

# Meadowlark

A JOURNAL OF ILLINOIS BIRDS

Volume 1, Number 4

1992



# Illinois Ornithological Society



The Illinois Ornithological Society gratefully acknowledges the following contributors, founders, and affiliates for their generous donations and support.

## **AFFILIATES**

Du Page Birding Club  
Evanston North Shore Bird Club

## **FOUNDERS/SUPPORTERS - \$100 or more**

Charlotte Adelman and Bernard Schwartz  
Mrs. C. H. Banzhaf  
Rex J. Bates  
Roger and Nancy Coons  
Mr. & Mrs. Thomas Donnelley II  
Betsy Fikejs  
R. David Johnson  
Dr. David Littman  
Sebastian Patti  
The Pollock Family  
Karen Rodemaker  
Dr. & Mrs. Smigiel  
Muriel Smith  
Dr. David Willard  
Gary and Linda Zachman

## **CONTRIBUTORS - \$50**

Erica and Hartmann Friederici  
Peter Friederici  
Philip Haebler  
Parker Hall  
Mary Anne Harrison  
Heller Nature Center  
Gary and Nancy Herren  
Steve Hossler  
Roger Hotham  
Barrie L. Hunt  
Lee and Lynda Johnson  
Vernon La Via  
Francis Lenski  
P. Clifford Miller  
North Central Illinois Ornithological Society  
Joseph Jr. and Marlene Nowak  
Jack Pomatto  
John E. & Caryl M. Sweeney  
Barbara and Craig Thayer

## **Publisher**

Illinois Ornithological Society

## **President**

Eric Walters

## **Vice-President**

David B. Johnson

## **Recording Secretary/Treasurer**

Michael Hogg

## **Chief Editor**

Sheryl De Vore

## **Board of Directors**

Laurence C. Binford, Ph.D.

Robert Chapel

Todd Fink

Ron Goetz

David B. Johnson

W. Douglas Robinson

Eric Walters

David Willard, Ph.D.

## **Assistant Chief Editor**

David B. Johnson

## **Associate Editors**

Judy De Neal

Chuck Hutchcraft

## **Art/Graphics-Layout Editor**

Walter Marcisz

## **Staff Illustrators**

David Athans

Leslie A. DeCoursey

Denis Kania

## **Editorial Advisor**

David Willard, Ph.D.

Field Museum of Natural History,  
Chicago

## **Proofreader**

Laurel Ann Kaiser

## **Membership Secretary**

Karen Rodemaker

## **Field Trip Chairperson**

Sue Friscia

## **Printing**

Ed Barresi, Reprox

4667 McRee

St. Louis, Missouri 63110.

## **LETTER FROM THE EDITOR**

A few days before the 1991 spring bird count, a birder discovered a Pileated Woodpecker near the Des Plaines River backwaters at Ryerson Conservation Area in Deerfield. Pileated Woodpeckers rarely occur in northern Illinois. Dave Johnson and I were covering Ryerson for the spring bird count. Dare we hope that the bird would stay there long enough for us to count it?

The day of the count we walked the backwaters of the river, quietly listening, hoping, wondering. Nothing. We scouted the rest of the woods racking up warblers, tanagers, grosbeaks, and sparrows, all the while thinking of the Pileated Woodpecker.

About noontime, we returned to the river backwater area.

This time, we heard it - the unmistakably low, andante pecking. "Do you think?" we asked simultaneously. YES! We heard it. We saw it. We counted it.

Such vivid memories no doubt inspire us to call our county compilers each year to participate in the annual spring bird count. In this issue, we feature a report on the 1992 spring bird count by Michael J. Baum. We hope it will bring back memories from last year and inspire hope for what might be this year.

*Sheryl DeVore*

# Meadowlark

*A Journal of Illinois Birds*

Volume 1, Number 4 - 1992

ISSN 1065-2043

## PRESIDENT'S MESSAGE

Spring has arrived and you are no doubt polishing your binoculars and getting ready to enjoy the excitement of migration. While you are out scouting warblers, IOS is busy organizing more exciting opportunities for you.

We have already scheduled the first annual statewide fall hawk watch which will afford us a snapshot view of hawk movement within Illinois. We are also organizing a breeding season count that will provide valuable nesting information for researchers.

Perhaps you are excited about a birding project that you would like to share with other birders. Or perhaps you would like to help in some of our projects. Either way, let us know. The need for volunteers continues and we welcome your efforts.

*Eric Walters*

## ABOUT OUR COVER ILLUSTRATOR

David Athans drew the Sprague's Pipit, a bird of the short-grass prairie which occurred in Illinois during the spring of 1992.

Athans, a member of the Chicago Ornithological Society, has exhibited his drawings at the Midwest Birding Symposium and also sells his works through Wild Birds Unlimited. Athans' interest in art was rekindled as a result of his birding experiences. He accepts commissioned work and can be contacted at 708/388-0285.

## Articles

**122** *Bird Lady of Woodstock -Rehabilitator gives quality care to injured birds*  
- Chuck Hutchcraft

**125** *Statewide 1992 Spring Bird Count Report*  
- Michael J. Baum

## Departments

**132** *Bird Finding Guide -Yellow-throated Warbler in Winnebago County*  
- Dan Williams

**135** *Feeder Station - How to participate in the Spring Feeder Count*  
- Sue Friscia

**136** *Seasonal Highlights*

**140** *Avian Annals -An historical look at birding in Illinois*  
- Eric Walters

**141** *Field Notes -Spring 1992*  
- Eric Walters

**159** *Index - Volume 1*

# BIRD LADY OF WOODSTOCK

## *Rehabilitator gives quality care to injured birds*

*by Chuck Hutchcraft*

The couple found a Canada Goose with an injured wing along a street near their house. They thought it may have been shot. They wrapped its wing in a bandage and brought it to Andrea Kane.

In the kitchen of her Woodstock farmhouse, Kane unwrapped the bandage and examined the bird. Her strong, long-fingered hands gently explored the wing's surface while the bird remained still, quiet.

These hands have held thousands of birds, injured or sick, and nursed them back to healthy flying machines. "Does it feel any pain?" asked the woman as Kane examined the goose. "They handle pain much differently than you or I," said Kane as her flatcoat retriever, Pepper, wandered in, lending her nose to the effort. "One nice thing about having a dog around is that it takes the bird's mind off what you're doing," she said. "And one of the nice things about having cats around is it takes the bird's mind off the dog," Kane added as her cats sauntered by.

"It feels like a long fracture," Kane said after several more minutes of examination. She rewound the bandage to hold the wing tightly against the bird. "We'll take an X-ray and if the doctor feels she is a good candidate for surgery, we'll see what happens." Kane lifted the large bird into a cardboard box near the wood stove, then discovered that the goose had left a deposit on the floor. Kane wiped it up and continued. She has long ago stopped counting the mishaps on her kitchen floor.

But she religiously counts the birds she has worked to rehabilitate for sixteen years. Licensed by the U.S. Wildlife Service and the Illinois Department of Conservation, Kane is required to keep detailed records of the birds she receives and what happens to them under her care.

The goose was Kane's 450th patient in 1992.

On that fall afternoon, the light faded early over the fields surrounding Kane's framed farmhouse. The busy season for the Florence Nightingale of the bird world was winding down, but the calls kept coming. The phone rang several times in an hour. The callers said they had injured birds and asked for directions to Kane's

home.

They come from a considerable distance, after having gone to great lengths, making sixteen phone calls or more, "taking hours out of their day," to track down the Bird Lady, to bring her the ailing birds they find in their backyards, along road sides, in fields, or fallen out of trees. "That's a lot of caring don't you think?" said Kane.

One might say the same of Kane. To be a skilled rehabilitator requires textbook knowledge, common sense, years of experience, an uncanny understanding of birds, and a strong sense of commitment and caring.

Kane is a city girl. Her husband, Charlie, hails from down state Winona near the Illinois River.



*Bird rehabilitator Andrea Kane cares for a Red-tailed Hawk near her Woodstock home. The hawk was imprinted on humans and can not be released into the wild. Photo by Paul Dawson.*

Twenty years ago Kane's parents moved to Woodstock. She and her husband followed, buying the house and six acres on McCauley Road.

"I was an active birder before I started rehabbing," said Kane. She started rehabbing as a part-time clerical employee for the McHenry County Conservation District. She and another employee voluntarily began caring for injured animals people brought to the district.

The birds needed constant attention so each night Kane would take the birds home and then bring them back in the morning. Eventually Kane decided she wanted to rehab on her own.

As migration season begins until the last brood of the summer is hatched, Kane tends the injured and the sick in a whirlwind of daylight hours melding into night. "Baby season is the most intense," said Kane. Juvenile song birds must be fed every twenty minutes, the period between feedings expanding as the birds get older.

Volunteers share the load. Nevertheless, it is still a long grind. Kane often tends more than 100 young birds at one time during the late spring and summer months. "We go from morning till night."

Her reward? "It feels good to watch something fly away. When I started rehabbing I never thought of the fact that birds were flying machines. When I was a birder I thought flight was irritating."

Kane's work also has reaffirmed her faith in the human race. "I am Pollyannic. I really think people care. I'm very fortunate in having a job that lets me meet them."

A Pollyanna she might be, but naive she is not. Not everyone is as sensitive as she is. "People control the fate of wildlife," said Kane. "If you want to help wildlife you have to change people's attitudes."

She furthers that effort through the tours and talks she gives. Each year, groups of school children and adults come to hear the Bird Lady



Andrea Kane gives a crow its breakfast. Photo by Paul Dawson.

talk about her work and birds.

Kane might show them one of the several homemade cages designed uniquely for housing wild injured birds. The cage ends are wooden, the tops rounded. Instead

---

*'Andrea Kane often tends more than 100 young birds at one time during the late spring and summer. Her reward? It feels good to watch something fly away, she said.'*

---

of wire, the cages have a mesh over the top. "Wild birds don't understand wire," said Kane. With wire, the birds can hurt themselves compounding their injuries. The cages are also portable, so when

ever the bird must be taken to a veterinarian, "we can throw a towel over the cage and off we go."

Kane handles the birds as little as possible "which probably accounts for our success rate." To determine the success rate, Kane records the total number of birds received. From that number she subtracts the birds that die on arrival and the birds that must be euthanized. In this business, Kane said, it is important to realize that "nature needs death as well as life."

Her success rate is about 66 percent. "From what I understand, that's pretty darned good," said Kane walking outside to where several aviaries were located behind the house. One is for young song birds, another for adults, and another for raptors. The adult songbird aviary provides limited vision to the outside world to keep the birds from becoming upset. "Birds' eyes are their most important sense," she said. "What they can't see won't hurt them."

A fenced-in area with low buildings houses waterfowl. A sign on one of the low buildings reads:

"Drake Hotel."

During a recent tour of her facilities, one female cardinal recuperated in the adult song bird aviary while two Red-tailed Hawks and a kestrel sat in the raptor facilities.

In the house, Kane had more birds - "We wouldn't want to run out of birds" - a Blue Jay, screech owl, a Bay-breasted Warbler and a Yellow-bellied Sapsucker. The warbler was recuperating from a back injury. "He probably flew into a window," said Kane. The sapsucker was being treated for what Kane calls "sapsucker syndrome. Everything works but he can't stand up and fly".

Meanwhile, the owl stared sternly from its perch in what used to be the front porch and the Blue Jay cocked its head, studying a visitor. Kane said the Blue Jay's infamous reputation is undeserved. "They're entertaining, they're funny," she said. "Smack in the middle of the busiest time of the year they make me laugh."

Kane said her birding experiences - from observing the common Blue Jays to the rare Peregrine Falcons - have helped her care for injured birds. She knows what a bird faces in the wild, and that helps her determine whether what she does as a rehabber will help or thwart the bird's ability to survive once it is released.

But she also "had to have a whole different set of knowledge to be a rehabber. It's much more than recognizing a bird and its song." A local veterinarian has agreed to work with the Bird Lady, although his only background on birds was a three-hour course on poultry at veterinarian school. "We got an ornithology text and went from there," said Kane.

"He took the time to teach me some things I would have never researched. He does all the surgery and prescribes the medication." To be a bird rehabber requires intimate daily contact. The metabolic rate for birds is three times that of mammals. Kane said she

can not fail to recognize even the smallest clue, such as a bird not eating at one scheduled feeding.

Kane must also recognize when or whether a bird can be returned to the wild. Sometimes, they never are. For instance, she has not been able to release the Red-tailed Hawk. It was likely injured and lived among humans during its imprinting period, said Kane. At that time, a bird learns to associate with those with whom it is most familiar. The hawk came to think of itself as a human. As it recovered, the bird became able to survive in the wild. But the trouble would come during the mating season. The bird would select a human as a mate. One human only. Should any other human enter what the hawk considered its territory, the hawk would be compelled to defend the human.

That is why Kane so strongly lectures on imprinting. "To take a just-hatched bird and raise it all by yourself is not a kindness," said Kane. "You impede it for the rest of its life."

"Eighty percent of all birds

hatched in a year die in their first year. Half of the rest will die by the time they are two. It's very unlikely that an improperly imprinted bird will survive to sexual maturity," said Kane.

Her philosophizing ended as a couple walked toward her carrying a young mallard, a recent patient. A few days before Kane had taken the duck and its siblings to the couple's farm pond near Wayne, thirty miles south of Woodstock. But the couple noticed one of the ducks was cold and shivering.

Nestling the young duck against her stomach with one hand, Kane gently ran her fingers through its feathers. They seemed to lack oil which protects the duck from the cold and the dampness. Kane checked its preening gland which produces the oil. "He's got oil," she said, then checked its mouth. "The mouth is a little pale. Maybe I'll run a test to see if you have parasites," she said to the patient. The man and woman nodded and left, assured the duck was in skilled and compassionate hands.



*Andrea Kane patched the wing of this injured White-breasted Nuthatch. Photo by Paul Dawson.*

# Statewide 1992 Spring Bird Count

by Michael J. Baum

Many county compilers reported excellent species totals while others expressed disappointment after conducting the 21st annual Illinois Spring Bird Count on Saturday 9 May 1992. Karen Forcum of Shelby County said she was "disappointed in the numbers of each species - especially the warblers. We really had to search for the ones we got." Steve Tavender of Scott County noted with marvelous economy, "Beautiful day. Dry. No birds."

Other counters remarked on the good cross section of early and late species, but no one mentioned flocks of grounded transients, hawk flights, or flurries of sandpipers dropping out of the sky. This was a work-ethic day, a day a

dentist would appreciate, a day we went out and made extractions.

Observers from 95 Illinois counties found 257 different species, 8 short of the record and one better than 1991. No new species were added so the total number of species seen on spring bird counts in Illinois remains at 311.

## WEATHER CONDITIONS

Weather throughout the state was remarkably uniform. Lows of 39 degrees were posted in Henderson and Scott counties. Whiteside had a high of 87 degrees. Almost everyone else reported a range between 45 and 80 degrees, with full sun all day. No precipitation was recorded and most counties had

light breezes of 5 to 10 miles per hour with variable wind directions.

## OBSERVER TOTALS

There were 1,491 observers, 38 below 1990's benchmark. Parties spent 5,128 hours in the field. Coverage within four divided sections of the state was high. Twenty of 23 possible counties participated in area 1; 25 of 28 in area 2; 26 of 27 in area 3; and 24 of 24 in area 4 (Figure 1). Cook County had the most participants at 110. The four counties with the highest number of participants, Cook, Du Page, McHenry, and Will were the same as in previous years.

## RARITIES

Twenty-seven species occurred in only 1 county and 10 others in only 2 counties. A photographed male Lark Bunting was the second occurrence for the count. American White Pelican, Oldsquaw, and Ruffed Grouse were all third occurrences.

Additional rarities for this year include 5 King Rails in 3 counties, 7 Black-throated Blue Warblers in 5 counties, 4 Connecticut Warblers in 3 counties, 11 Clay-colored Sparrows in 4 counties, 6 Henslow's Sparrows in 3 counties, and 4 Harris' Sparrows in 3 counties.

## SPECIES MISSED

Fifteen species that have been seen on seven or more previous counts were missed this year. They include (with number of years seen in parentheses): Redhead (20 - first time missed); Surf Scoter



*One of the rarest finds on the 1992 Spring Bird Count was a King Rail. Five King Rails occurred in three counties. Photo by Joe B. Milosevich.*

(7); Peregrine Falcon (13); Yellow Rail (9); Piping Plover (10); Willet (19); Ruddy Turnstone (12); Sand-erling (20 - first time missed); White-rumped Sandpiper (18); Baird's Sandpiper (15); Franklin's Gull (12); Bewick's Wren (18); Swainson's Warbler (13); Red Crossbill (10), Evening Grosbeak (14).

### HIGH COUNTS

As recently as 1985, only 6 counties reported species totals of 140 or more. A steady increase has occurred since then, and in 1992, 18 counties reached this level (Table 1). For the 3rd straight year, Cook County report-

*'This was a work-ethic day, a day a dentist would appreciate, a day we went out and made extractions.'*

ed the most species (195) including 34 warblers and 17 waterfowl. Lake reported the second highest number with 186, including 5 gulls, 15 waterfowl, 15 shorebirds, and 27 warblers. La Salle and Will tied at 167. La Salle reported 15 shorebirds, 25 warblers, and 13 sparrows. Will reported 26 warblers and 14 sparrows.

Other noteworthy counts included: 9 herons, all 7 vireos, and 34 warblers in Jackson; 14 shorebirds and 29 warblers in Du Page; 34 warblers in Union; 9 flycatchers and all 7 vireos in Champaign; all 7 vireos in Cole and Franklin; 30 warblers in Johnson; 27 warblers in Knox; 15 shorebirds, all 7 vireos, and 27 warblers in Macon; 8 herons and 9 flycatchers in Madison; 13 sparrows in McDonough; 27

TABLE 1 - COUNTY STATISTICS

County	Total Species	Total Individuals	Number of Observers	Hours Walked/ Driven	Compiler
Adams	122	9,130	17	78	Al Dierkes
Alexander	127	3,205	10	31	Ida Domazlicky
Bond	79	2,830	5	15	Charley Marbut
Boone*	124	10,982	50	114	Arlene Brei
Bureau	67	2,530	7	17	Steven Shipp
Calhoun	122	4,438	8	48	Wida Sutherland
Carroll+	149	5,651	9	43	Jeffrey Baughman
Cass	120	1,747	1	10	Robert L. Randall
Champaign* +	151	10,033	36	124	Beth Chato
Christian	123	3,251	5	28	Clark Olson
Clark	67	2,038	17	31	Donna Clem
Clinton	137	3,396	12	16	Roger Hayes
Coles	131	3,607	14	31	Barrie L. Hunt
Cook* +	195	44,481	110	318	Eric Walters
Crawford*	123	9,242	28	95	David Schuur
Cumberland	110	3,617	5	24	Larry Thorsen
De Kalb	93	2,510	5	27	Darrell Shambaugh
De Witt	109	2,748	10	43	Lynette Miller-Ishmael
Douglas	101	3,438	6	30	Robert Szafoni
Du Page* +	160	25,165	83	249	Dick Young
Edgar	106	6,758	18	58	Raymond Steidl
Edwards	101	5,918	14	43	Elaine Michels
Effingham	107	2,512	13	28	Ted Funk
Fayette	105	2,064	6	27	A.W. Jones
Ford	88	909	3	22	Larry David
Franklin	126	1,144	1	14	Robert Danley
Fulton	115	7,253	13	46	V. Humphries
Gallatin	110	802	1	15	Ron Bradley
Green	103	1,322	4	14	Helen Wuestenfeld
Grundy	85	1,636	12	30	Bob Crane
Hamilton	111	3,159	5	35	Hazel Clark
Hancock +	141	7,502	13	61	Barb Roberts
Henderson	120	1,766	5	25	Chuck Leib
Henry	104	2,143	4	16	Randy Nyboer
Iroquois	96	3,653	10	39	Robert Dannohl
Jackson +	165	7,106	7	42	J. Paul Biggers
Jasper	91	792	4	10	Scott Simpson
Jefferson	89	1,046	3	9	Florence Glass
Jersey	116	2,537	9	22	Gilbert Ives
Jo Daviess	111	7,093	18	54	Laura Dufford
Johnson	136	4,588	12	45	David Enstrom
Kane*	136	13,447	32	126	Bob Montgomery
Kankakee	101	3,659	18	34	Etta Mae Aubertin
Kendall	112	4,419	18	46	Maryann Gossmann
Knox +	143	7,281	19	94	Michael Baum
Lake* +	186	14,368	36	198	Danny Diaz
La Salle* +	167	37,256	31	137	John McKee
Lawrence	95	1,129	2	16	Jim Garner
Lee	124	3,989	16	81	John Bivins
Livingston	109	3,684	13	74	Joe Jobst
Logan*	92	3,970	20	55	Margaret Lanterman
McDonough* +	144	18,200	78	261	Alice Krauser
McHenry* +	140	15,637	49	164	David Frey
McLean	112	3,882	8	31	Dale Birkenholz
Macon +	147	4,460	9	31	Richard Palmer
Macoupin	97	2,185	3	20	Mike Sweet
Madison	133	5,278	14	45	John McCall
Marion	81	1,634	5	19	Joe Merklebach
Marshall	62	1,989	3	13	Mery Hill
Mason	131	6,466	10	45	Richard Bjorklund
Massac	105	2,206	3	31	Donald Bennett
Menard	102	1,956	5	24	Kenneth Lockhart
Mercer	135	7,020	6	29	Bill Bertrand
Montgomery	95	1,500	3	24	Mark Phipps
Moultrie	124	2,554	7	21	Robert Cottingham
Ogle*	109	3,785	26	47	Mark Swan
Peoria	136	6,619	19	81	Eleanor Voeste
Perry	109	3,082	16	44	Joey Vancil
Platt	108	2,640	15	41	Elaine Regehr
Pike	137	7,861	18	77	Jim Funk
Pope	85	395	2	13	Dan Spivey
Pulaski	85	972	1	9	Bob Lindsay
Putnam	53	353	3	11	Darcia Ferrari
Randolph	112	1,882	5	13	David Gross
Rock Island	133	5,240	11	45	Tim Murphy
St. Clair +	140	5,542	10	53	Richard Call
Saline	109	1,732	12	28	Kathy Phelps
Sangamon +	145	2,214	3	24	H. David Bohlen
Schuyler*	90	4,750	74	90	Ruby Bryant
Scott	100	2,238	3	18	Steve Tavender
Shelby	126	2,275	5	31	Karen Forcum
Stark	59	818	2	11	Mary Hartley
Stephenson*	110	4,205	23	40	George Visel
Tazewell	111	4,929	10	40	Louise Endres
Union +	159	9,192	10	45	Vernon M. Kleen
Vermilion +	143	8,468	19	71	Marilyn Campbell
Wabash*	95	5,177	41	115	Sharon Giles
Warren	79	1,500	13	23	Lynn Schoonover
Washington	82	627	2	10	Martin Kemper
White	67	982	6	16	Doris Williams
Whiteside	126	2,837	19	45	Larry Jones
Will* +	167	26,813	56	257	Aura Duke

\* Denotes county with 20 or more participants  
+ Denotes county with 140 or more species





Ruby-throated Hummingbird 50 in Schuyler (43 Schuyler, 1986); Acadian Flycatcher 147 in Johnson (123 Union, 1991); Least Flycatcher 508 in 73 counties (485, 1986); Fish Crow 77 (70, 1990); Tufted Titmouse 3,253 (3,077, 1990) with 357 in Union (247 Union, 1991); Blue-gray Gnatcatcher 2,012 in 82 counties (1,812, 1991); Warbling Vireo 1,493 (1,473, 1986); Yellow Warbler 2,536 (2,001, 1991) with 386 in DuPage (304 Cook, 1987); Cerulean Warbler 161 (145, 1986) with 56 in Carroll (52 Carroll, 1986); Northern Cardinal 11,427 (10,770, 1991); Eastern Meadowlark 7,720 (7,608, 1991) with 625 in McDonough (613 St. Clair, 1981); Brown-headed Cowbird 11,831 (11,259, 1990); House Finch 3,607 (2,381, 1991) with 425 in Cook (273 Vermilion, 1990).

#### SPECIES OF SPECIAL INTEREST

Canada Geese continue to increase with a record 10,643 (10,020, 1991). Fourteen Ospreys were found in 12 counties. A record 23 Bald Eagles were reported from 13 counties. Wild Turkeys also established a record with 269 from 51 counties (36 counties was the previous high). Upland Sandpipers were down from their highest years with only 34 in 14 counties; 95 were found in 1984, and 21 counties reported them in 1986.

Carolina Wren broke last year's (then) record high by 458 with a whopping 1,343 in 84 counties. In 1985, after a severe winter, participants tallied only 176 Carolina Wrens in 39 counties. In 1991, Union alone tallied 203. What will the next severe winter do to this species?

Eastern Bluebirds, Northern Mockingbirds, and Loggerhead Shrikes seem to be holding their own with totals only slightly below their previous highs.

TABLE 2 - SPECIES REPORTED AND HIGH COUNTS

Species	Number of Counties	Total	High County	Total
Common Loon	12	13	Pike	2
Pied-billed Grebe	38	194	Cook	40
Horned Grebe	1	2	Cook	2
Eared Grebe	1	2	Cook	2+
American White Pelican	2	16*	Carroll	14*
Double-crested Cormorant	40	2,444*	Will	774*
American Bittern	11	18	Cass	3
Least Bittern	3	4	Jackson	2
Great Blue Heron	94	2,848	Mason	303
Great Egret	48	985*	Will	365*
Snowy Egret	2	9	Madison	8*
Little Blue Heron	21	136	Pulaski	35
Cattle Egret	16	410	Union	179
Green-backed Heron	81	669*	Cook	49
Black-crowned Night Heron	18	1,627*	Cook	1,128*
Yellow-crowned Night Heron	11	45*	Jackson	20*
Tundra Swan	3*	3*	Champ., Whit., Winn.	1
Mute Swan	11	65	Lake	22
Greater White-fronted Goose	1	1	Madison	1
Snow Goose	2	2	Kank., Winn.	1
Canada Goose	85	10,643*	DuPage	1,914
Wood Duck	91	3,035	Will	173
Green-winged Teal	13	44	Carr., Lake, Winn.	7
American Black Duck	6	16	De Witt	6
Mallard	89	6,921	DuPage	828
Northern Pintail	1	4	Vermilion	4
Blue-winged Teal	67	761	Cook	76
Northern Shoveler	23	83	Fayette	18
Gadwall	13	80	Carroll	38*
American Wigeon	5	7	Cook, LaSa.	2
Canvasback	1	1	Hancock	1
Ring-necked Duck	13	40	Cook	11
Greater Scaup	1	3	Cook	3
Lesser Scaup	21	91	Cook	48
Oldsquaw	1+	1	De Witt	1
Common Goldeneye	2	2	Taze, Whit.	1
Bufflehead	6	18	Cook	12
Hooded Merganser	10	29	Fult., Gall.	6
Common Merganser	2	8	La Salle	7
Red-breasted Merganser	10	65	Cook	33
Ruddy Duck	15	177	Cook	99
Black Vulture	2	12	Johnson	9
Turkey Vulture	89+	1,592	Pike	141*
Osprey	12	14	McHe., Pike	2
Mississippi Kite	5*	34*	Union	19
Bald Eagle	13*	23*	Fayette	4
Northern Harrier	27	46	Will	6
Sharp-shinned Hawk	31*	46	Lake	5
Cooper's Hawk	24	52	Winnebago	8*
Red-shouldered Hawk	23	49	Jackson	12*
Broad-winged Hawk	27	62	Cook	12
Swainson's Hawk	1	3+	Kane	3*
Red-tailed Hawk	94	1,087	Will	82
Rough-legged Hawk	1	1	Knox	1
American Kestrel	75	410	Will	33
Merlin	2	2	Cook, Winn.	1+
Gray Partridge	7	25	Lee	14
Ring-necked Pheasant	59	1,481	Champaign	121
Ruffed Grouse	1+	1	Union	1
Greater Prairie Chicken	1	6	Jasper	6
Wild Turkey	51*	269*	Jo Daviess	37
Northern Bobwhite	74	1,623	Stephenson	152
King Rail	3	5	McHe., Will	2
Virginia Rail	16	60	Lake	22
Sora	43	301	Lake	62
Common Moorhen	6	16	Cook	9
American Coot	47	516	Cook	148
Sandhill Crane	5	29+	Lake	12
Black-bellied Plover	3	4	Union	2
Lesser Golden Plover	32	2,641	Macon	700
Semi-palmated Plover	36	226	Fulton	29
Killdeer	95	3,354	Will	254
Greater Yellowlegs	40	185	Faye., Pula.	16
Lesser Yellowlegs	56	304	Winnebago	22
Solitary Sandpiper	63	321	DuPage	40
Spotted Sandpiper	72	478	Lake	44
Upland Sandpiper	14	34	Jasp., Will	5
Hudsonian Godwit	1	1	Sangamon	1
Marbled Godwit	1	1	Jackson	1
Semipalmated Sandpiper	28	142	Fulton	15
Western Sandpiper	1	2	Lake	2
Least Sandpiper	45	704	Macon	70
Pectoral Sandpiper	50	1,405	Bond	529
Dunlin	11	50	Boone	9
Stilt Sandpiper	1	1	Cook	1
Short-billed Dowitcher	14	33	Fult., Ogle, Winn.	4
Long-billed Dowitcher	1	1	Macon	1
Common Snipe	28	65	Kane	8
American Woodcock	38	120	Lake	23

**TABLE 2 - SPECIES REPORTED & HIGH COUNTS, CONTINUED**

Species	Number of Counties	Total	High County	Total
Wilson's Phalarope	1	1	Lake	1
Laughing Gull	1	1	Lake	1
Bonaparte's Gull	7	359	Lake	343
Ring-billed Gull	60*	14,836*	Cook	12,809*
Herring Gull	16	344	Cook	137
Thayer's Gull	1+	1	Lake	1
Caspian Tern	12	52	Cook	17
Common Tern	12	323	Lake	193
Forster's Tern	14	260	Lake	226
Black Tern	13	70	Lake	26
Rock Dove	91	6,209	Cook	1,374
Mourning Dove	95	11,377	Will	823
Black-billed Cuckoo	30	50	Jack., Shel.	4
Yellow-billed Cuckoo	53	170	Jackson	31
Common Barn Owl	1+	2+	Pulaski	2+
Eastern Screech Owl	44	120	Union	15
Great Horned Owl	62	226	Lake	14
Barred Owl	62	362*	Knox	31
Short-eared Owl	1	1	Shelby	1
Common Nighthawk	57	252	Jackson	27
Chuck-will's-widow	13	35	Johnson	12
Whip-poor-will	62	562	Union	40
Chimney Swift	94	7,798	Edgar	980
Ruby-throated Hummingbird	62	437	Schuyler	50*
Belted Kingfisher	81	482	Cook	33
Red-headed Woodpecker	94	3,636	McDonough	217
Red-bellied Woodpecker	93	2,210*	Union	115
Yellow-bellied Sapsucker	21	53	McDonough	10
Downy Woodpecker	92	2,173	Cook	166
Hairy Woodpecker	83	389	McHenry	22
Northern Flicker	94	2,975	Cook	308
Pileated Woodpecker	55*	223	Union	39
Olive-sided Flycatcher	17	22	Fult., Henr., Lee, Sang.	2
Eastern Wood Pewee	82	860	Union	126
Yellow-bellied Flycatcher	1	1	Champaign	1
Acadian Flycatcher	38*	453	Johnson	147*
Alder Flycatcher	2	2	Sang., Winn.	1
Willow Flycatcher	22*	64*	Cook	18*
Least Flycatcher	73*	508*	Cook	56
Eastern Phoebe	85	833*	McDonough	50
Great Crested Flycatcher	87	1,545	Union	126
Eastern Kingbird	95	2,266	Pike	117
Horned Lark	91	4,904	Vermilion	371
Purple Martin	91	2,694	Pike	138
Tree Swallow	81	3,782	Cook	430
Northern Rough-winged Swallow	86	2,513	La Salle	239
Bank Swallow	58	2,110	Knox	304
Blue Jay	95	11,711	Cook	1,109
American Crow	95	9,400	Cook	864
Fish Crow	6	77*	Jackson	41
Black-capped Chickadee	67	4,144	Cook	460
Carolina Chickadee	33	673	Crawford	65
Tufted Titmouse	89	3,253*	Union	357*
Red-breasted Nuthatch	11	23	Lake	4
White-breasted Nuthatch	90	1,519	McDonough	81
Brown Creeper	28	48	LaSa., McDo., Steph.	4
Carolina Wren	84*	1,343*	Johnson	165
House Wren	91	5,478*	Winnebago	379
Winter Wren	4	5	Will	2
Sedge Wren	13	20	Johnson	5
Marsh Wren	22	64	Cook	16
Golden-crowned Kinglet	2	4	Cook, Lake	2
Ruby-crowned Kinglet	54	559	Cook	134
Blue-gray Gnatcatcher	82*	2,012*	Union	201
Eastern Bluebird	94	2,629	Crawford	172
Veery	58	256	Union	63
Gray-cheeked Thrush	58	342	Union	85
Swainson's Thrush	71	937	Jackson	217
Hermit Thrush	34	109	Cook	17
Wood Thrush	86	980	Union	76
American Robin	95	34,874	Cook	2,269
Gray Catbird	95	3,689	Will	257
Northern Mockingbird	72	865*	Edwards	99*
Brown Thrasher	95	3,749	McDonough	257
American Pipit	8	18	Crawford	5
Cedar Waxwing	60	1,430	Union	202
Loggerhead Shrike	37	162	Marion	15
European Starling	95	37,736*	Will	3,312
White-eyed Vireo	62	498	Union	98
Bell's Vireo	28*	62*	Montgomery	9
Solitary Vireo	36	90	Cook	13
Yellow-throated Vireo	59	396*	Union	48
Warbling Vireo	84+	1,493*	Cook	78+
Philadelphia Vireo	25	75*	Lake	15
Red-eyed Vireo	79	1,069	Union	240
Blue-winged Warbler	35	186	Cook	31
Golden-winged Warbler	43	145	Union	18
Tennessee Warbler	77	1,694	Union	255
Orange-crowned Warbler	18	64	Cook	26

**MOST COMMON SPECIES**

The 20 most common species nearly always remain the same (Table 3). House Wren was the only new species to join the group in 1992. The 1st 5 continue in the same order every year. Ring-billed Gull jumped to 6th position after a record year in 1991 when it was 12th. Rock Dove returned to the list after a 3 year absence. Six of these common species reached their record highs this count and the Song Sparrow missed it by only 3 birds. Judging from its steady increase, and this year's 3,607 count, the House Finch may be destined to join this list soon.

**LINGERING SPECIES**

Species often gone from Illinois by the spring count include: 13 Common Loons in 12 counties; 3 Tundra Swans in 3 counties (Champaign, Whiteside, Winnebago); 1 Greater White-fronted Goose (Madison); 2 Snow Geese (Kane, Winnebago); 1 Northern Pintail; 1 Canvasback (Hancock); 3 Greater Scaup (Cook); 1 Oldsquaw (De Witt); 2 Common Goldeneyes (Whiteside, Tazewell); 18 Buffleheads (Cook, Lake, McHenry, Ogle, Stephenson, Winnebago); 8 Common Mergansers (Henderson, La Salle); 46 Northern Harriers in 27 counties; 1 Rough-legged Hawk (Knox); 1 Long-billed Dowitcher (Macon); Herring Gulls in 16 counties; 23 Red-breasted Nuthatches in 11 counties (including Champaign, Cook, Lake, Lee, Livingston, McHenry, Moultrie, Piatt, St. Clair, Whiteside, Will); 5 Winter Wrens (Cook, Lake, Vermilion, Will); 4 Golden-crowned Kinglets (Lake, Cook); 4 American Tree Sparrows (Jo Daviess, Will); 1 Le Conte's Sparrow (Iroquois); 9 Fox Sparrows (Cook, La Salle, McDonough, Tazewell, Will); 8 Dark-eyed Juncos (Cook, Du Page, Lake, La Salle, Will, Winnebago); 50 Lapland Longspurs (Winnebago); 1 Rusty Blackbird (Jo Daviess); 44 Pine

Siskins (Boone, Champaign, Du Page, Jersey, Lake, Livingston, Logan, McDonough, McHenry, Macon, St. Clair, Sangamon, Shelby.)

### LATE ARRIVALS

Species that often do not arrive until after the spring count include: 4 Least Bitterns (Jackson, Vermilion, and Du Page), 4 Black-bellied Plovers (Jo Daviess, Lake, Union); 2 Western Sandpipers (Lake); 1 Stilt Sandpiper (Cook); 70 Black Terns (including Cook, De Kalb, Du Page, Hamilton, Jasper, Lake, La Salle, McDonough, McHenry, Pike, Putnam, Warren, Will) ; 170 Black-billed Cuckoos in 30 counties, but in the north only in Cook, Du Page, Lake and McHenry; 170 Yellow-billed Cuckoos in 53 counties; 252 Common Nighthawks in 57 counties; 22 Olive-sided Flycatchers in 17 counties (including Adams, Cass, Champaign, Clinton, Cook, Du Page, Fulton, Henry, Kendall, Lake, La Salle, Lee, Madison, Perry, St. Clair, Sangamon, Winnebago); Eastern Wood Pewee in 82 counties; 1 Yellow-bellied Flycatcher (Champaign); 1 Alder Flycatcher each in Sangamon and Winnebago; 64 Willow Flycatchers (including Carroll, Cook, Du Page, Lake); 20 Sedge Wrens in 13 counties (including Calhoun, Champaign, Cook, Edwards, Franklin, Jo Daviess, Johnson, Knox, Lake, Lee, Macon, Mercer, Sangamon); 62 Bell's Vireos in 28 counties (including Kane, McHenry): a record 75 Philadelphia Vireos in 25 counties (in the north only in Cook, Du Page, Kane, Lake, McHenry); Cape May Warbler in 21 counties (including six northern); 86 Bay-breasted Warblers in 39 counties (including five northern); 134 Blackpoll Warblers in 41 counties (including seven northern); 4 Connecticut Warblers (Cook, Du Page, Jackson); 21 Mourning Warblers (including Carroll, Cass, Champaign, Cook, Du Page, Jackson, Jersey, Lake, Union, Whiteside,

TABLE 2 - SPECIES REPORTED & HIGH COUNTS, CONTINUED

Species	Number of Counties	Total	High County	Total
Nashville Warbler	72	1,524	Cook	238
Northern Parula	54	442	Johnson	75
Yellow Warbler	78	2,536*	Du Page	386*
Chestnut-sided Warbler	61	370	Union	51
Magnolia Warbler	64	365	Cook	35
Cape May Warbler	21	55	Cook, DuPa.	8
Black-throated Blue Warbler	5	7	Cook, Kank.	2
Yellow-rumped Warbler	88	3,365	Cook	350
Black-throated Green Warbler	70	772	Cook	105
Blackburnian Warbler	57	265	Cook	26
Yellow-throated Warbler	29	112	Union	31
Pine Warbler	14	51	Jackson	11
Prairie Warbler	12	53	Johnson	22
Palm Warbler	76	998	Iroquois	100
Bay-breasted Warbler	39	86	Coles	9
Blackpoll Warbler	41	134	Alexander	29
Cerulean Warbler	38	161*	Carroll	56*
Black and White Warbler	69	514	Cook	56
American Redstart	65	589	Union	100
Prothonotary Warbler	56	395	Union	83
Worm-eating Warbler	15	100	Union	59
Ovenbird	70	510	Union	55
Northern Waterthrush	58	499	Cook	64
Louisiana Waterthrush	38	174	Union	41
Kentucky Warbler	44	361	Union	121
Connecticut Warbler	3	4	Cook	2
Mourning Warbler	11	21	Cook	5
Common Yellowthroat	93	3,991	Cook, Will	200
Hooded Warbler	15	34	Union	11
Wilson's Warbler	45	148	Cook	25
Canada Warbler	11	14	DuPa., Jack., Unio.	2
Yellow-breasted Chat	59	249	Jackson	45
Summer Tanager	33	200	Union	65
Scarlet Tanager	74	487	Union	56
Northern Cardinal	94	11,427*	Cook	649
Rose-breasted Grosbeak	92	2,238	Union	119
Blue Grosbeak	16	41	Union	7
Indigo Bunting	95	4,856	Union	478
Dickcissel	74	1,448	Pike	133
Rufous-sided Towhee	89	1,704	Will	110
American Tree Sparrow	2	4	Jo Daviess	3
Chipping Sparrow	92	3,955	McDonough	304
Clay-colored Sparrow	4	11	Cook	6+
Field Sparrow	94	3,399	McDonough	170
Vesper Sparrow	47	350	Mercer	48
Lark Sparrow	28	169	Mercer	27
Lark Bunting(second record)	1+	1+	Mercer	1+
Savannah Sparrow	59	581	Lake	64
Grasshopper Sparrow	71+	517	Mason	49
Henslow's Sparrow	3	6	Union	3
Le Conte's Sparrow	1	1	Iroquois	1
Fox Sparrow	5	9	McDonough	3
Song Sparrow	94	6,216	Du Page	518
Lincoln's Sparrow	29	125	Cook	26
Swamp Sparrow	64	808	Lake	115
White-throated Sparrow	92	3,892	Cook	449
White-crowned Sparrow	92	2,992	Cook	389
Harris' Sparrow	3	4	McDonough	2
Dark-eyed Junco	6	8	Lake, Will	2
Lapland Longspur	1	50	Winnebago	50
Bobolink	64	1,440	Jersey	162
Red-winged Blackbird	95	56,814	Du Page	4,286
Eastern Meadowlark	95	7,720*	McDonough	625*
Western Meadowlark	26	159	Stephenson	19
Yellow-headed Blackbird	12	161	Lake	56
Rusty Blackbird	1	1	Jo Daviess	1
Brewer's Blackbird	1	1	Lake	1
Common Grackle	93	40,050	Will	2,600
Brown-headed Cowbird	94	11,831*	McDonough	615
Orchard Oriole	75	557	Jackson	61
Northern Oriole	95	4,699	Cook	273
Purple Finch	42	321	Schuyler	33
House Finch	89	3,607*	Cook	425*
Pine Siskin	13	44	DuPa., McDo.,	7
American Goldfinch	92	11,881	Schuyler	642
House Sparrow	95	31,369	McDonough	1,960
Eurasian Tree Sparrow	24	381	Schuyler	78

Total Number of Species: 257

Total Number of Individuals: 505,308 (excluding unidentified birds)

\* Denotes new record

+ Denotes tied record

TABLE 3  
TWENTY MOST COMMON SPECIES

Species	Count	Highest Count	Number Years in Top 20
Red-winged Blackbird	56,814	63,947 (1991)	21
Common Grackle	40,050	59,264 (1974)	21
European Starling	37,736*	37,736 (1992)	21
American Robin	34,874	37,149 (1989)	21
House Sparrow	31,321	34,704 (1983)	21
Ring-billed Gull	14,836*	14,836 (1992)	8
American Goldfinch	11,881	13,788 (1990)	20
Brown-headed Cowbird	11,831*	11,831 (1992)	20
Blue Jay	11,711	13,446 (1984)	21
Northern Cardinal	11,427*	11,427 (1992)	21
Mourning Dove	11,377	12,100 (1990)	21
Canada Goose	10,643*	10,643 (1992)	7
American Crow	9,400	13,226 (1991)	21
Chimney Swift	7,798	9,987 (1983)	20
Eastern Meadowlark	7,720*	7,720 (1992)	16
Barn Swallow	6,963	18,156 (1983)	21
Mallard	6,921	7,306 (1991)	12
Song Sparrow	6,216	6,218 (1990)	8
Rock Dove	6,209	7,492 (1985)	18
House Wren	5,478		1

\* Denotes new high counts

Will); 148 Wilson's Warblers in 45 counties; 14 Canada Warblers in 11 counties (including Coles, Douglas, Du Page, Edwards, Jackson, Kankakee, Madison, Moultrie, Union, Wabash, Whiteside); 41 Blue Grosbeaks in 16 counties but in the north only in McHenry and Will.

COUNT RECORDS SET

We set 4 new all-time highs and equaled 1 other (Table 4). Our 5,228 party hours bested 1986's 5,050. Our 2,604 party miles walked bested 1988's 2,416. Our 21,846 party miles driven bested 1991's 20,356. Our 71 counties with 100 or more species bested 1991's 70. Our 49 species in 90 percent or more counties tied 1991. Our 257 species was eight short of the high. For only the 3rd time, we topped the half-million bird mark.

Our number of participating counties leaves 7 not participating. 1986 remains the only year that all 102 counties reported. Our total observers was only 38 below the records, but our number of counties with 20 or more observers was well short of the record 23.

Many thanks to Vernon Kleen for his assistance and to the county compilers, the backbone of this project. Let's do this again on Saturday, May 8, 1993. Contact your county compiler for more information on how you can join the state's annual spring bird count. ■

- 390 Valley View Circle  
R.R. 1  
Dahinda, IL 61428

TABLE 4  
ANNUAL COMPARISONS

	1992	1991	1990	Highest Total
Species	257	256	265	265 (90)
Total Birds	505,308	537,446	515,549	537,446 (91)
Participating Counties	95	94	97	102 (86)
Total Observers	1,491	1,487	1,529	1,529 (90)
Party Hours	5,228	4,894	4,963	5,228 (92)
Party Miles Walked	2,604	2,317	2,358	2,604 (92)
Party Miles Driven	21,846	20,356	19,994	21,846 (92)
Species in 90% Or More Counties	49	49	47	49 (91/2)
Counties With 100 Or More Species	71	70	66	71 (92)
Counties With 20 Or More Observers	17	23	23	23 (90/91)

## Yellow-throated Warbler Nests in Winnebago County

by Dan Williams

Birds fell from the sky in Winnebago County as a front began delivering a cold drizzle during the spring bird count, May 8, 1982. A group of us was scouting Four Lakes Forest Preserve, an old fish hatchery surrounded by farm fields, and a good migrant trap.

Marian Doyle spotted the bird. "Yellow-throated Warbler! Hurry up!" she called.

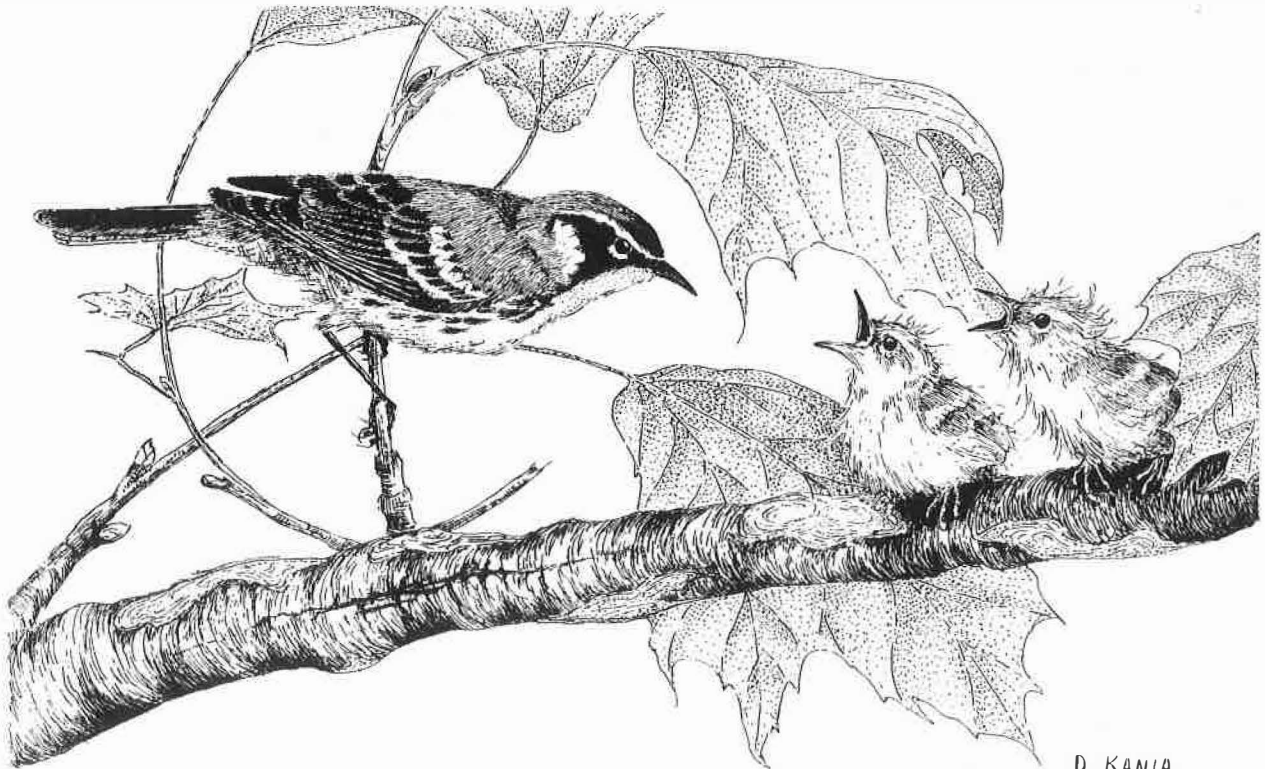
Everyone saw a brilliant male

with its bright yellow throat and distinct black and white facial markings. It was an exciting find since the bird is regarded as a rare spring migrant in northern Illinois. Yet, twelve miles away at approximately the same time on the same day, spring bird counters were seeing another male Yellow-throated Warbler (*Dendroica dominica*). The species apparently moved into Winnebago County that day and

has returned every year since, often remaining throughout the breeding season to nest.

Observers have seen the warblers from late April through August, sometimes into early September. In the spring of 1982, the county had four records.

The first confirmed nesting record was made on July 5, 1982, when I saw an adult carrying food to young at the nest in the Sugar



D. KANIA

*Yellow-throated Warbler with young. Drawing by Denis Kania.*

River Forest Preserve just south of the Wisconsin border. Subsequent nests have been confirmed at the site, the last in 1991 when Lee Johnson observed recently fledged young during the final year of the Illinois Breeding Bird Atlas. Although nests have not been discovered every year in Winnebago County since the spring bird count find, calling males have been heard annually for the past ten years at the Sugar River Forest Preserve. From a high perch, the male calls a descending series of clear whistles ending with a rising, short double note.

Observers heard calling males in at least three other forest preserves in Winnebago County in 1992, although no nests were confirmed. The discoveries were made along the Kishwaukee River and Kilbuck Creek in southeastern Winnebago County. The species can also be found along the Sugar River in Rock County, Wisconsin (See Tesen, "Wisconsin's Favorite Bird Haunts," Third Ed., 1989).

The male Yellow-throated Warbler is distinguished by his bright yellow throat, distinct black and white facial markings, gray back, and white belly with black streaking on the sides. His cap is dark black, fading to gray on the nape. The female is substantially similar, but the colors, particularly the yellow, are not as bright. The black cap is less distinct. The top of the head, nape, and back of this species are often not visible because the bird is frequently viewed high in the forest canopy.

Yellow-throated Warblers have two sub-species or races. Although no specimens have been taken from Winnebago County, the bird discovered is presumably the western race or sycamore warbler of the Mississippi Valley.

Winnebago County, situated in northern Illinois on the Wisconsin border is drained by the Rock River, which flows from central Wisconsin, and empties into the Mississippi River at the Quad City

area. The county is intersected by medium-sized rivers, the Pecatonica and Sugar, which flow from southwestern Wisconsin; the Kishwaukee River, which enters from northeastern Illinois and southern Wisconsin; and several creeks.

This extensive river system contains substantial stretches of high-

---

*'From a high perch,  
the male calls a  
descending series of  
clear whistles ending  
with a rising, short  
double note.'*

---

grade river bottom forest frequently dotted by sycamores and introduced white pines in the higher areas. The area offers perfect habitat for nesting Yellow-throated Warblers, which typically live in bottomland woods with sycamores along streams or in pine plantations.

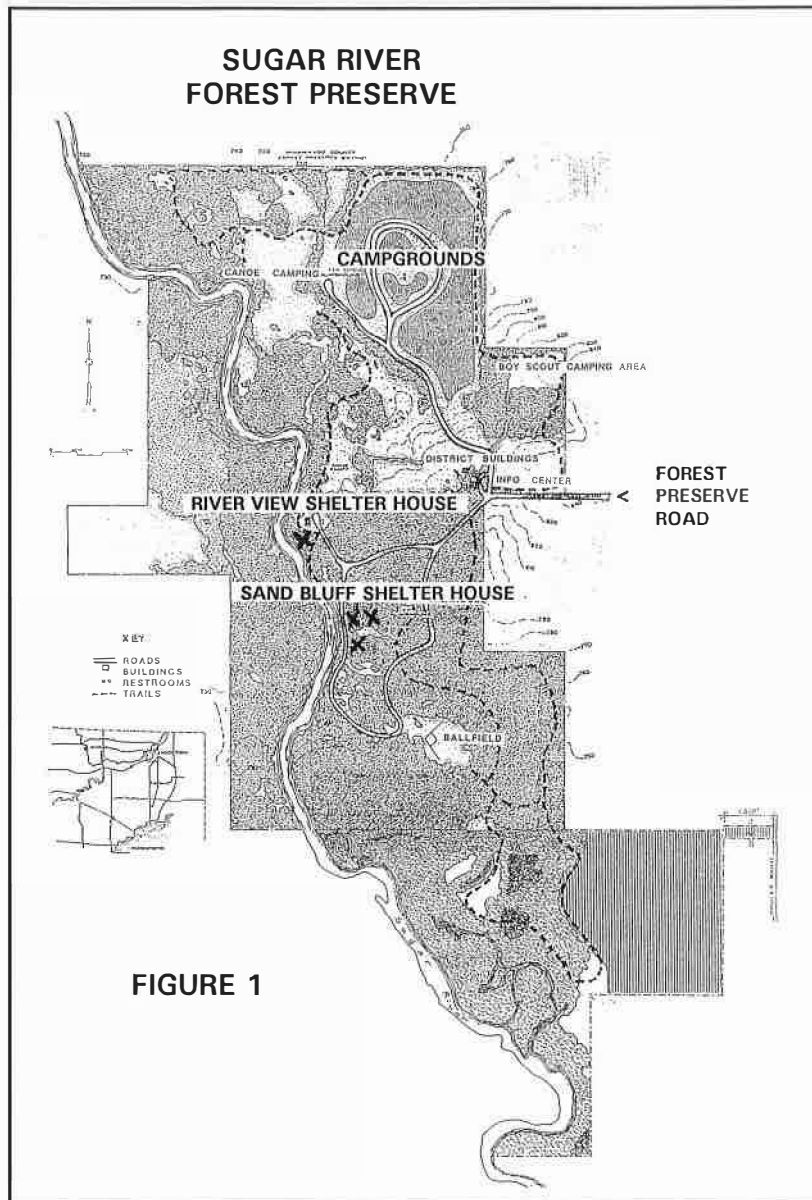
The Yellow-throated Warbler builds a nest ten to 120 feet above the ground in pine or deciduous branches, usually between fifteen to sixty feet. The bird constructs the nest of fine grasses, plant down, caterpillar silk, and occasionally feathers.

Birders may find it difficult to locate nests because of the height and particularly when the nest is placed in a pine. I located the 1982 nest about forty feet high in a pine tree and set below and inside the overhang of the next higher branches.

Bob Montgomery, senior staff biologist at Max McGraw Wildlife Foundation, said that only sixteen confirmed nests were reported in the ninety-seven records of Yellow-throated Warblers made during the Illinois Breeding Bird Atlas Project. Of these sixteen, only three records were confirmed north of Interstate 80 (LaSalle, Lee, and Winnebago counties). Of twenty-seven probable nesting occurrences, only three were north of I-80 (Lake, one, and Winnebago, two). Possible nesting or observed birds were recorded in Bureau, Cook, and Jo Daviess counties.



*River View shelter house at Sugar River Forest Preserve. Yellow-throated Warblers have nested near the shelter, and can frequently be heard singing here. Photo by Dan Williams.*



**FIGURE 1**

To find the Yellow-throated Warbler in Winnebago County, start at the Sugar River Forest Preserve. Enter the preserve by proceeding straight on Forest Preserve Road through the gate (Figure 1 - Map). Do not turn right toward the campground.

Within 500 feet, the road becomes a one-way loop. Follow the loop approximately 500 feet to the first right turn toward the River View shelter house. Park in the cul-de-sac at the shelter house and listen for the birds calling from this

location.

The site is on a bluff overlooking the river. A sycamore stands adjacent to the shelter and a pine stand borders the north and east sides of the cul-de-sac across the driveway. This is the location of the first nest, and frequently a place to both hear and see males. Eastern Phoebes have also nested near the shelter house for several years. Pileated Woodpeckers sometimes call from the woods across the river.

If you have no luck, walk back

down the driveway toward the loop road and follow it to the right, down the hill, and toward the picnic ground. On the left, just as the road begins to go downhill, you will find the Sand Bluff Shelter house and playground area. Observers saw the birds in this area in 1992 and heard the male call from the tall deciduous trees next to the pine stand. You may also hear or see other southern species here such as the Kentucky Warbler and Acadian Flycatcher. Also, look for Cerulean Warblers, Yellow-throated and Red-eyed Vireos, cuckoos, and Scarlet Tanagers. Occasionally Summer Tanagers pass through in mid-May.

Approximately one mile north of the River View shelter, Cooper's Hawks have bred. Barred Owls call intermittently throughout the day and evening, while Whip-poor-wills sing from the bluff after dark. Even if you do not find the Yellow-throated Warbler, you will enjoy bird watching at Sugar River Forest Preserve.

*Directions to Sugar River Forest Preserve : Exit interstate 90 at Illinois 75, south of the Wisconsin state line. Proceed west on 75 toward Rockton. Upon entering Rockton, turn west at Union Street. Note the brown and white sign mentioning the forest preserve, which is approximately nine miles from this sign.*

*Follow Union Street across the Rock River, where Union Street changes to Rockton Road. Continue west on Rockton Road to Forest Preserve Road. Another sign marks this intersection. Turn right and follow Forest Preserve Road to its end at the entry of the preserve.*

Thanks to Bob Montgomery, senior staff biologist of the Max McGraw Wildlife Foundation, for providing the Breeding Bird Atlas data, and to Mark Keister, Director of the Winnebago County Forest Preserve District, for permission to reprint the district's maps. ■



We watched loons doing flattened-out threat displays, surface rushes, and penguin dances as a prelude to their migration to more northerly lakes. I had never before heard Common Loons calling during migration in Illinois.

- David B. Johnson, 504 Crown Point Drive, Buffalo Grove, IL 60089.

#### White-faced Ibis at Gilman

On the evening of 2 May 1992, I received a telephone call from Richard Biss, who operates the Chicago Audubon Society Rare Bird Alert. A dark ibis had been seen by a motorist at the Gilman exit of I-57 in Iroquois County. Since Gilman is down state and less than an hour from my home, he asked if I would look for the bird. The next morning I drove to Gilman, wondering what I would find since not much ibis habitat exists there.

At dawn I approached the Gilman exit. A large pond for a tree nursery on the east side of the highway looked promising, but I decided first to check the southbound exit where the bird was said to have been seen. As I crossed the overpass, I spotted a small puddle in the grassy triangle between the southbound lanes and the southbound exit. In that puddle was the ibis, proving that it pays to check all available habitat.

It was overall glossy brown and appeared to have red legs. A close look with a spotting scope confirmed the red legs and showed the red eye and thin white line surrounding the bill identifying it as a White-faced Ibis (*Plegadis chihi*).

By 7 a.m. I had spread the word to the Chicago Audubon Society Rare Bird Alert and to local birders in Champaign-Urbana. Although the bird only remained for the day, Richard Biss, Andy Sigler, and several other birders managed to see it.

- Robert Chapel, 306 1/2 West California, Urbana, IL 61801.

*Editor's note: This sighting represents the eleventh spring record for Illinois.*

#### Yellow Rail: A Hands-on Experience

Rick Wright had never seen a Yellow Rail (*Coturicops noveboracensis*) when he moved to Urbana in 1991. So when one was seen in a field at the Henning Road Strip Mine Ponds in Vermilion County in April 1991, he and I made the requisite trek through thick wet grass and shallow cattails, but to no avail. The mines are located one mile northeast of I-74 and US-150 on the outskirts of Danville.

As mid-April 1992 approached, we again prepared to work the Henning Road field since Yellow Rails had been found there in 1989 and 1991.

We knew the routine. We had to cover the field meticulously, zig-zagging over nearly every square inch. The bird would sit still, and if we were lucky enough to find one, we would flush it when we were almost directly on top of it. We would then see the bird briefly, catching a look at its distinctive wing pattern as it landed, and then probably not get another view that day.

On 11 April 1992, the unexpected happened. After covering the field for about half an hour, I noticed a movement at my feet. It was a Yellow Rail. I called Rick who also saw the bird. The rail began to slink rapidly through the grass, working back and forth, disappearing, only to reappear a few feet behind us. After a few minutes, when the bird had still not flushed, I reached down and actually grabbed the bird briefly before it compressed its feathers and squirmed from my grasp. It flew from my hands to freedom, giving us an excellent view of its wings.

- Robert Chapel, 306 1/2 West California, Urbana, IL 61801.

*Editor's Note: Birders are not encouraged to touch healthy, wild birds.*

#### Winnebago County's First Piping Plover

The telephone was ringing 26 April 1992 as we unlocked the back door and hauled the suitcases into the kitchen. The caller thought that we might want to know that a Piping Plover (*Charadrius melodus*) was spotted at Winnebago pond just west of the intersection of Trask Bridge Road (Route 70) nine miles north-west of Rockford. We were on our way without unpacking the rest of the car.

Ten minutes later we found a group of birders at the pond. Several were already leaving, but they assured us that the others had the bird fixed in their scopes. The late afternoon light made viewing difficult. Still we got satisfactory views of a basic plumaged Piping Plover as it darted in and out from low spots and vegetation while feeding.

At noon the next day we returned and relocated the bird. It fed on worms plucked from the flooded field while we watched at close range. We had a leisurely look at a small, very pale, grayish brown plover with a short, stubby, all black bill and orange legs. A pale collar separated the back from the similarly colored nape. A dark eye was distinctive against a white face with a pale sand-colored cap and sides of the face. A faint white superciliary extended a short distance behind the eye. The bird lacked black banding or head

marks, but a faint sandy-colored band extended nearly across the upper breast. The Piping Plover has not been previously recorded in Winnebago County.

- Dan and Barbara Williams, 6055 Safford Rd., Rockford, IL 61101.

*Editor's note: This striking shorebird is endangered in Illinois and the United States. The Piping Plover is extirpated as a breeding bird in Illinois having lost its sandy beach nesting habitat to erosion, industry, and human disturbance. For an account of the species' reduction in the Great Lakes region, see Russell, "The Piping Plover in the Great Lakes region", American Birds, 37:951-55.*

#### Lake County's First Black-necked Stilt

I left work early 22 April 1992 to scan for waterfowl at a newly developed wetland mitigation project on Atkinson Road near Green Oaks in Lake County. I was scanning a mud flat that extended out into the water when a tall black-and-white shorebird with bright bubble gum pink legs caught my attention. I immediately identified it as a Black-necked Stilt (*Himantopus mexicanus*).

The bird teetered a bit as a small peep, later identified as a Baird's Sandpiper, ran underneath the stilt's legs. The stilt fed cautiously along this flat and occasionally ventured two to three meters into the water. Knowing how rare this species is, I recorded these field marks: white throat, breast, belly, flanks and undertail coverts; contrasting black primaries and secondaries; thin, slightly upturned black bill at least twice as long as the head; long neck; white postocular spot contrasting with the black crown, nape, and auricular area; and dark brown back and scapulars. The last field mark could be seen only through my Meade 20-60 X spotting scope at about 25 X. It is diagnostic for the female of this species according to *Shorebirds, an Identification Guide* (Hayman, et al., 1986). I was as close as fifty meters from the bird when using my telescope. I also had just seen over 200 individuals of this species in Chiapas, Mexico two months earlier.

After twenty minutes of observation, I telephoned several Lake County birders. Unfortunately, by the time the others arrived, the bird had already departed and could not be relocated. This is the first Lake County record, the ninth for the state, and the earliest spring record for the state. My documentation is on file with the Illinois Ornithological Records Committee.

- David B. Johnson, 504 Crown Point Drive, Buffalo Grove, IL 60089.

#### Adult Mew Gull at Sangchris State Park

At 6:30 a.m. on 30 April 1992, at the Sangchris State Park dam, I watched a gull try again and again to land on the water with a flock of Ring-billed Gulls. It was a medium-sized, dainty-looking adult with a wing tip pattern that reminded me of the Mew Gull (*Larus canus*) I had seen at Carlyle Lake in 1986. That is, there was much white between dark, similar to the wing tip of a Franklin's Gull.

I retrieved my 60 power Kowa telescope and when I returned, the gull had finally found a place next to the other gulls. I walked down the road to the east to get better light and some elevation. With a quick scan, I picked out the gull. Its bill was unmarked. The rest of the gulls were all ring-bills, most of them in immature plumage.

The Mew Gull was a little smaller and slimmer than a few of the ring-bills but was about the same size as the others. Its bill was shorter and thinner near the base and all dull orange-yellow. The head was peaked, while the ring-bills looked flat-headed. The eye looked dark. I could see a narrow reddish orbital ring.

In comparison with the only adult-looking Ring-billed Gull, the Mew Gull's back was a little darker in all angles of light. Even though the bird was at rest, the more extensive white was visible in the wing tips. Occasionally the gulls flew around allowing me excellent looks at the wing tips in flight. The wing tip pattern points to this bird being the western North American *Larus canus brachyhynchus*.

I studied the bird for an hour and then went to check a mud flat nearby. The bird was gone when I returned.

This is the first record for Sangamon and Christian counties and one of the few records for the state for Mew Gull. It is also the latest spring record for Illinois.

- H. David Bohlen, Illinois State Museum, 1920 South 10 1/2 Street, Springfield, IL 62703

*Editor's note: This sighting represents the ninth state record if the four Mew Gulls seen by Robert Hughes in Chicago during the winter of 1991/92 were separate birds (See Meadowlark, Vol. 1, No.3).*

#### Black-billed Magpie in Winnebago County

On 17 May 1992 a stranger drove up my driveway at the end of Orth and Paulson roads in southeastern Winnebago County one mile southeast of Rock Cut State Park. I was on my way to the horse barn when he announced, "Hey, there's four Golden Eagles down the road."

I told this stranger, without thinking much of it, that, "I'd check it out." He left and I decided to investigate these eagles which turned out to be four Turkey

Vultures sitting on the ground. This was about 10:30 a.m. on a partly sunny day, following two consecutive days of strong westerly winds.

At a distance of approximately fifty feet I noticed what I thought was a crow sitting in a recently planted corn field with a piece of white trash or a milk container in front of it. When I viewed the bird with my binoculars, it flew up to a grassy ditch adjacent to Paulson Road where a dead raccoon was releasing a foul odor into the air.

I immediately recognized this bird as a Black-billed Magpie (*Pica pica*). I watched the magpie for at least six minutes through my binoculars observing the following field notes: crow-sized with a black bill, face, head, eyes, back and breast and boldly contrasting white wing patches and belly. Most conspicuous was the long black tail with a slight green iridescence. The bird exhibited no scruffiness.

The magpie then flew up and landed on a barbed wire fence in front of my car about twenty feet away from me. Several seconds later, the magpie flew off to the north. I then raced to get my husband Matt, who had gone birding at nearby Rock Cut State Park, but we could never relocate the bird.

I felt like I was in the "twilight zone" after trying to find the four Golden Eagles which were supposed to be in the field yet turned out to be vultures and then finding a bird which is not within its normal range in Illinois.

Three days after our sighting a Black-billed Magpie was also reported just to the north of us near Madison, Wisconsin.

- Jan Vincent, 4463 Paulson Rd., Caledonia, IL 61011.

*Editor's note: Documentation of this record is on file with IORC. American Birds, 46:427 also reported a Black-billed Magpie sighting in Wisconsin in April 1992.*

#### Spring Record for Sprague's Pipit in Southern Illinois

Sprague's Pipit (*Anthus spragueii*) is expected to occur in small numbers throughout the state each year. Yet it is so difficult to find that bird observers only hope to stumble across it someday.

We had encountered a few of these pipits in Texas but never in Illinois. On 18 April 1992 we were searching for birds in a large alfalfa field in an expansive, open, relatively flat agricultural basin of the Cache River bottoms 1 and 1/2 miles southeast of Perks, IL, in Pulaski County. We counted 129 Savannah Sparrows that day.

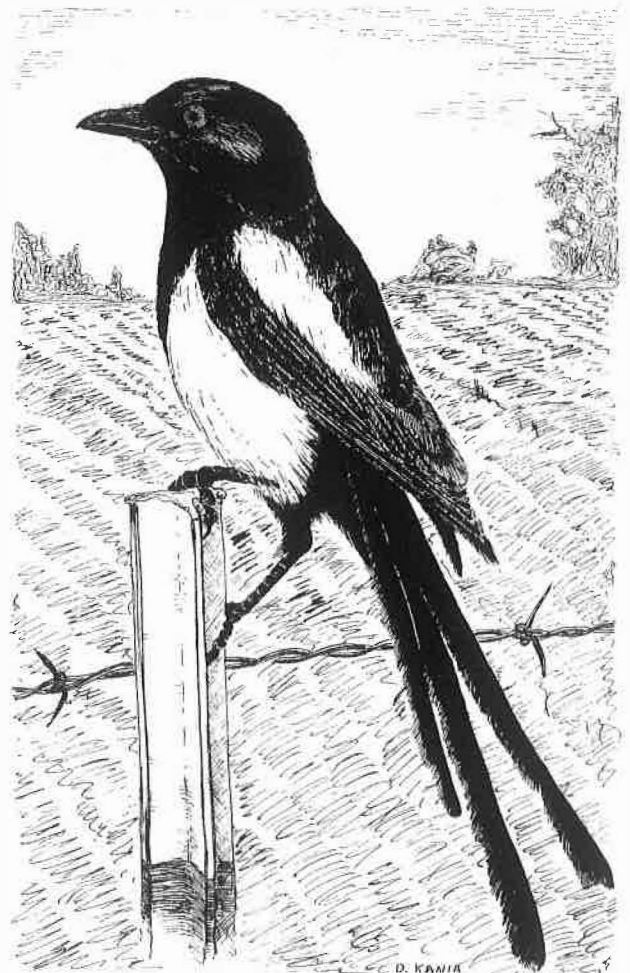
Earlier in spring, and in previous years, this field had also catered to three Smith's Longspurs, many Bobolinks, Upland Sandpipers, and flocks of as many as

340 American Pipits. Due to the unusual concentrations of common birds and occurrences of rarities, the field had earned the name "magic alfalfa field" among local birders.

Because we had heard and seen Sprague's Pipit before, and because it is one of those species you study and prepare for, we immediately recognized our great find when a small bird flushed fifteen meters ahead of us, flew over us uttering a squeaking "squeent" call note, and then landed seventy meters away in a heavily-grazed cow pasture.

We studied the bird with binoculars for several minutes as it foraged among the clumps of pasture grass. It was quite adept at eluding us, however, so we retrieved a scope to get better looks at the field marks.

We viewed the bird with the scope from as close as twelve meters and noted the following field marks: overall sandy color with a darkly streaked back; small



*Black-billed Magpie in Winnebago County, 17 May 1992. Drawing by Denis Kania.*

rounded head with relatively large dark eyes (giving it an Upland Sandpiper-like appearance); diffuse buffy eye ring; dark streaked crown; white outer tail feathers; yellow-orange lower mandible contrasting with the darker upper mandible; bright orange-pink tarsi and toes; and a small buffy-rust patch in the auricular region. Unlike American Pipits, this bird did not wag its tail while it walked.

Only one other spring record of Sprague's Pipit exists for southern Illinois. Graber (1957, *Audubon Bulletin* 102:5-7) found six or seven in an alfalfa field near Omaha, Gallatin County on 16 March 1957. Sprague's Pipits may migrate through Illinois regularly, but the vast open fields that they prefer are often neglected by birders.

- W. Douglas Robinson, Department of Ecology, Ethology, and Evolution, University of Illinois, 606 E. Healey St. Champaign, IL 61820.

- Todd Fink, R.1, Box 220, Ozark, IL 62972.

#### Western Tanager in Du Page County

At 4 p.m. 16 April 1992 our 3-year-old grandson, Danny Volgenau, called our attention to a bird outside our patio window. Looking at our feeder, I was

stunned to see a bird which was so brilliant for such a gray day. Our daughter, Krista, from Portland, Oregon immediately recognized the bird as a male Western Tanager (*Piranga ludoviciana*).

The tanager was feeding on oiled sunflower seeds at our feeder. It occasionally flew to the branches of the hawthorn tree from which the feeder was suspended. The bird lingered in our yard for two hours and was cautiously observed and photographed using a 35mm Nikon camera.

The following details were noted: tanager-sized, about seven inches long; bright yellow body; black wings with light stripes; black tail; black back; and red-orange face and crown. I later shared the Western Tanager photographs with Dr. Floyd Swink of the Morton Arboretum who confirmed the identification.

- Suzanne A. Reininga, 317 N. Garfield St., Hinsdale, IL 60521.

*Editor's note: Documentation of this sighting, including a photograph are on file with IORC. This sighting is just one of three Western Tanagers seen in the state during spring 1992, all within three days of each other in April. They represent the tenth, eleventh, and twelfth records for the state. See the Field Notes section of this journal for the other records.*

---

## AVIAN ANNALS

---

by Eric Walters

#### 70 years ago:

The state's first reported Lewis' Woodpecker was seen three consecutive days in late May in a backyard garden where it often perched on top of a large birdhouse in the Rogers Park area of Chicago (*Auk* 41:156-7).

#### 55 years ago:

A Pine Woods Sparrow (Bachman's Sparrow) was observed in Chicago's Lincoln Park for three consecutive days (*Bird Lore* 40:224).

#### 45 years ago:

Two pairs of Upland Sandpipers were frequently noted "on the prairie" within a slated subdivision near the Skokie/Evanston border where they nested that summer (*Audubon Bulletin* 69:1).

#### 40 years ago:

For the second consecutive spring, specimens of the Burrowing Owl were collected in Chicago (*Audubon Field Notes* 7:276).

One observer reported 150 Smith's Longspurs near

Champaign which apparently was the first local record there since 1939 (*Audubon Field Notes* 7:276).

A Green-tailed Towhee seen in Murphysboro was the rarest find during that spring (*Audubon Field Notes* 7:276).

#### 35 years ago:

A thunderstorm accompanied by severe winds downed a Yellow Rail near a men's dormitory at the University of Illinois where it was captured, kept alive in a cage for two weeks, and then released (*Audubon Bulletin* 107:8).

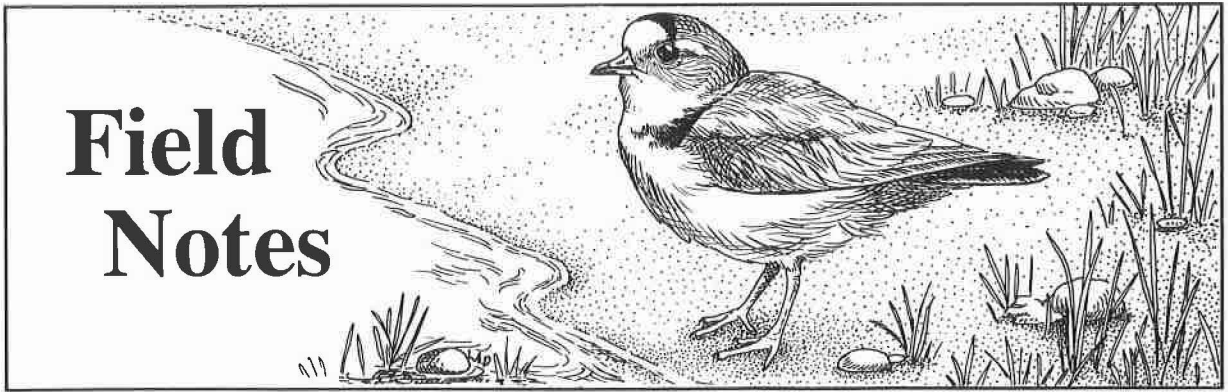
#### 30 years ago:

An experienced observer described the Caspian Tern as a "prized find for Midwesterners being seldom seen away from the Mississippi River or Lake Michigan" (*Audubon Bulletin* 125:21).

#### 10 years ago:

Illinois' first confirmed sighting of Cassin's Sparrow was verified after it was caught in a mist net at Chicago's Olive Park (*Illinois Audubon Bulletin* 206:22).

# Field Notes



## 1992 SPRING MIGRATION

by *Eric Walters*

Many observers described the 1992 spring migration as less than exciting, yet others reported some noteworthy ornithological sightings making for a unique spring season.

Spring 1992 followed the warmest recorded Illinois winter. Lakes opened from January on, and fronts that would be considered warm for that time of year seemed to regularly come through the state before March. Nearly all the dabbling and diving ducks along with the usual late February migrants were located or noted in increased numbers in January. Instead of including all the January early arrivals, an attempt was made in the data below that best determined when the first strong northward "push" occurred for the various species.

Passerine species that appeared in the state during 29 February to 8 March may have wintered just south of Illinois. Many of these arrival dates were a month or more early.

On 9 March a massive coldfront and snowstorm hit much of Illinois, which ended the unusually early spring migration. However more passerines were observed during the next two weeks. Observers discovered many of these birds in protected woodland areas or at feeders. From 9 March to the end of spring, weather and precipitation made for less than desirable conditions for migration. Observers reported low numbers of terns, rails, vireos, warblers, and sparrows. However, shorebirds, which were not widely reported for the last few springs, were well represented this spring. Vagrants, numerous uncommon species, very early and late sightings along with high concentrations of a few of the regular species made this one of the better shorebird springs in recent years.

Many passerine vagrants appeared from 16 to 19 April. The three straight days of strong southwest winds over 25 miles per hour may have played a major role in driving these rarities and other early arrivals to Illinois. Also, a number of rarities usually associated with water areas occurred during the period from 22 April to 2 May.

Central Illinois observers noted late May and early June migration of passerines and flycatchers. Although observers reported a few straggling migrants into mid-June, migration ended by 25 May.

Statewide March temperatures averaged 3.4 degrees above normal, continuing a trend of recent springs. April temperatures averaged .1 below normal. May averaged 1.5 below the norm. Except for a few short and strong warm bursts in April, this spring's temperatures were quite cold from mid-March onward. Precipitation levels for all three months were below normal by -.81, -1.14 and -2.79 inches respectively.

A special thanks is extended to all contributors to this report. Those records that were most significant have been included in this report and the birders responsible for the sighting are listed below. The first initials of their names were used except as indicated below by three initials: Bruce Aird, Cindy Alberico, Ivars Ambats, Alan Anderson, Douglas Anderson, Louise Augustine, Steve Bailey, Laurence Binford, Richard Biss, Bill Bixby (BBx), David Bohlen, John Brandt, David Brenner (DBr), Arlene Brei, Ray Boehmer (RBo), Lynne Carpenter, Karin Cassel, Robert Cécile, Robert Chapel, Elizabeth Chato, Roger Coons (RCo), Robert Danley, Myrna Deaton, Rich DeCoster, Judy DeNeal, Sheryl DeVore, Danny Diaz, Peter Dring, Jeff Donaldson (JDo), Didge Donovan (DDo), Rodney East (REa), Ralph Eiseman, Bob Erickson, Carol Fialkowski, Darlene Fiske, Todd Fink, Sue Friscia, Rob Geoff (RGe), Michelle Georgi (MGe), Bill Glass, Joel Greenberg, Jim Hampson, Kay Hanson (KHa), Ralph Herbst (RHè), Kanæ Hirabayashi, Michael Hogg, Jeff Hoover (JHo), Robert Hughes, Walter Jedd (WJè), Doris Johanson (DJh), David Johnson, Lee Johnson (LJo), Robert Johnson (RJo), Denis Kania, Peter Kasper, Dan Kassenbaum (DKa), Vernon Kleen, Al Knox (AKn), Tom Kreiling (TKr), James Landing, Eric Latturner, Steven Lee, Bob Lindsay (BLi), David Mandel, Walter Marcisz, Keith McMullen, Judy Mellin (JMè), Joe Milosevich, Jim Neal, Greg Niece, Joe Nowak (JNo), John O'Brien, Richard Palmer, Christine Philip, Jack Pomatto, Judy Pollock (JPo), John Purcell (JPu), Suzanne Reininga (SRè), Doug Robinson, Karen Rodemaker (KRo), Harriet Rylaarsdam, Jeffrey Sanders (JSa), Richard Sandburg (RSa), Darrell Schamaugh (DS), Wes Serafin, Sharon & Tom Schmitz (SSc), Tom Schulenberg, Val Schwarz, Andy Sigler (ASi), Jim Smith, Muriel Smith, Jim Solum (JSo), James Steffen (JSt),

*FIELD NOTES HEADING: Piping Plover drawing by Leslie A. DeCoursey.*

Alan Stokie, Todd Strole (TSt), Kevin Swagel, Craig Thayer, Dave Tomasko, Jan Vincent (JVi), Randy Wade (RWa), Eric Walters, Peg Walsh, Allan Welby, Dan Williams, Zelma Williams, Ken Wills, Rick Wright, Dick Young.

Finally, a special thanks is also due to the following editorial reviewers who critically reviewed this report: Todd Fink, Doug Robinson, Robert Chapel, Robert Danley, Vernon Kleen, and David Johnson. In addition, thanks to Richard Biss for a summary compilation from the Chicago Bird Hotline.

**Abbreviations Used:**

- ad. = adult
- subad. = subadult
- imm. = immature
- yg. = young
- pr. = pair
- \* = documented record
- \*\* = specimen record
- resp. = respectively
- m.ob. = many observers
- est. = estimated
- Co. = County
- L = Lake
- CA = Conservation Area
- F.P. = Forest Preserve
- F.W.A. = Fish and Wildlife Area
- N.W.R. = National Wildlife Refuge
- N.C. = Nature Center
- N.P. = Nature Preserve
- S.P. = State Park
- S.F. = State Forest
- et al. = others present
- S.B.C. = Spring Bird Count
  
- EA: = Earliest Arrival(s)
- MC: = Maximum Count(s)
- LD: = Latest Departure(s)
  
- C'dale = Carbondale (Jackson Co.)
- Carl.L = Carlyle Lake (Clinton Co.)
- CBG = Chicago Botanical Gardens (in Glencoe, Cook Co.)
- Chi = Chicago's lakefront parks (excluding JP) (Cook Co.)
- Clin.L = Clinton Lake (De Witt Co.)
- CNC = Crabtree N.C. (Cook Co.)
- COLSP = Chain O'Lakes S.P. (Lake Co.)
- CONWR = Crab Orchard N.W.R. (Williamson Co.)
- DPCA = Des Plaines C.A. (Will Co.)
- Fermi = FermiLab at Batavia (Du Page Co.)
- IBSP = Illinois Beach State Park (Lake Co.)
- JP = Chicago's Jackson Park (Cook Co.)
- KFWA = Kaskaskia F.W.A. (Moultrie Co.)
- LCal = Lake Calumet (Cook Co.)
- LRen = Lake Renwick (Will Co.)
- M.Arb = Morton Arboretum (Du Page Co.)
- MFWA = Middlefork F.W.A. (Vermilion Co.)
- MM = McKee Marsh (Du Page Co.)
- MS = McGinnis Slough (Cook Co.)
- Rend L = Rend Lake (Franklin Co.)
- Sang.L = Sangchris Lake S.P. (Sangamon and Christian Counties)

- SRSP = Starved Rock S.P. (LaSalle Co.)
- Spfld = Springfield (Sangamon Co.)
- Wauk = Waukegan (Lake Co.)
- LVerM = Lake Vermilion (Vermilion Co.)

Casual and vagrant species are capitalized, underlined and boldfaced. The location(s), maximum count(s), arrival and departure dates that are very significant are bold-faced and underlined. Counties are boldfaced and underlined in italics in the report below if the record is reported or known to be a county first.

A number in parentheses indicates the number of birds observed at a particular location or date. No number given signifies single birds.

-----  
**1992 SPRING DATA**

**Red-throated Loon**

30 Mar.-4 Apr. (ad. in molt), L Decatur (RSa, \*MD, \*RP).

**Common Loon**

EA: 29 Feb., CONWR (KM); 17 Mar., Spfld (DB); 22 Mar., Saganashkee Slough (WS). MC: 52, Lake Co. 5 Apr. (DJ, see Seasonal Highlights); 11, Spfld, 9 Apr. (DB); 11, Rock Cut S.P., 12-18 Apr. (DW). LD: 31 May, Spfld (DB); 23 May (2), MS (WS, JO); 14 May, L Decatur (MD). Others: 74 seen between 2-5 Apr. in nw Lake Co. and ne McHenry Co. (DJ, et al.); 6, JP, 21 Apr. (JO).

**Pied-billed Grebe**

EA: 17 Feb., CONWR (KM); 28 Feb., Urbana (RC); 29 Feb., CBG (AS); 2 Mar. (3), Du Page Co. (RCo). MC: 43, IBSP (Camp Logan), 16 Apr. (JSo); 36, Spfld, 11 Apr. (DB); 24, JP, 13 Apr. (HR). LD: 31 May, JP (HR); 28 May, Spfld (DB).

**Horned Grebe**

EA: 21 Feb., Spfld (DB); 22 Feb. (2), Saganashkee Slough (Cook Co.) (AS); 28 Feb., Clin.L (RC). MC: 95 & 74, Spfld, 14 & 23 Mar. (DB); 12, LRen, 22 Mar. (JM); 10, Homer L (Champaign Co.), 4 Apr. (RC). LD: 9 May (2), MS (RB); 4 May, Spfld (DB).

**Eared Grebe**

EA: 8-9 Mar., Spfd (DB); 28 Mar., Spfd (DB); 3 Apr., Chi (Calumet Park) (DM). LD: 25-30 May, CBG (AS, JHo); 4 May (2), UCCA (TF, JD, LA). Others: 2, Sangamon Co., 14 Apr. (DB).

**American White Pelican**

MC: 480, Hancock Co (along Mississippi River), 7 Apr. (MGe). LD: 26-27 Apr., MM (Du Page Co.) (DT, m.ob.); Others: 12-13 Apr. (4), LCal (JHo, m.ob.--photos); 9 Apr., LVerM. (\*SSc et al.).

**Double-crested Cormorant**

EA: 22 Feb., Carl.L (KM); 4 Mar. (3 ad.), LRen (JM); 1 Apr., Chi (KH). MC: 1000, Rend L, 29 Mar. (TF); 220, Blue Island (Cook Co.), 19 Apr. (WM); 200, Carl.L, 27 May (VK); 135, Spfld, 16 Apr. (DB). Some still present at end of season at Spfld, LCal, Riverdale (m.ob.). Numbers continue to increase.

**American Bittern**

EA: 5 Apr., Clin.L (MD); 13 Apr., near Spfld (DB); 17 Apr.,

Winnebago Co. (JDo); 19 Apr., Chi (JPu). LD: 24 May, LMermet (Massac Co.) (VK); 16 May, Arcola (EC, RC, RW); 12 May, Chi (RH). Others: 2, Chi (McCormick Place), 2 May (DM).

#### **Least Bittern**

EA: 30 Apr. (3), L Marmet (Massac Co.) (TF); 2 May, Chi (fide RB). LD: 22 May, Chi (JB). Others: 9 May, Du Page Co. (fide DY); 12 May, Chi (RH).

#### **Great Blue Heron**

EA: 3 Feb. (9), LRen (JM); 21 Feb., Spfld (DB); 24 Feb. (6), Baker's L (Cook Co.) (fide RB). MC: 365, LRen, 30 Mar. (JM). LD: 1 June (+), Spfld (DB); 15 May, JP (HR).

#### **Great Egret**

EA: 24 Feb., Baker's L (Cook Co.) (fide RB); 8 Mar., LRen (JM). MC: 367, LRen, 28 Apr. (JM); 66, Palos (West School), 31 May (WS); 47, LCal, 24 Apr. (WM). LD: 25 May, JP (DA); 24 May (4), Spfld (DB); 23 May (2), Clin. L (MD).

#### **Snowy Egret**

EA: 21-25 Apr., L Decatur (MD, RP); 21 Apr., UCCA (TF, JD); 16-30 May + (2), LCal (WM, m.ob.)-- but 3 there 18 May (WS). Others: 22 May (ad.), Spfld (DB).

#### **Little Blue Heron**

EA: 14 Apr., Jackson Co. (KM); 18 Apr., Spfld (DB); 19 Apr. (2), Danville (RC, SB); 27 Apr- 9 May, CNC (KW). MC: 17, s. Clinton Co., 9 May (KM). LD: 24-25 May, Lockport Prairie (fide RB).

#### **Cattle Egret**

EA: 4 Apr., Union Co. (KM); 9 Apr. (ad.), near Spfld (DB); 21 Apr., near Fairmount (JS); 22 Apr., Humbolt (Coles Co.) (RC); 23 Apr., O'Brien Lock & Dam (SF); 24 Apr. (12), LCal (WM); 24 Apr., Frontenac Marsh (Du Page Co.) (fide RCo). MC: 30, CONWR, 21 Apr. (KM); 20, Savoy (Champaign Co.), 2 May (RBo); 13, Plainfield, 27 Apr. (JM). LD: 12 May (2), Sang.L (DB); 11 May, Chi (RH); 7 May, Decatur (MD). Others: 3, Chi, 2 May (AW, EW et al.); 2, Lake Co. 9 May (LB).

#### **Green-backed Heron**

EA: 16 Apr., Spfld (DB); 17 Apr., LCal (WM); 18 Apr., Chi (JL).

#### **Black-crowned Night-Heron**

EA: 22 Mar. (ad.), LRen (JM); 3 Apr. (4), LCal (fide RB). MC: 1596, LCal, 27 Apr. (WM, AA et al.); 75, LRen, 9 May (JM); 35, Pontoon Beach, 8 Apr. (KM). Only four recorded all spring in Spfld (DB).

#### **Yellow-crowned Night-Heron**

EA: 11 Apr., Jackson Co. (TF, JD); 17 Apr., Chi (Powderhorn Marsh) (WM). MC: 3 (2 ad. & 2nd yr.), Lodge Park (Piatt Co.), 2 May (EC, RC). LD: 31 May, s. of Spfld (DB)--1st record since 1987; 17 May, Chi (Bird Sanctuary) (DM, RH). Others: 3 May, Vermilion Co. (JS); 13 May, Pecatonica F.P. (Winnebago Co.) (DW).

#### **WHITE-FACED IBIS**

2-3 May (ad. in breeding plumage), near Gilman (Iroquois Co.) (\*RC, \*RB, GN, AS). For additional details, see Seasonal

Highlights.

#### **Tundra Swan**

EA: 4 Mar. (4), Saganashkee Slough (Cook Co.) (CT); 11 Mar., Winnebago Co. (JDo). MC: 30, Winnebago Co., 3 Apr. (JDo). LD: 9 May, Mahomet (Champaign Co.) (\*RC, RW et al.); 28 Apr., LRen (JM); 20 Apr. (2), Boone Co. (JDo).

#### **Mute Swan**

EA: 1 Mar. (2), MS (REa). MC: 15, Lake Zurich, 5 Apr. (DJ); 11, Wolf L, 17 Apr. (JB).

#### **Greater White-fronted Goose**

EA: 30 Jan. & 9 Feb. (4), Spfld area (DB & WS et al.); 22 Feb. (2), Urbana (RC). MC: 17, UCCA, 8 Mar. (TF, JD); 9, w. Winnebago Co., 8-15 Mar. (DW, JDo). LD: 20 Mar., Sang.L (DB). Others: 3 (orange bills--Greenland race?), Spfld, 5-7 Mar. (DB).

#### **Snow Goose**

EA: 1 Feb., Spfld (DB); 22 Feb.-23 Mar. (blue), JP (HR, m.ob.). MC: 500, Buckhart (Sangamon Co.), 16 Feb. (RC); 250, UCCA, 29 Feb. (KM). LD: 9 May (imm. blue), Pecatonica F.P. (DW). Others: 8 Mar. (12), Pecatonica F.P. (Winnebago Co.) (DW); 28 Mar. (blue), IBSP (JSo).

#### **Ross' Goose**

EA: 14-16 Feb. (ad.), Buckhart (Sangamon Co.) (DB, RP).

#### **Canada Goose**

LD: 17 Mar. (3 of the "small race"), Spfld (DB). Others: 10,000 at UCCA on 17 Feb., but only 325 on 27 Mar. (KM); 22 Feb. ("small race"), Chi's Rosehill Cemetery (EL).

#### **Wood Duck**

EA: 16 Feb., Spfld (DB); 29 Feb., MS (WS); 2 Mar., M.Arb (RCo). MC: 50, Spfld, 17 Mar. (DB); 34, Evanston, 11 Apr. (EW).

#### **Green-winged Teal**

EA: 15 Feb., Spfld (DB); 24 Feb. (12), Braidwood (JM); 1 Mar. (2), CBG (LB). MC: 300, Clin.L, 12 Apr. (RC); 173, DPCA, 13 Mar. (JM). LD: 18 Mar. (male), Spfld (DB); 15 May (male), Skokie Lagoons (JMe). Others: 85, Carl.L, 22 Feb. (KM); 70, Evanston, 11 Apr. (EW). {American X Eurasian cross}: Sang.L, 17 Mar. (DB)--male that had white slashes on both shoulders & wings.

#### **American Black Duck**

MC: 119, Heidecke F.W.A. (Will Co.), 25 Mar. (JM); 50, Carl.L, 22 Feb (KM). LD: 9 May (2), LRSHNC (PD); 5 May, JP (KC); 28 Apr. (male mated with Mallard), Sang.L (DB).

#### **Mallard**

MC: 2000, DPCA, 13 Mar. (JM). Numbers dropped after 14 Apr. in Spfld (DB).

#### **Northern Pintail**

EA: 31 Jan. (10), Pere Marquette S.P. (KM); 15 Feb. (10), Clin.L, (RC, RP); 21 Feb. (2 males), Heidecke F.W.A. (JM); 25 Feb., MS (WS). MC: 185, Carl.L, 22 Feb. (KM). LD: 8 Apr., Eagle Park (Madison Co.) (KM); 4 Apr., Grass L (Lake Co) (DJ). Very scarce.

**Blue-winged Teal**

EA: 7 Mar., Buffalo (Sangamon Co.) (DB); 13 Mar. (3), DPCA (JM); 14 Mar. (3--2 females), Homer L (Champaign Co.) (RC); 16 Mar., MS (WS). MC: 120, Spfld, 18 Apr. (DB); 48, Evanston, 11 Apr. (EW). LD: 27 May, JP (HR); 9 May (2), Carl.L (KM).

{Cinnamon X Blue-winged hybrid}: 10 Apr., Spfld (DB)--had mainly Cinnamon Teal markings.

**CINNAMON TEAL**

21 Mar. (male), Nauvoo Flats Wildlife Area (Hancock Co.) (\*RCe, ZW et al.); 7 Apr. (male), Fermi (Du Page Co.) (\*PK).

**Northern Shoveler**

EA: 3 Feb., Spfld (DB); 19 Feb. (male), Chi (RH); 21 Feb. (2 males), Heidecke F.W.A. (Will Co.) (JM). MC: 665, Carl.L, 14 Mar. (KM); 190, Spfld, 17 Mar. (DB); 150, MS, 13 Mar. (WS). LD: 31 May, LCal (BA); 22 May, St. Charles (Kane Co.) (DSh); 14 May (3 males), Spfld (DB); 9 May, Carl.L (KM). Others: 47, LCal, 29 Mar. (WM); 17, Evanston, 11 Apr. (EW).

**Gadwall**

EA: 22 Feb. (6), Saganashkee Slough (AS); 23 Feb. (5 males), Clin.L (RC). MC: 292, Union Co., 1 Apr. (KM); 285, Carl.L, 14 Mar. (KM); 200, L Decatur, 22 Mar. (MD); 200, Spfld, 17 Mar. (DB); 108, Heidecke F.W.A. (Will Co.), 25 Mar. (JM). LD: 31 May (2), LCal (BA); 29 May (2), MS (WS); 23 May (pr.), Spfld (DB); 23 May (pr.), KFWA (RC). Others: 15, MS, 9 May (RB).

**EURASIAN WIGEON**

14-28 Mar. (male in breeding plumage), Clin.L (De Witt), (\*MD, \*RP, \*RC, m.ob.).

**American Wigeon**

EA: 6 Feb., Spfld (DB); 26 Feb., MS (WS). MC: 220, Spfld, 17 Mar. (DB); 76, DPCA, 13 Mar. (JM). LD: 29 May (2), Palos (West School) (WS); 23 May, KFWA (RC).

**Canvasback**

EA: 24 Feb. (male), Braidwood (JM); 28 Feb., Clin.L (RC); 1 Mar., MS (AS). MC: 170 & 140, Spfld, 17 & 3 Mar. (DB); 26, MS, 16 Mar. (WS); 21, Third L (Lake Co.), 2 Apr. (DJ). LD: 27 Apr. (8), L Decatur (MD); 21 Apr. (2), CBG (LB).

**Redhead**

EA: 15 Feb., Urbana (RC); 19 Feb., Saganashkee Slough (Cook Co.) (WS); 21 Feb. (8), Joliet (JM). MC: 58, Carl.L, 22 Feb. (KM); 40, Spfld, 1 Mar. (DB); 38, Heidecke F.W.A. (Will Co.), 9 Mar. (JM). LD: 22 May, MS (WS); 3 May (3), JP (KC); 28 Apr., CONWR (KM).

**Ring-necked Duck**

EA: 15 Feb. (10), Urbana (RC); 22 Feb., MS (WS); 24 Feb. (15), Joliet (JM). MC: 400 +, MS, 21 Mar. (JO); 355, Spfld, 3 Mar. (DB). LD: 1 June, Frontenac Marsh (Du Page Co.) (PW); 9 May (3), MS (RB); 9 May (2), Shabbona L S.P. (De Kalb Co.) (DSh); 7 May (male), Spfld (DB).

**Greater Scaup**

EA: 15 Feb. (male), Mahomet (Champaign Co.) (RC); 2 Mar. (6), Joliet (JM). LD: 17 May (2), Clin.L (MD); 9 May (pr.), LCal (\*WM); 9 May, MS (RB).

**Lesser Scaup**

EA: 15 Feb. (20), Mahomet (Champaign Co.) (RC); 21 Feb. (107), Joliet (JM). MC: 7800 (est.), Spfld, 17 Mar. (DB); 900, CONWR, 4 Apr. (KM); 800, Wolf L (Cook Co.), 29 Mar. (WM). LD: 23 May (2 males), Spfld (DB). Others: (mixed scaup flock): 5000 +, Chi (Calumet Park), 22 Mar. (JO).

**Oldsquaw**

EA: 22 Feb. (2), Carl.L (KM). MC: 190, Winnetka/Glencoe, 25 Mar. (EW, RH). LD: 2-17 May (winter plumage male), Clin.L (RC). Others: 13-30 Mar. (2 males), Spfld (DB); 18-21 Mar, JP (HR, KC).

**Black Scoter**

EA: 23 Mar., Glencoe (RH). MC: 5, Glencoe, 24 Mar. (RH). LD: 5 Apr. (female), Winnetka (SF); 28 Mar., Glencoe (RH).

**Surf Scoter**

EA: 7 Mar. (2), Clin.L (RC); 22 Mar. (2), Chi (Calumet Park) (JO); 23 Mar. (male), Glencoe (RH). MC: 5, Glencoe, 24 Mar. (RH). L.D.: 10-13 May (male), Spfld (DB); 25-26 Apr. (ad. male), Penfield (Champaign Co.) (m.ob.); 3 Apr. (2), Glencoe (RH).

**White-winged Scoter**

EA: 19 Mar. (20), Glencoe (RH). MC: 60, Glencoe, 3 Apr. (RH). LD: 11 Apr. (12), Glencoe (DJ).

**Common Goldeneye**

EA: 2 Mar. (50), LRen (JM). MC: 358, JP, 24 Mar. (HR). Apparently departed state by mid-Apr. (m.ob.).

**Bufflehead**

EA: 28 Feb., Clin.L (RC); 2 Mar. (2), LRen (JM). MC: 135, Spfld, 17 Mar. (DB); 44, JP, 8 Apr. (HR); 29, Evanston, 11 Apr. (EW). LD: 31 May (female), Clin.L (MD); 9 May (12), Cook Co. (fide EW).

**Hooded Merganser**

EA: 11 Mar., Palos (WS). MC: 27, Evanston, 11 Apr. (EW); 27, Spfld, 28 Mar. (DB); 17, LRen, 22 Mar. (JM); 12 (females), Arcola, 15 Apr. (RC). LD: 17 May (pr.), Clin.L (MD); 8 May, JP (HR); 23 Apr. (female), s. of Spfld (DB).

**Common Merganser**

MC: 150, LRen, 2 Mar. (JM); 138, Saganashkee Slough (Cook Co.), 18 Feb. (WS). LD: 31 Mar., McHenry Co. (DF). Others: 25 May (male), Joliet (JM)--possibly summering. Most left the state by mid-Mar.

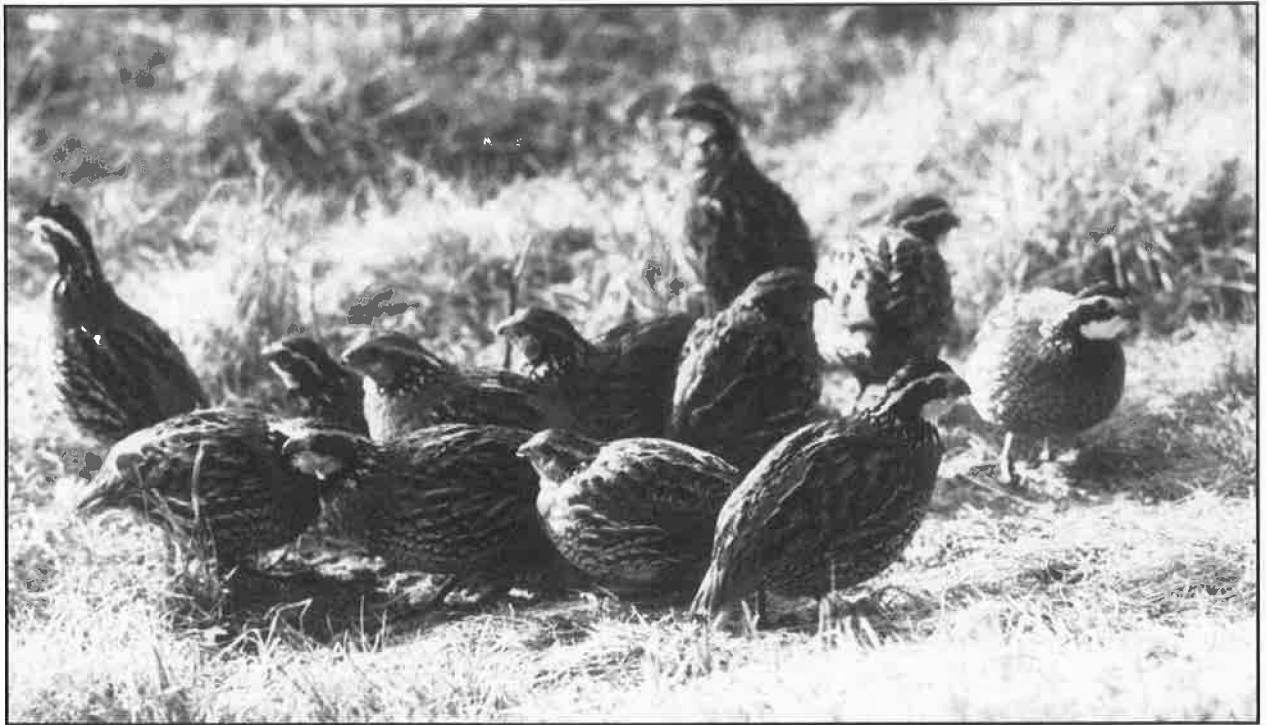
**Red-breasted Merganser**

EA: 20 Feb., Spfld (DB); 8 Mar. (4), LRen (JM). MC: 515, Evanston, 21 Apr. (EW); 482, LCal, 29 Mar. (WM); 133, Spfld, 28 Mar. (DB). LD: 31 May (female), Clin.L (MD); 25 May (male), Joliet (JM); 18 May (female), Spfld (DB).

**Ruddy Duck**

EA: 21 Feb., Spfld (DB); 28 Feb., Clin.L (RC); 3 Mar., MS (WS); 11 Mar. (4), LRen (JM). MC: 300, Carl.L, 28 Mar. (KM); 260, Spfld, 4 Apr. (DB); 73, MS, 9 May (RB). LD: 25 May (female), Buffalo (Sangamon Co.) (DB).





*Covey of Northern Bobwhites at Des Plaines Conservation Area (Will Co.), 27 March 1992. Photo by Joe B. Milosevich.*

**Turkey Vulture**

EA: 21 Feb., Spfld (DB); 28 Feb., Channahon (JM); 5 Mar., Winnebago Co. (JDo); 5 Mar., Penfield (Champaign Co.) (RC); 7 Mar., MS (SF). MC: 25, CONWR, 10 Apr. (KM); 13, Saganashkee Slough (Cook Co.), 4 Apr. (SF); Others: 11, Clin.L, 31 May (MD); 5, Spfld, 16 May (DB).

**Osprey**

EA: 11 Apr., Skokie Lagoons (Cook Co.) (JO); 11 Apr., MFWA (JS); 12 Apr., Fermi (RCo). MC: 5, CBG, 19 Apr. (LB). LD: 31 May, Sang.L (DB); 30 May, CBG (JHo).

**Mississippi Kite**

Others: 9 May, Seward Bluff F.P. (Winnebago Co.) (\*JDo); n.w. Pike Co on 25 May (JDo et al.).

**Bald Eagle**

EA: 20-28 Feb. (imm.), Saganashkee Slough (cook Co.) (WS, m.ob.); 20 Feb., Spfld (DB); 28 Feb., Winnebago Co. (JDo); 28 Feb. (ad.), Heidecke F.W.A. (Will Co.) (JM). LD: 9 May (1st-summer), LRSHNC (\*PD); 19 Apr. (imm.), L Decatur (MD); 16 Apr., n.w. Du Page Co. (fide RCo). Only one migrant adult reported this spring.

**Northern Harrier**

EA: 27 Feb. (2), Washington Co. (KM); 1 Mar., CBG (LB). MC: 5, CBG, 1 May (LB). LD: 9 May, JP (DA); 9 May (2), Du Page Co. (fide DY); 3 May, Penfield (Champaign Co.) (RC); 27 Apr. (female), Buffalo (Sangamon Co.) (DB); 15 Apr., Clinton Co. (KM). Others: 7 Apr., Evanston (EW).

**Sharp-shinned Hawk**

EA: 1 Mar., CBG (LB). MC: 52, CBG, 1 May (LB); 6, Spfld, 16 Apr. (DB). LD: 24 May, Urbana (RC); 9 May, Carl.L (KM).

**Cooper's Hawk**

EA: 15 Feb., Spfld (DB); 22 Feb., Penfield (Champaign Co.) (RC); 1 Mar., Camp Reinburg (Cook Co.) (DJ); 1 Mar., CBG (LB). MC: 13, CBG, 1 May (LB). LD: 9 May, Carl.L (KM).

**Northern Goshawk**

LD: 3 May (imm. that overwintered), JP (m.ob.); 19 Apr. (overwintered), Rockford (JDo); 5 Apr. (ad.), M.Arb (m.ob.). Others: 11 Mar. (imm.), Sangamon River (s. fork) (DB); 7 Mar., Urbana (RC).

**Red-shouldered Hawk**

EA: 31 Jan., Spfld (DB); 1 Mar., McClaughry Springs F.P. (WS). MC: 4, s. Clinton Co.(KM).

**Broad-winged Hawk**

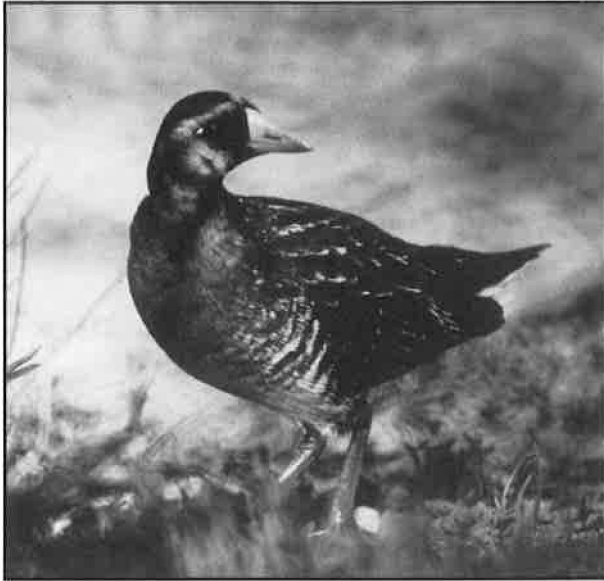
EA: 10 Apr., Jacksonville (VK, PWa); 10 Apr., Pomona (KM); 16 Apr. (2), Homer (JS); 16 Apr. (9), n.w. Spfld (DB); 18 Apr. (7), Palos F.P. (JL); 18 Apr. (5), Crest Hill (Will Co.) (JM). MC: 43, CBG, 1 May (LB); 20 +, Mendota (La Salle), 18 Apr. (JH); 8, Spfld, 18 Apr. (DB). LD: 24 May, Urbana (RC).

**Swainson's Hawk**

EA: 27 Apr. (3 ad.), n. Kane Co. (JM).

**Red-tailed Hawk**

EA: moving in late Feb. (m.ob.). MC: 20, s.w. Cook Co., 28 Mar. (EW); 15, CBG, 1 Mar. (LB); 12, Monroe Co., 25 Mar.



*Sora at Montrose Harbor, Chicago (Cook Co.), 2 May 1992. Photo by Kanae Hirabayashi.*

(KM). LD: 2 May, JP (HR). Others: {Krider's} 9 May, IBSP (JSO); {dark morphs} 7-17 Mar., Buffalo (Sangamon Co.) (DB); 13-27 Mar., DPCA (JM).

**Rough-legged Hawk**

EA: 1 Mar. (2), CBG (LB). LD: 25 Apr., n. of Somonauk (DSh); 22 Apr., Green Oaks (Lake Co.) (DJ); 15 Apr., Carl.L (KM). Few reports.

**American Kestrel**

MC: 8, Spfld, 7 Mar. (DB); 5 (migrants), CBG, 1 May (LB).

**Merlin**

EA: 28 Mar., Mansfield (Piatt Co) (RC); 1 Apr. (2), Wauk (JSO). LD: 9 May, Turtlehead L (Cook Co) (\*SF, WS); 2 May, s. of Spfld (DB). Others: 16 total reports from IL between 11-30 Apr.

**Peregrine Falcon**

LD: 17 May (ad.), Spfld (DB); 16 May, Danville (RC, EC, RW); 13 May, Johnson Co. (TF); 4 May, Pulaski Co. (TF et al.); 2 May, Rockford (DW). Others: 22 Feb.-25 Mar., Evanston (EW); 4-19 Apr. (pr.), LCal (WM); 15 Mar. & 21 Apr., JP (HR, JO)--the Chi area records may be from the release project.

**Prairie Falcon**

LD: 20 Mar. (1st yr.), UCCA (refuge drive) (\*TF, \*JD--photo); 2 Mar., Illiopolis (Sangamon Co.) (MD)--wintering bird.

**Northern Bobwhite**

MC: 25 (covey), DPCA, 27 Mar. (JM). First calling bird in Spfld was 28 Mar. (DB).

**Yellow Rail**

EA: 11 Apr., Danville (\*RC, RW -- see Seasonal Highlights); 19 Apr. (probably new bird), Danville (SB, RC). LD: 10 May, Chi (Powderhorn L) (JNo et al.); 3 May, Sang.L (DB).

**King Rail**

EA: 18 Apr., Jackson Co. (DR, TF); 21 Apr.- 3 May, CBG (m.ob.); 22 Apr., Lockport (Will Co.) (JM). LD: 12 May, Chi (North Pond) (RH et al.). Others: 9 May, IBSP (JSO).

**Virginia Rail**

EA: 18 Apr., JP (KHa, DA); 18 Apr., Penfield (Champaign Co.) (RC); 18 Apr., Sang.L (DB); 19 Apr., Chi (WS). MC: 12, IBSP, 9 May (JSO). LD: 9 May, Carl.L (KM). Others: 2 Apr., IBSP (JSO) - same as 1 Jan. bird?; 2, Chi (Montrose), 2 May (RH, EW). Low counts.

**Sora**

EA: 9 Apr. (2), SLSP (DB); 11 Apr., LCal (WM); 11 Apr. (4), Danville (RC, RW). MC: 14, IBSP, 9 May (JSO); 8, Jackson Co., 25 Apr. (TF, JD). LD: 27 May, SLSP (DB); 23 May, Jefferson Co. (TF, JD). Others: 5, Chi/JP, 2 May (RH, EW, KC); 9 May (in tree), Union Co. (VK et al). Low counts.

**Common Moorhen**

EA: 15 Apr., LCal (WM). MC: 8, LCal, 9 May (WM). LD: 2 June, Spfld (DB). Others: 29 Apr., Danville (RC); 2-3 May, Clin.L (De Witt) (MD); 27 May, Spfld (DB).

**American Coot**

EA: 21 Feb., Spfld (DB); 3 Mar., MS (WS); 5 Mar., Winnebago Co. (JDo). MC: 850, Eagle Park (Madison Co.), 8 Apr. (KM); 325, Spfld, 9 Apr. (DB); 200+, MS, 23 Mar. (WS). Others: 32, JP, 11 Apr. (HR). LD: 16 May (4), Sangamon Co. (DB); 13 May, JP (HR).

**Sandhill Crane**

EA: 28 Feb. (100), Des Plaines (Cook Co.) (DJh); 2 Mar. (40), Alsip (SF). MC: 600+, LRSHNC, 21 Mar. (RJo); 500+, Harvey, 28 Mar. (WS). LD: 31 May (2), Clin.L (MD)--over retention ponds; 9 May, Du Page Co. (fide DY).

**Black-bellied Plover**

EA: 7 May, Spfld (DB); 10 May, LCal (WS). MC: 15, Split Rock L (La Salle Co.), 25 May (JH). L.D.: 31 May, Spfld (DB). Others: 5, Wauk, 25 May (DD); 4, Rend L, 15 May (TF, JD).

**Lesser Golden-Plover**

EA: 15 Mar. (9), Rend L (TF); 18 Mar. (10), Spfld (DB). MC: 2600, Savoy (Champaign Co.), 25 Apr. (RC); 500+, Homer (Champaign Co.), 13 Apr. (JS). LD: 17 May (4), Pulaski Co. (TF, BD, JD); 10 May, Arcola (RC). Others: 26 Apr., West Chicago (MS)--only n.e. IL record this spring.

**Semipalmated Plover**

EA: 15 Apr., Spfld (DB); 15 Apr., Bond Co. (KM); 21 Apr., Vernon Hills (Lake Co.), (DJ); 27 Apr., West Chicago (JO). MC: 201, Rend L, 15 May (TF, JD); 180, Split Rock L (La Salle Co.), 18 May (JH); 65, Spfld, 15 May (DB); 31, Vernon Hills (Lake Co.), 18 May (DJ). LD: 6 June, Arcola (RC); 31 May, LCal (WM). Others: 16, Arcola, 13 May (RC); 15, M.Arb, 12 May (EW). Very high counts this spring.

**Piping Plover**

EA: 25-27 Apr., w. of Rockford (Winnebago Co.). For further details -- see Seasonal Highlights. (DW, m.ob.); 29 Apr., Wauk (JN); 3 May, Chi (12th St. Beach) (\*RE et al--photo). LD: 8 May, Chi (Montrose) (KH, m.ob.); 6 May, Wauk (fide RB).

**Killdeer**

EA: 2 Feb., Spfld (DB); 10 Feb., Heidecke F.W.A. (JM); 14 Feb., Joliet (JM); 15 Feb. (4), De Witt/Champaign Co. (RC); 22 Feb. (6), Palos (West School) (WS). MC: 40, Carl.L, 14 Mar. (KM).

**BLACK-NECKED STILT**

22 Apr. (female), North Chicago (Lake Co.--wetland project) (\*DJ). For further details -- see Seasonal Highlights).

**Greater Yellowlegs**

EA: 7 Mar., Champaign (RW); 8 Mar., Penfield (Champaign Co.) (RC); 24 Mar., n.w. Will Co. (JM); 10 Apr., M.Arb (RCO); 10 Apr. (2), LCal (JL). MC: 24, Spfld, 4 May (DB); 9, North Chicago (Lake Co.), 20 Apr. (DJ). LD: 20 May, Vernon Hills (Lake Co.) (DJ); 19 May, Spfld (DB); 16 May, Champaign (RC et al.).

**Lesser Yellowlegs**

EA: 4 Mar., University Park (Will Co.) (fide RB); 5-7 Mar., Champaign (RW, RC); 7 Mar. (2), UCCA (KM); 8 Mar., Spfld (DB); 24 Mar., Spfld (DB). MC: 120, Carl.L, 15 Apr. (KM); 60, Spfld, 4 May (DB). LD: 7 June (2), LCal (WM); 6 June, Arcola (RC).

**Solitary Sandpiper**

EA: 7 Apr., Union Co. (KM); 14 Apr., Champaign (RC); 14 Apr., Sang.L (DB); 19 Apr., CBG (LB). MC: 12, M.Arb, 3 May (fide EW); 12, Carl.L, 9 May (KM); 10, Homer, 24 Apr. (JS). LD: 31 May, s. of Spfld (DB).

**Willet**

EA: 21 Apr., Chi (RH); 26 Apr., Penfield (Champaign Co.) (RC). LD: 26-28 May, JP (JO); 17 May, Clin.L (MD). Others: 27 Apr., Harrisburg (JD). Scarce.

**Spotted Sandpiper**

EA: 12 Apr., Spfld (DB); 18 Apr., Penfield (Champaign Co.) (RC); 19 Apr., Naperville (DK); 19 Apr., Chi (JPu). MC: 15, Spfld, 7 May (DB); 14, Braidwood, 24 Apr. (JM). LD: 27 May, JP (HR); 22 May (2), Evanston (EW).

**Upland Sandpiper**

A: 14 Apr. (3), s.e. Saline Co. (JD); 16 Apr., LCal (DM); 17 Apr. (4), Decatur (MD). MC: 90, Joliet Arsenal, 4-6 May (BG et al.); 4, IBSP, 9 May (JSo). Others: 6 May (2), Buffalo (Sangamon Co.) (DB); 9-10 May, Glenview (EW, m.ob.).

**Whimbrel**

EA: 24 May (4), Wauk (RP, MD). MC: 15, IBSP, 31 May (BE); 6, Chi, 31 May (BA). Others: 27 May (3), Chi (RH).

**Hudsonian Godwit**

EA: 5 & 13 May (male), Spfld (DB). MC: 4, Rend L, 15 May (TF, JD). Others: 12 May, Dixon Mounds S.P. (Fulton Co.) (DB, VK).

**Marbled Godwit**

EA: 19 Apr. (4), Sang.L (fide DB). MC: 16, Spfld, 22 Apr. (DB).

**Ruddy Turnstone**

EA: 6 May, Wauk (DJ). MC: 30, Chi, 23 May (RH). LD: 30



*Red Knot at Montrose Harbor, Chicago (Cook Co.), 26 May 1992. Photo by Robert Hughes.*

May (3), Spfld (DB). Others: 24 May (5), Spfld (DB); 22 May (6), Evanston (EW); 21 May (6), Wauk (JSo); 18 May, Split Rock L (La Salle Co.) (JH); 17 May (2), Spfld (VK).

**Red Knot**

EA: 15 May (5), IBSP (fide EW). MC: 6, Chi, 25-26 May (RH, m.ob.). LD: 31 May, Chi (BA).

**Sanderling**

MC: 11, Arcola, 30-31 May (RC, RW); LD: 2 June, Spfld (DB); Others: 21 May (9), Wauk (JSo). 23 May (6), Decatur (MD); 30 May (6), Spfld (DB). Better numbers away from L Michigan.

**Semipalmated Sandpiper**

EA: 27 Apr., Spfld (DB); 29 Apr., LCal (DM). MC: 200, Rend L, 23 May (TF, JD); 120, Arcola, 25 May (RC et al.); 95, Spfld, 31 May (DB); 24, M.Arb, 11 May (EW). LD: 8 June, Spfld (DB); 6 June, Arcola (RC).

**Western Sandpiper**

EA: 16 Apr. (mostly winter plumage), Spfld (DB)--marks noted; 24 Apr. (new bird), Spfld (DB); 29 Apr.-2 May (2), Decatur (MD). LD: 6 June (3), Spfld (DB); 31 May, LCal (BA). Others: 23 May, Arcola (RC).

**Least Sandpiper**

EA: 8 Apr., Champaign (RW); 14 Apr. (5), Union Co (KM); 22 Apr. (2), North Chicago (Lake Co.) (DJ). MC: 150, Spfld, 5 May (DB); 30, LCal, 9 May (WM). LD: 8 June, Spfld (DB); 31 May, Arcola (MD).

**White-rumped Sandpiper**

EA: 23 Apr., West Chicago (MS, m.ob.); 11 May, CBG (JSt); 13 May, LCal (DM, JO). MC: 18, Spfld, 31 May (DB); 14, Rend L, 6 June (TF, JD). LD: 6 June, as above; 6 June (4), Arcola (RC); 2 June, Spfld (DB); 1 June (6), Rockford (DW).



*Ruff (Reeve), western DuPage County, 29 April 1992. 2nd county record. Photo by Joe B. Milosevich.*

Others: 15-17 May (2), LCal (WS, JO); 17 May, Pulaski Co (TF); 19 May (2), Split Rock L (La Salle Co.) (JH); 31 May (4), LCal area (BA).

**Baird's Sandpiper**

EA: 22-23 Apr, North Chicago (Lake Co.) (DJ, m.ob.). MC: 3, North Chicago (Lake Co.), 1 May (DJ). LD: 25 May (2), Arcola (MD); 16 May, Clin.L (MD). Good number of reports considering the species is less frequently recorded in spring..

**Pectoral Sandpiper**

EA: 5 Mar. (8), Penfield (Champaign Co.) (RC, EC); 6 Mar., Spfld (DB); 7 Mar. (2), Palos (West School) (RHe, WS et al.). MC: 500, Bismarck, 11 Apr. (RC, RW); 340, Spfld, 1 May (DB); 300, Carl.L, 9 May (KM); 70+, West Chicago, 26 Apr. (EW) . LD: 31 May (2), Spfld (DB).

**Dunlin**

EA: 18 Apr. (2), Pulaski Co. (TF, DR); 26 Apr. (2), West Chicago (EW, MS); 26 Apr., Penfield (Champaign Co.) (RC). MC: 80+, LCal, 31 May (BA); 28, Wauk, 21 May (JSo). LD: 31 May, as above; 31 May (2), Arcola (RW). Others: 7, M.Arb, 11 May (EW); 4, Spfld, 2 Ma (DB).

**Stilt Sandpiper**

EA: 18 Apr. (2), Pulaski Co (DR, TF); 26 Apr., LCal (CP); 29 Apr., Spfld (DB). LD: 12 May Sang.L (DB); 9 May, LCal (\*WM et al.). Only records.

**RUFF**

25-30 Apr., West Chicago (Reeve, 2nd Du Page Co. record, \*JP, MS, m.ob.).

**Short-billed Dowitcher**

EA: 1 May, CBG (LB); 1 May (2), Spfd (DB). MC: 31, Rend L, 15 May (TF); 21, Clin.L, 16 May (MD); 9, Spfld, 6 May (DB). LD: 25 May (3), Arcola (RC); 14 May (4), Sang.l. (DB).

Others: 16 May, Chi (EW, RH).

**Long-billed Dowitcher**

EA: 18 Apr., Pulaski Co. (TF, DR); 24 Apr. (3), Spfld (DB). MC: 35, Spfld, 2 May (DB). LD: 6 May (10), Spfld (DB).

**Common Snipe**

EA: 17 Feb., Spfld (DB); 6-7 Mar., Palos (West School) (WS); 7 Mar., Evanston (EW); 7 Mar., Champaign (RC, RW). MC: 100+, Arcola, 15 Apr. (RC); 50, Lockport (Will Co.), 22 Apr. (JM). LD: 16 May, Arcola (RC); 9 May (3), Du Page Co. (fide DY); 9 May, LRSNC (PD); 12 May (2) Beardstown (VK et al.)

**American Woodcock**

EA: 30 Jan., Ozark (TF); 20 Feb. (2 males), Urbana (RC); 2 Mar. (2 males), Tinley Park (WS). MC: 6, Evanston, 8 Mar. (EW et al.). LD: 7 May, JP (JRa); 2 May, Chi (\*\*EW).

**Wilson's Phalarope**

EA: 10 May (2 males), Spfld (DB); 16 May, LCal (DM). LD: 31 May (male), Spfld (DB); 25-31 May (3--2 females), Arcola (RC, MD, RW).

**Red-necked Phalarope**

LD: 7 June (female), Spfld (DB).

**Laughing Gull**

EA: 11 Apr., Sang.L (DB); 15 Apr., Spfld (DB)--had orange bill/black tip; 9-12 May, Wauk (RH, LB). LD: 6 June, Spfld (DB); 24-26 May (ad.), Chi (RH, m.ob.); 23 May (2nd yr.), Rend L (TF, JD); 19-26 May (ad.), Spfld (DB).

**Franklin's Gull**

{ad.} EA: 21 Mar., Sang.L (DB); 3 Apr., Spfld (DB). MC: 3, L Decatur, 9 Apr. (MD). LD: 23 Apr., Spfld (DB); 18 Apr., Wauk (DD); 18 Apr., Chi (WS, JPu). Others: 17 May (late 2nd yr. bird), Spfld (DB). {1st-summer's} EA: 10 May, JP (WM); 19 May, JP (DM). LD: 25 May, JP (HR); 19 May, Spfld (DB).

**Little Gull**

EA: 26 Apr. (2 ad.), Wauk (DD). LD: 25 May (1st-summer), Wauk (DD).

**Bonaparte's Gull**

EA: 19 Mar., Spfld (DB); 27 Mar. (1st-summer), Evanston (EW); 4 Apr. (2 ad. summer), Evanston (EW). MC: 1450, Evanston, 21 Apr. (EW); 1000, Wauk, 6 May (DJ); 700, CONWR, 7 Apr. (KM); 200, Clin.L, 12 Apr. (RC). LD: 1 June (1st-summer), Spfld (DB).

**MEW GULL**

30 Apr. (ad.), Sang.L (near dam) (*Sangamon and Christian Cos.*) See Seasonal Highlights (\*DB). 2nd IL spring record.

**Ring-billed Gull**

MC: 10,000+, LCal, 4 Apr. (WM); 2300, Carl.L, 22 Feb. (KM); 1800, Spfld, 3 Mar. (DB); 1745, JP, 18 May (HR).

**Herring Gull**

MC: 1500, LCal, 14 Mar. (WM). LD: 23 May (1st-summer), Clin.L (MD); 18 May (ad.), Spfld (DB). Lower numbers reported (outside LCal).

**Thayer's Gull**

LD: 9 May, IBSP (JSO); 22 Mar. (ad.), Chi (JO).

**Iceland Gull**

LD: 22 Mar. (ad.), Wauk (DD, JG); 12 Mar. (2nd-summer), JP (JO).

**Lesser Black-backed Gull**

EA: 13-14 Mar. (2nd-summer), LCal (DM, WM). LD: 14-15 May (2 ad.), Chi (Navy Pier/Montrose) (RH, KH). Others: thru 7 Apr. (wintering bird), Spfld (DB); 11 Apr. (1st-summer), Chi (AS).

**Glaucous Gull**

LD: 17 Apr. (1st-summer), Wauk (DD); 22 Mar. (1st-summer), Wauk (DD, JG); 19 Mar. (1st-summer), JP (JO).

**Great Black-backed Gull**

LD: 11 Apr. (1st-summer), Chi (Montrose) (AS); 22 Mar. (subad.), JP (JO); 19 Mar. (ad.), JP (JO).

**Caspian Tern**

EA: 3 Apr. (2), L Decatur (MD); 11 Apr. (3), Chi (JL). MC: 14, Spfld, 18 May (DB). LD: 10 June, Wilmette (EW); 30 May (3), Sangamon Co. (DB).

**Common Tern**

EA: 1 May, Chi (JL). MC: 145, Evanston, 12 May (EW); 37, Spfld, 27 May (DB). LD: 10 June, Wilmette (EW); 1 June, Spfld (DB). Others: 6 May, Spfld (DB)--earliest inland report; 8, Rock Cut S.P., 31 May (DW).

**Forster's Tern**

EA: 11 Apr. (2), Fermi (fide RCo); 11 Apr., Chi (AS); 11 Apr., Spfld (DB). MC: 33, Spfld, 28 Apr. (DB); 25, Evanston, 12 May (EW). LD: 31 May (6 1st-summer), Clin.L (MD); 31 May (2 1st-summer), Palos (West School) (WS); 17 May (4), Spfld (DB).

**Least Tern**

MC: 12, Grand Tower, 24 May (JDo et al.).

**Black Tern**

EA: 30 Apr., Sang.L (DB); 3 May (3), Riverdale (WM). MC: 19, Spfld, 3 May (DB). LD: 6 June, Arcola (RC); 31 May (3), Palos (West School) (WS).

**Mourning Dove**

MC: 50, Evanston, 9 May (EW); 30, Spfld, 9 Apr. (DB).

**Monk Parakeet**

MC: 43, JP, 7 Mar. (HR). Others: 10 Apr., Evanston (EW).

**Black-billed Cuckoo**

EA: 2 May, Wilmette (DM); 3 May, JP (JO). MC: 4, Chi, 12 May (EL); 3, Skokie Lagoons, 12 May (EW). Others: 21 May, JP (KC).

**Yellow-billed Cuckoo**

EA: 30 Apr., Pomona (KM); 2 May, JP (CP, JO). MC: 5, Spfld, 19-23 May (DB). Others: 20 May, JP (DA).



*Laughing Gull at North Avenue Beach, Chicago (Cook Co.), 26 May 1992. Photo by Robert Hughes.*

**Barn Owl**

5-7 May, s.e. Union Co. (TF et al.).

**Great Horned Owl**

Others: 7 Mar., JP (JRa); 25 Mar., Evanston (EW); 22 Apr., JP (KC).

**Snowy Owl**

EA: 8 Mar., Chi (Montrose) (JPu). LD: 8 Apr., Chi (O'Hare airport) (fide RB).

**Long-eared Owl**

EA: 11 Mar., Sang.L (DB); 14 Mar. (2), Homer L (Champaign Co.) (RC). LD: 13 Apr., Sang.L (DB); 6 Apr. (4), LCal (KS). Others: 15 Mar. (wintering bird), Jefferson Co. (TF, JD); 28 Mar. (3), s.w. Cook Co. (EW).

**Short-eared Owl**

EA: 6-8 Mar., Hoffman Estates (Cook Co.) (JMe); 8 Mar., Fermi (PK); 13 Mar., Rockford (JDo). LD: 2 May, Chi (DM); 25 Apr., n.e. Winnebago Co. (JDo). Others: 6 (wintering birds), Saline Co., 7 Mar. (TF, JD)--3 still present 8 Mar.; 28 Mar., s. of Somonauk (DSh).

**Northern Saw-whet Owl**

MC: 4, Allerton Park (Piatt Co.), 1 Apr. (RC)--overwintering birds. LD: 6 Apr., Allerton Park (RC). Others: 1 Mar., Eldon Hazlet S.P. (Clinton Co.) (KM).

**Common Nighthawk**

EA: 23 Apr. (2), C'dale (KM); 30 Apr. (2), Urbana (RC); 6 May, Orland Park (WS). MC: none over 10.

**Chuck-will's-widow**

EA: 18 Apr., Harrisburg (JD). Others: 16 May, MFWA (RW, RC, EC).

**Whip-poor-will**

EA: 6 Apr. (2), Harrisburg (JD); 9 Apr., Sang.L (DB); 22 Apr., Will/Grundy Co (JM); 23 Apr., Urbana (RC). MC: 8, IBSP, 9 May (JSO). LD: 23 May, Chi (McCormick Place) (WS, DM et al.); 14 May, JP (JO); 12 May, Spfld (DB).

**Chimney Swift**

EA: 6 Apr. (5), Union Co. (TF); 10 Apr. (2), Spfld (DB); 11 Apr., Bismarck (Vermilion Co.) (RW, RC); 17 Apr. (4), Midlothian (Cook Co.) (WS); 18 Apr., LCal (WM). MC: 3000, Joliet (one flock over river), 25 May (JM); 200 +, MS, 9 May (WS).

**Ruby-throated Hummingbird**

EA: 21 Apr., Pomona (KM); 2 May, Wilmette (DM); 6 May, Urbana (RC). MC: 4, Pomona, 28 Apr. (KM); 3, Spfld, 17 May (DB). LD: 28 May, JP (KC). Others: 16 May, Chi (EL).

**Belted Kingfisher**

EA: 21 Mar., JP (KC).

**Red-headed Woodpecker**

EA: 12 Apr. (increase in #'s), Spfld (DB); 30 Apr., JP (KC). LD: 21 May, JP (HR). Others: 4, JP, 9 May (HR).

**Red-bellied Woodpecker**

EA: 3 May, JP (HR). MC: 11, Spfld, 5 Apr. (DB); 9, LRSHNC, 9 May (PD). LD: 20 May, JP (KC).

**Yellow-bellied Sapsucker**

EA: 22 Mar. (male), Spfld (DB); 29 Mar., Evanston (fide EW); 29 Mar., KCP (RC, SB); 5 Apr., JP (KC). MC: 8, JP, 21 Apr. (HR); 7, Spfld, 14 Apr. (DB). LD: 16 May, Chi (EW). Others: 20 Apr., n.e. Pope Co (JD).

**Downy Woodpecker**

MC: 18, Spfld, 23 Apr. (DB); 12, Skokie Lagoons, 9 May (EW).

**Hairy Woodpecker**

MC: 6, Homer (Champaign Co.), 14 Apr. (JS); 6, Spfld, 23 Apr. (DB).

**Northern Flicker**

EA: 8 Mar., Evanston (fide EW); 20 Mar., JP (JO). MC: 31, Spfld, 14 Apr. (DB); 31, LRSHNC, 9 May (PD).

**Pileated Woodpecker**

MC: 19, Kaskaskia River, 25 Apr. (VK, TF); 5, Spfld, 23 Apr. (DB). Others: 17 Apr.-10 May, Homer (Champaign Co.) (JS).

**Olive-sided Flycatcher**

EA: 29 Apr., Sang.L (DB); 3 May, Chi's Rosehill Cemetery (EL); 3 May, JP (RHe, JO). LD: 15 June, Northfield (Cook Co.) (EW); 1 June, Braidwood (JM); 30 May, Spfld (DB); 23 May, Pomona (VK).

**Eastern Wood-Pewee**

EA: 21 Apr., Union Co. (KM); 2 May (2), JP (KC); 2 May, Lodge Park (Piatt Co.) (RC et al.). MC: 9, Spfld, 26 May (DB). LD: 5 June, Wilmette (EW).

**Yellow-bellied Flycatcher**

EA: 16 May, Urbana (RC, EC, RW); 17 May, Ryerson C.A.

(DJ). MC: 25+, Chi/JP, 23 May (WS, DM, JO et al.); 6, Urbana, 31 May (RC). LD: 8 June, Naperville (JP); 7 June (2), Urbana (RC); 3 June, Evanston (EW); 1 June, Spfld (DB).

**Acadian Flycatcher**

EA: 17 Apr., Pomona (KM); 25 Apr., White Heath (Piatt Co.) (RC); 11 May, JP (JO). MC: 12, Vermilion Co., 16 May (RC, RW, EC). LD: 8 June, Naperville (JP); 1 June (2), Spfld (DB); 27 May, JP (DA); 24 May, CBG (RB).

**Alder Flycatcher**

EA: 9 May, Spfld (DB); 16 May, JP (m.ob.); 16 May (3), Danville (RC, RW, EC). MC: 14 (calling), Wilmette/Evanston, 5 June (EW); 3, Rend L, 15 May (TF, JD). LD: 17 June, Evanston (EW); 14 June, Mahomet (Champaign Co.) (RC).

**Willow Flycatcher**

EA: 3 May, JP (JO); 9 May, throughout state. LD: 5 June (5), Wilmette (EW).

**Least Flycatcher**

EA: 21 Apr., JP (SF, JO); 24 Apr., Sang.L (DB); 25 Apr. (4), Piatt Co. (RC). MC: 12, Chi, 2 May (EW); 11, Spfld, 29 Apr. (DB); 10, Vermilion Co., 16 May (RC, EC, RW). LD: 30 May (2), Mahomet (RC); 27 May, Spfld (DB).

**Eastern Phoebe**

EA: 29 Feb. (2), Pomona (KM); 8 Mar., Urbana (RC); 9 Mar., JP (KC); 13 Mar. (2), McLaughry Springs F.P. (Cook Co.) (WS). MC: 14, Urbana, 5 Apr. (RC); 7, Spfld, 12 Apr. (DB); 6, JP, 6 Apr. (JO). LD: 30 Apr., JP (KC); 21 Apr., Evanston (EW).

**Great Crested Flycatcher**

EA: 14 Apr. (2), Jackson Co (KM); 19 Apr., Danville (RC, SB); 23 Apr. (3), Spfld (DB); 29 Apr. (2), Chi/JP (EL, DM). MC: 10, Spfld, 18 May (DB).

**Eastern Kingbird**

EA: 10 Apr., Ozark (TF); 19 Apr., MFWA (RC); 19 Apr., Spfld (DB); 21 Apr., JP (SF, JO); 22 Apr., Rockford area (JDo). MC: 21, Jackson Co., 21 Apr. (KM); 18, Spfld, 16 May (DB).

**Horned Lark**

MC: 40, Monroe Co., 25 Mar. (KM). Others: Only seven reported on the SBC for the three n.e. IL counties--becoming extirpated from this area.

**Purple Martin**

EA: 24 Mar. (3), w. of Spfld (DB); 25 Mar. (male flying s.), Evanston (EW); 7 Apr., throughout IL (m.ob.). MC: 55, n.w. Will Co., 9 May (JM).

**Tree Swallow**

EA: 7 Mar. (2), CONWR (KM); 8 Mar., MM (RCO); 8 Mar., Palos (fide RB). MC: 2000, CONWR, 21 Apr. (KM); 1000 +, Union Co., 21 Apr. (TF, JD); 500, Spfld, 25 Apr. (DB). LD: 9 May (130), LCal (WM); 21 Apr. (20), JP (HR).

**Northern Rough-winged Swallow**

EA: 30 Mar. (3), Johnson Co. (TF); 3 Apr., Spfld (DB); 8 Apr., MS (WS); 11 Apr., L Vermilion (RC, RW); 15 Apr., Evanston



*Whip-poor-will at Evanston Arts Center (Cook Co.), 25 April 1992. Photo by Eric Walters.*

(EW). MC: 75, Carl.L., 24 Apr. (KM); 40+, MS, 22 Apr. (WS); 20, Evanston, 9 May (EW); 13, Spfld, 22 Apr. (DB). LD: 22 May, Evanston (EW).

**Bank Swallow**

EA: 10 Apr. (2), Union Co. (KM); 11 Apr., Rockford (JDo); 11 Apr., Spfld (DB); 12 Apr., Clin.L (RC); 15 Apr., Evanston (EW). MC: 200, LCal, 9 May (WM); 150, Spfld, 14 May (DB); 150, HLCA, 22 Apr. (KM). LD: 28 May (8), Spfld (DB); 22 May (20), Evanston (EW).

**Cliff Swallow**

EA: 11 Apr., Spfld (DB); 22 Apr., Wauk (DJ); 22 Apr, MS (WS). MC: 200, Spfld, 14 May (DB). LD: 25 May (5), Joliet (JM); 9 May, s. Clinton Co. (KM).

**Barn Swallow**

EA: 18 Mar., Johnson Co. (TF); 25 Mar. (male flying s.), Evanston (EW); 29 Mar., Sang.L (DB); 4 Apr., Homer L (Champaign Co.) (RC, EC); 6 Apr., LCal (KS). MC: 110, Spfld, 24 Apr. (DB); 105, JP, 4 May (HR). LD: 22 May (25), Evanston (EW).

**Blue Jay**

EA: 14 Apr. (#'s increased), Spfld (DB); 16 Apr. (2), Evanston (EW); 21 Apr. (30+), n.e. IL (m.ob.). MC: 695+ (flying south), Chi/JP, 2 May (EW et al.); 41, Spfld, 22 Apr. (DB). Birds present during early Mar. probably wintered locally.

**BLACK-BILLED MAGPIE**

17 May, farmfield s.e. of Rock Cut S.P. (Winnebago Co.) (\*JV). See Seasonal Highlights for further details.

**American Crow**

MC: 50, JP, 24 Mar. (HR). Others: small flocks moving in

early Mar. in Evanston (EW); 23 Apr. (albino), Green Oaks (Lake Co) (LB).

**Fish Crow**

EA: 29 Feb. (7), UCCA (KM). MC: 30, UCCA, 7 Mar. (KM). Others: 25 Apr. (2), Kaskaskia River (VK, TF).

**Black-capped Chickadee**

EA: 5 Mar. (7), JP (HR). MC: 32, Skokie Lagoons, 9 May (EW); 17, Spfld, 16 Mar. (DB).

**Tufted Titmouse**

M.C.: 23, Spfld, 9 May (DB).

**Red-breasted Nuthatch**

EA: 17 Apr., Spfld (DB); 18 Apr., M.Arb (fide EW). LD: 12 May, JP (JO); 28 Apr., CONWR (KM); 27 Apr., Vermilion Co. (JS). Winter residents left by 1 Apr. in state (m.ob.).

**White-breasted Nuthatch**

MC: 11, LRSHNC, 9 May (PD).

**Brown Creeper**

EA: 25 Mar., Evanston (EW). MC: 15, Urbana, 12 Apr. (RC). LD: 9 May, Decatur (MD); 7 May, JP (HR).

**Carolina Wren**

MC: 10, s.w. Will Co., 9 May (JM); 9, Spfld, 7 Apr. & 9 May (DB). Others: all spring, Chi (Bird Sanctuary) (m.ob.); 23 Feb., JP (KC); 1 Mar., McClaughry Springs F.P. (Cook Co.) (WS); 1 Apr., JP (DP); 24 Apr., Wolf L (Cook Co.) (DM).

**Bewick's Wren**

EA: 29 Mar. (male), Spfld (DB); 3 Apr., near Berry (Sangamon Co.) (DB). LD: 23 Apr., s. of Spfld (DB).

**House Wren**

EA: 9 Apr., Spfld (DB); 11 Apr., Urbana (RC); 19 Apr., M.Arb (RCo); 19 Apr. (2), Chi (RH, JO, CP). MC: 24, LRSNHC, 9 May (PD).

**Winter Wren**

EA: 15 Mar., Rockford (JDo); 16 Mar., Urbana (RC); 18 Mar. (4), McClaughry Springs F.P. (Cook Co.) (WS). MC: 9, Urbana, 15 Apr. (RC); 6, MFWA, 11 Apr. (JS). LD: 10 May, JP (AA); 5 May, Urbana (RC).

**Sedge Wren**

EA: 24 & 29 Apr., Chi (McCormick Place) (DM); 25 Apr. (male), Sang.L (DB); 27 Apr. (4), Rockford (JDo). LD: 16 May, Chi (EW); 9 May, Harrisburg (JD); 9 May (male), s. of Spfld (DB). Others: 6 May, Urbana (RC).

**Marsh Wren**

EA: 9 Apr. (male), Sang.L (DB); 18 Apr., Penfield (Champaign Co.) (RC); 26 Apr., Chi (Rosehill Cemetery) (EL). MC: 8, LCal, 9 May (WM). LD: 23 May, Chi (WM); 16 May, SLSP (DB). Others: 15 Mar., MS (JHo et al.).

**Golden-crowned Kinglet**

EA: 13 Mar. (6), McClaughry Springs F.P. (Cook Co.) (WS); 14 Mar. (influx), Champaign Co. (RC). MC: 50, Urbana, 5 Apr. (RC); 44, M.Arb, 8 Apr. (fide EW). LD: 9 May, Chi (RB); 9 May, s.e. Cook Co. (fide EW); 9 May (female), Wauk (DJ, JSo); 26 Apr., Urbana (RC).

**Ruby-crowned Kinglet**

EA: 30 Mar., UCCA (JD); 31 Mar., Spfld (DB); 6 Apr., JP (JO). MC: 56, Spfld, 29 Apr. (DB); 50, Urbana, 15 Apr. (RC); 17, JP, 1 May (HR). LD: 14 May (2), n.w. Spfld (DB); 14 May (2), JP (HR); 9 May, Germantown (KM).

**Blue-gray Gnatcatcher**

EA: 1 Apr. (2), Pomona (KM); 11 Apr., JP (KHa); 11 Apr.,



*Loggerhead Shrike, northern Kane County, 27 April 1992. Photo by Joe B. Milosevich.*

Naperville (fide RCo); 11 Apr (8), Danville (RC, RW). MC: 46, Pomona, 23 Apr. (KM); 30, e.c. IL, 19 Apr. (RC, RW); 13, Skokie Lagoons, 9 May (EW). LD: 17 May, Spfld (DB); 12 May, JP (HR).

**Eastern Bluebird**

{1st wave} EA: 22 Feb. (2), Hoffman Estates (JMe); 1 Mar.(6+), M.Arb (RCo). MC: 15, UCCA, 27 Mar. (KM). LD: 14 Apr. (female), Evanston (EW).  
{2nd wave} EA: 10 May, JP (DM). LD: 16 May (2), Chi (EW); 14 May (7), Spfld (DB).

**Veery**

EA: 18 Apr., JP (DA); 22 Apr., Urbana (RC); 4 May, Ryerson C.A. (DJ). MC: 5, JP, 11-12 May (HR); 4, Spfld, 15 May (DB). LD: 31 May (2), Urbana (RC); 31 May, JP (HR).

**Gray-cheeked Thrush**

EA: 23 Apr., Spfld (DB); 23 Apr., Pomona (KM); 25 Apr., Centerville (Piatt Co.) (RC); 2 May, JP (CP, JO). MC: 8, JP, 13 May (HR); 7, Spfld, 15 May (DB). LD: 30 May, Mahomet (Champaign Co.) (RC); 28 May (2), JP (HR).

**Swainson's Thrush**

EA: 14 Apr. (2), Spfld (DB); 18 Apr., Urbana (RC); 19 Apr., M.Arb (RCo); 19 Apr. (2), Chi (JO, CP). MC: 50+, Ryerson C.A., 12 May (SD); 46, Spfld, 15 May (DB); 28, Skokie Lagoons, 12 May (EW). LD: 5 June, Union Co. (DR); 31 May, Urbana (RC).

**Hermit Thrush**

EA: 21 Mar., McClaughry Springs F.P. (Cook Co.) (WS, SF); 28 Mar., Urbana (RC); 6 Apr., throughout IL. MC: 50+, Chi/JP, 11 Apr. (WS); 18, Spfld, 13-15 Apr. (DB). LD: 16 May, Chi (EW); 12 May, Urbana (RC).

**Wood Thrush**

EA: 17 Apr., Rockford (JDo); 17 Apr., Union Co. (KM); 19 Apr., Danville (SB, RC); 20 Apr., LRen (JM). MC: 15, LRSNHC, 9 May (PD); 7, Mahomet (Champaign Co.), 9 May (RC). LD: 20 May, JP (DA).

**American Robin**

EA: 23 Feb. (3), JP (KC). MC: 1225 (flying s.), 7 Apr., Evanston (EW); 130, Spfld, 10 Mar. (DB).

**VARIED THRUSH**

6-8 Apr., Spfld (Adams Wildlife Sanctuary) (DB, VK), probably same as the 27 Dec. 1992 bird. See *Meadowlark Vol. 1 No. 3* for further details.

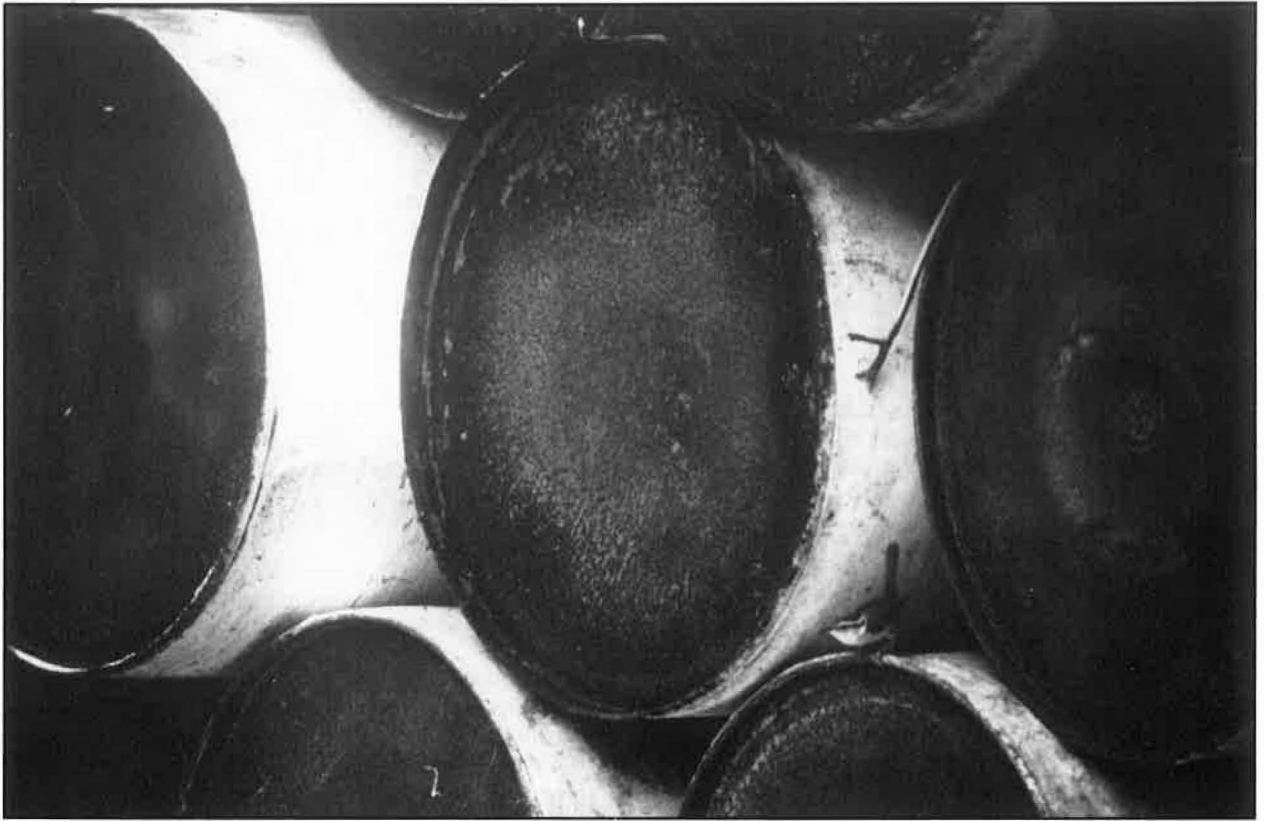
**Gray Catbird**

EA: 18 Apr., Union Co. & CONWR (TF & KM); 21 Apr. (2), SLSP/Spfld (DB); 25 Apr., JP (HR); 25 Apr., Centerville (Piatt Co.) (RC). MC: 30, Vermilion Co., 16 May (RC, EC, RW); 29, JP, 14 May (HR). Others: 18 Feb.-13 Mar., Chi (Rush Presbyterian St. Luke's Hospital) (EL).

**Northern Mockingbird**

EA: 6 Apr., Braidwood (JM); 7 Apr., West Chicago Prairie (RCo); 19 Apr., Chi (JB). LD: 25 May, Wauk (DD); 21 May, Chi (JL). Others: 10 Mar., Black Partridge Woods F.P. (fide RB); 23 Apr., JP (HR); 24 Apr., LCal (DM); 2 May, Durand





*Carolina Wren at Lincoln Park Bird Sanctuary, Chicago (Cook Co.). Bird was present throughout spring of 1992, evidence of this species' recent comeback in n. Illinois. Photo by Kanae Hirabayashi.*

(DW); 8 May (2), Chi (McCormick Place) (EW).

**Brown Thrasher**

EA: 7 Mar., Clin.L (RC); 7 Mar., Pomona (KM); 19 Mar. (male), Sang.L (DB); 8 Apr., Chi (DM, SF). MC: 65+, Chi, 19 Apr. (RH, JO, CP); 21, Spfld, 13 Apr. (DB). Others: 7 Mar., Clin.L (RC).

**American Pipit**

{1st wave} EA: 6 Mar., Spfld (DB); 7 Mar., Clin.L (RC); 7 Mar. (25), UCCA (KM). MC: 340, Pulaski Co, 13 Mar. (TF). {2nd wave} EA: 8 Apr. (150), Pulaski Co. (TF); 10 Apr. (22), Spfld (DB); 19 Apr. (2), CBG (LB). MC: 150, as above; 65, Penfield (Champaign Co.), 18 Apr. (RC); 22, as above. Others: 6, North Chicago (Lake Co.), 1 May (DJ); 5, JP, 1 May (JO). LD: 16 May, Chi (EW); 16 May (2), Arcola (RW, RC, EC); 30 Apr. (2), Jackson Co. (KM).

**SPRAGUE'S PIPIT**

18 Apr., Cypress Creek N.W.R. (Pulaski Co.). (TF\*, DR). For further details --- See Seasonal Highlights.

**Cedar Waxwing**

{1st wave} EA: 2 Feb. (50), O'Fallon (KM); 6 Feb., Spfld (DB). MC: 20, various dates. LD: 19 Mar. (20), Spfld (DB). Others: 40, Pomona, 7 Apr.(KM); 40, Spfld, 6 Apr. (DB)--in between waves.

{2nd wave} EA: 1 May (15), Spfld (DB); 1 May (12), Union

Co. (KM); 9 May (14), Cook Co. (fide EW). MC: 150, Spfld, 23 May (DB); 105 +, Wilmette/Evanston, 5 June (EW); 90, Chi, 16 May (EW). LD: 5 June, as above.

**Northern Shrike**

LD: 21 Mar., Hoffman Estates (Cook Co.) (JMe).

**Loggerhead Shrike**

EA: 21 Mar., Deland (De Witt Co.) (MD); 21 Mar., s. of Spfld (DB); 12 Apr., O'Brien Lock & Dam (SF, CA). Others: 21 Apr., n. of Sang.L (DB); 27 Apr. (2), n. Kane Co (JM).

**European Starling**

MC: 3500 (roost), LCal, 8 Mar. (WM).

**White-eyed Vireo**

EA: 10 Apr. (3), Pomona (KM); 14 Apr., Rockford (JD); 15 Apr., Urbana (RC); 19 Apr., Chi (WS, SF). MC: 3, Spfld, 7 May (DB). LD: 20 May (2), JP (JO).

**Bell's Vireo**

EA: 3 May, Spfld (DB); 17 May (male), Ryerson C.A. (Lake Co.) (\*LC et al.). MC: 7, Winnebago Co, 16 May (DW); 6, KCP, 16 May (RC, EC, RW); 4, Spfld, 9 May (DB). Others: 21-31 May+, LCal (JL, WM, m.ob.).

**Solitary Vireo**

EA: 24 Apr., Ozark (TF, JD); 26 Apr. (2), Urbana (RC et al.);

29 Apr., JP (DM, DA). MC: 5, Spfld, 3 May (DB); 3, JP, 9 May (HR). LD: 17 May, JP (KC); 16 May, Vermilion Co. (RC); 15 May, Rend L (TF, JD).

**Yellow-throated Vireo**

EA: 14 Apr.(2), Pomona (KM); 27 Apr., Spfld (DB); 1 May, Urbana (RC); 4 May, Ryerson C.A. (DJ). MC: 6, Kankakee River S.P. (Will Co.), 9 May (JM); 5, KCP, 16 May (RC et al.).

**Warbling Vireo**

EA: 10 Apr., UCCA (TF); 19 Apr., MFWA (SB, RC); 22 Apr., Spfld (DB); 29 Apr., JP (DM). MC: 14, LCal, 9 May (WM); 14, Skokie Lagoons, 9 May (EW); 13, Union Co., 30 Apr. (KM).

**Philadelphia Vireo**

EA: 1 May, Urbana (RC); 5 May, Spfld (DB). MC: 8, Urbana, 17 May (RC); 6, Decatur, 18 May (MD); 6, Spfld, 17 May (DB); 4, Chi/JP, 23 May (WS, DM et al.). LD: 27 May (2), Spfld (DB); 25 May, Mahomet (Champaign Co.) (RC); 23 May, Rend L (TF, JD).

**Red-eyed Vireo**

EA: 11 Apr., Bald Knob (Union Co.) (KM); 19 Apr., Chi (RH); 19 Apr., Spfld (DB). MC: 38, Spfld, 15 May (DB). LD: 5 June (3), Evanston (lakefront) (EW); 1 June (2), Spfld (DB).

**Blue-winged Warbler**

EA: 14 Apr. (3), Pomona (KM); 15 Apr. (2), Pope Co. (TF); 18 Apr., Sang.L (DB); 19 Apr., Danville (SB, RC); 1 May (3), Winnebago Co. (DW); 4 May, Ryerson C.A. (DJ). LD: 12 May (2), Skokie Lagoons (EW); 6 May, Sang.L (DB).

**Golden-winged Warbler**

EA: 19 Apr., M.Arb (RCo); 22 Apr., (female), Spfld (DB); 24 Apr., JP (DM). MC: 6, Champaign Co., 9 May (RC). LD: 12 May, Spfld (DB); 12 May, JP (JO); 10 May (2), Winnebago Co. (DW); 8 May, Germantown (KM).{Brewster's Warbler}: 4 reported between 20 Apr.-11 May (m.ob.).

**Tennessee Warbler**

EA: 17 Apr. (4), Union Co. (KM); 18 Apr., Harrisburg (JD); 19 Apr., Spfld (DB); 19 Apr., Decatur (MD); 4 May, Ryerson C.A. (DJ). MC: 150 +, Urbana, 12 May (RC); 48, Spfld, 15 May (DB); 18, Skokie Lagoons, 12 May (EW). LD: 26 May, Urbana (RC); 21 May, Riverton (DB).

**Orange-crowned Warbler**

EA: 15 Apr., Urbana (RC); 15 Apr., Spfld (DB); 19 Apr. (5), n.e. IL (four sites) (m.ob.). MC: 13, LaBagh Woods (Cook Co.), 9 May (DBr, MH). LD: 15 May, s. of Spfld (DB); 10 May, Urbana (RC et al.); 10 May (2), JP (KC). Others: 1 Apr., Rockford (JDo).

**Nashville Warbler**

EA: 14 Apr., Union Co (KM); 19 Apr., Maple Grove F.P. (AW); 19 Apr., Spfld (DB); 24 Apr., JP (DM). MC: 53, Skokie Lagoons, 9 May (EW); 29, Spfld, 4 May (DB). LD: 31 May, JP (HR); 15 May, Spfld (DB).

**Northern Parula**

EA: 7 Apr., Chi (JPu); 7 Apr. (4), Pomona (KM); 11 Apr., Danville (RC). MC: 28, w Clinton (Washington Co.), 19 May (TF); 13, Pomona, 17 Apr. (KM); 5, Spfld, 2 May (DB). LD: 17

May, JP (KC). Very few in n.e. IL.

**Yellow Warbler**

EA: 10 Apr., Union Co (TF); 18 Apr., Penfield (Champaign Co) (RC); 19 Apr. (3 sites), n.e. IL (m.ob.). MC: 30, LCal, 9 May (WM).

**Chestnut-sided Warbler**

EA: 1 May, Urbana (RC); 2 May, JP (KC). MC: 15, Skokie Lagoons, 12 May (EW); 12, Spfld, 15 May (DB); 10, Rend L, 15 May (TF, JD). LD: 31 May (2), Urbana (RC); 1 June, Spfld (DB); 3 June (female) Pontiac (Livingston Co.) (VK); 5 June (female), Wilmette (EW).

**Magnolia Warbler**

EA: 1 May, JP (HR); 1 May, Urbana (RC); 2 May, CBG (LB). MC: 16, Spfld, 15 May (DB); 14, Skokie Lagoons, 12 May (EW). LD: 5 June (female), Wilmette (EW); 1 June, Spfld (DB); 31 May, Urbana (RC).

**Cape May Warbler**

EA: 7 May (2), JP (DM); 8 May, Urbana (RC). MC: 4, Rend L, 15 May (TF, JD); 4 (females), Spfld, 17 May (DB). LD: 20 May, JP (DA); 18 May, Spfld (DB).

**Black-throated Blue Warbler**

EA: 26 Apr. (male), Urbana (RC); 8 May, JP (WS). MC: 4, JP/Chi, 12 May (DM, RH). LD: 20 May (2), JP (HR); 18 May, near Mendota (La Salle Co.) (JH); 15 May, Spfld (DB).

**Yellow-rumped Warbler**

EA: 1 Apr., Urbana (RC); 6 Apr. (4), Spfld (DB); 7 Apr. (3), JP (KC). MC: 130, CONWR, 18 Apr. (KM); 100, Urbana, 12 Apr. (RC); 70, JP, 7 31 May (2), Urbana (RC) May (HR). LD: 5 June (male), Evanston (EW); 19 May, Urbana (RC). Others: 13-15 Mar., McClaughry Springs F. P. (Cook Co.) (WS, m.ob.).

**Black-throated Green Warbler**

EA: 29 Mar., Ozark (TF); 11 Apr., CONWR (KM); 12 Apr., Spfld (DB); 25 Apr., Urbana (RC); 26 Apr., McClaughry Springs F.P. (JL). MC: 30, Ryerson C.A., 4 May (DJ); 14, Skokie Lagoons, 12 May (EW); 9, Spfld, 29 Apr. (DB). LD: 1 June, Spfld (DB); 26 May, Urbana (RC).

**Blackburnian Warbler**

EA: 18 Apr., Union Co (TF); 29 Apr., Chi (EL); 29 Apr., Sang.L (DB); 30 Apr., Urbana (RC). MC: 18, Ryerson C.A., 4 May (DJ); 11, Skokie Lagoons, 12 May (EW). LD: 15 June (singing male), Trail of Tears (1 June, Spfld (DB); 31 May, Urbana (RC).

**Yellow-throated Warbler**

EA: 6 Apr., Jackson Co. (TF); 11 Apr. (3), Danville (RC, RW); 14 Apr., Spfld (DB); 21 Apr., Severson Dells F.P. (Winnebago Co.) (JDo). MC: 18, w Clinton (Washington Co.) 19 May (TF); 3, Winnebago Co. (DW). LD: 9 May, Somme Woods (Cook Co.) (\*TKr); 9 May, JP (\*DA). Others: 2 May, JP (m.ob.); 6 May, North Riverside (Cook Co.) (fide RB).

**Pine Warbler**

EA: 29 Feb. (4), Pomona (KM); 3 Mar. (3), Pope Co. (TF); 31 Mar., Rockford (JDo); 6 Apr., Allerton Park (Piatt Co.) (RC); 15 Apr., Urbana (RC); 16 Apr., Shabbona Woods F.P. (Cook

Co.) (SF). MC: 4+, CBG, 29 Apr. (RB, LB); 4, Chi, 19 Apr. (WS et al.). LD: 10 May, JP (WM). Others: 8 Mar., JP (KC).

#### **Prairie Warbler**

EA: 10 Apr., Johnson Co. (TF); 22 Apr., Spfld (DB); 25 Apr., Arcola (RC); 1-2 May, JP (HR, EL et al.); 1 May, Urbana (RC); 2 May, CBG (m.ob.). LD: 28 May, Chi (Lincoln Park) (RH); 19 May, n.w. Spfld (DB). Others: 2 May, Urbana (RC); 2 May, Lodge Park (Champaign Co.) (RC); 9 May, JP (HR).

#### **Palm Warbler**

EA: 15 Apr., Pope Co. & Carl.L (TF & KM); 16 Apr., JP (JO); 19 Apr., throughout IL (m.ob.). MC: 40, JP, 3 May (HR); 40, Ryerson C.A., 4 May (DJ). LD: 30 May, Burnham Prairie (WM); 25 May, Chi (m.ob.). {Yellow Palm Warbler}: 10-11 May, s.w. Spfld (DB--notes taken).

#### **Bay-breasted Warbler**

EA: 1 May, Chi (SL); 6 May, Urbana (RC). MC: 12, Spfld, 13 May (DB); 10, Urbana, 10 May (RC et al.); 9, Skokie Lagoons, 12 May (EW); 8, Rend L, 15 May (TF, JD). LD: 31 May, IBSP (JHo); 27 May (female), Spfld (DB); 24 May, Urbana (RC).

#### **Blackpoll Warbler**

EA: 21 Apr., Union Co. (KM); 21 Apr. (4), Alexander Co. (TF, JD); 1 May, McHenry Dam (fide RB); 1 May, Channahon (JM); 1 May, Urbana (RC). MC: 12, Spfld, 15 May (DB); 10, Urbana, 24 May (RC); 6, Skokie Lagoons, 12 May (EW). LD: 31 May (2), Urbana (RC); 28 May (male), Spfld (DB).

#### **Cerulean Warbler**

EA: 11 Apr., Pomona (KM); 19 Apr., Decatur & Danville (MD & SB, RC); 1 May, JP (JO). MC: 14, w Clinton (Washington Co.), 19 May (TF); 12, Pomona, 28 Apr. (KM); 4, COLSP, 9 May (JSa). LD: 14 May, JP (DM). Others: 12 May (2), Skokie Lagoons (EW); 12 May, LaBaugh Woods (Cook Co) (EL); 9 May (2), Kankakee River S.P. (JM).

#### **Black-and-white Warbler**

EA: 7 Apr. Spfld (DB); 10 Apr., Union Co. & Pope Co. (KM & JD); 25 Apr., Chi (Egger's Woods) (WM); 25 Apr., Urbana (RC). MC: 10, n.e. Pope Co. (JD). LD: 7 June (female), Mahomet (Champaign Co.) (RC)--since 30 May; 27 May (female), Spfld (DB); 27 May, JP (DA).

#### **American Redstart**

EA: 16 Apr., Union Co. (TF); 1 May, JP (HR, JO); 2 May, throughout IL (m.ob.). MC: 255, Kaskaskia River, 19 May (TF, VK); 181, Kaskaskia River, 25 Apr. (TF, VK); 16, JP, 14 & 15 May (HR); 9, Spfld, 17 May (DB). LD: 7 June (since 31 May), Urbana (RC); 5 June (2--1 male), Wilmette (EW).

#### **Prothonotary Warbler**

EA: 11 Apr. (5), Union Co (KM); 16 Apr., w. of Spfld (DB); 25 Apr., Vermilion Co. (JS); 1 May, JP (JO)--but 2 on 2 May there. MC: 31, Kaskaskia River, 25 Apr. (TF, VK). LD: 21 May (1st female arrived), Spfld (DB); 13 May, CBG (RB, LB); 12 May, JP (HR, DM).

#### **Worm-eating Warbler**

EA: 15 Apr., Urbana (RC); 16 Apr. (3), Union Co. (TF); 19 Apr., Decatur (MD); 4 May, n. Cook Co (fide RB). LD: 16

May, Downers Grove (RCo); 5 May, Spfld (DB). Others: 23, 25 & 29 Apr., Spfld (DB); 9 May, Chi (Lincoln Park Zoo) (\*JPo, KH).

#### **Ovenbird**

EA: 14 Apr., Pope Co. (TF); 15 Apr., Spfld (DB); 21 Apr., JP (JO); 21 Apr., Channahon (JM). MC: 8, Chi, 2 May (EW); 8, Spfld, 15 May (DB). LD: 1 June, Spfld (DB); 28 May, JP (HR); 25 May, Mahomet (Champaign Co.) (RC).

#### **Northern Waterthrush**

EA: 16 Apr., Spfld (DB); 18 Apr. (2), JP (DA); 19 Apr., Naperville (DK). MC: 22, Lodge Park (Piatt Co.), 2 May (RC); 16, Skokie Lagoons, 9 May (EW). LD: 31 May (singing), Urbana (RC); 22 May (2), JP (HR).

#### **Louisiana Waterthrush**

EA: 27 Mar., Pomona (KM); 29 Mar., Sang.L (DB); 7 Apr., McClaughry Springs F.P. (WS); 7 Apr. (2), Castle Rock S.P. (Ogle Co.) (fide RB); 8 Apr. (2), Urbana (RC). LD: 17 May, Spfld (DB); 9 May (2), Champaign Co. (RC et al.); 9 May (2), Cook Co. (fide EW). Many n. IL observations.

#### **Kentucky Warbler**

EA: 7 Apr., Castle Rock S.P. (Ogle Co.) (fide RB); 17 Apr. (4), Pomona (KM); 19 Apr., JP (KH); 25 Apr., Urbana (RC). MC: 12, Pomona, 28 Apr. (KM). LD: 19 May (2), Spfld (DB); 12 May, Des Plaines (BE); 12 May, Downers Grove (DT); 10 May, Urbana (RC et al.). Others: Ryerson C.A. (2), 9 May (DJ). Only 7 reports from n.e. IL (very low).

#### **Connecticut Warbler**

EA: 9 May (3), Cook Co. (\*m.ob.); 9 May (3), Du Page Co. (\*m.ob.). MC: 6, Chi/JP, 17 May (DM, RH et al.); 2, Urbana, 12 May (RC); 2, Vermilion Co, 17 May (JS). LD: 5 June, Wilmette (EW); 29 May, Ryerson C.A. (DJ); 25 May, Urbana (RC). Others: 17 May, Decatur (MD).

#### **Mourning Warbler**

EA: 2 May (2), Chi/JP (RH, ASi, JO, CP); 5 May, Rock Cut S.P. (DW); 6 May, Wauk (Bowen Park) (DJ, et al.). MC: 6, Chi, 23 May (WS, JO); 5, Spfld, 26 May (DB). LD: 5 June (male), Wilmette (EW); 3 June, Chi (m.ob.); 1 June, Spfld (DB).

#### **Common Yellowthroat**

EA: 10 Apr., Pomona (KM); 17 Apr., Spfld (DB); 19 Apr. (6), four sites in IL (m.ob.). MC: 28, Union Co, 1 May (KM); 27, LRSHNC, 9 May (PD).

#### **Hooded Warbler**

EA: 16 Apr. (male), Chi (Roger's Park) (JB); 16 Apr. (2), Union Co (TF); 18 Apr., MS (AS, JSa); 18 Apr., JP (KH). LD: 5 June (male), Evanston (EW); 22 May (female), Chi (RH). 9+ recorded from Piatt & Champaign Co's between 24 Apr.-2 May (RC, MD, m.ob.); 4 recorded from Sangamon Co. between 18 Apr.-16 May (DB).

#### **Wilson's Warbler**

EA: 22 Apr., Rockford (JDo); 25 Apr., M.Arb (fide EW). MC: 9, Rend L, 15 May (TF, JD); 7, JP, 12 May (HR); 7, Spfld, 13 May (DB). LD: 8 June (male), Spfld (DB); 31 (3), Urbana (RC); 31 May, JP (KC).

#### Canada Warbler

EA: 24 Apr., near Spfld (DB); 3 May, JP (RH, ASi, HR). MC: 8, Skokie Lagoons, 12 May (EW); 3, Rend L, 15 May (TF, JD). LD: 1 June, Spfld (DB); 31 May, Urbana (RC); 29 May, Ryerson C.A. (DJ). Others: 12 May, Urbana (RC).

#### Yellow-breasted Chat

EA: 18 Apr. (2), Union Co (KM); 29 Apr., Spfld (DB); 9 May (8), Du Page/Cook Co (fide EW). MC: 6, Chi/JP, 12 May (RH et al.). LD: 16 May, JP (KC).

#### Summer Tanager

EA: 16 Apr., Johnson Co. (TF); 22 Apr., Spfld (DB); 23 Apr., Urbana (RC); 3 May, Downers Grove (AW); 4 May, Sweet Woods (Cook Co. (fide RB). MC: 2, Spfld, 12 May (DB). LD: 16 May, Spfld (DB); 14 May (male), Axehead L (Cook Co. (AS). Others: 9-12 May (1st yr. male), Wauk (Bowen Park) (DJ, JSo, LB); 9 May (male), Ottawa Trail Woods (Cook Co.) (\*CF et al.); 11 May, Chi (fide RB).

#### Scarlet Tanager

EA: 14 Apr. (2), Pomona (KM); 29 Apr., w. of Spfld (DB); 30 Apr., Urbana (RC); 9 May, throughout IL. MC: 14, Urbana, 10 May (RC et al.); 8, Palos area, 14 May (WS); 8, Union Co, 17 Apr. (KM). LD: 20 May, JP (DA). Scarce in n. IL.

#### WESTERN Tanager

16 Apr. (male), Hinsdale (Du Page Co.) (\*SR et al.--photo). For further details-- see Seasonal Highlights. 16 Apr. (male), Westchester (Cook Co.) (WJe et al.--photos); 18 Apr., SRSP (Illinois Canyon) (\*JH). The first two records were in suburban backyards.

#### Northern Cardinal

MC: 43, Evanston, 9 May (EW); 42, CONWR, 11 Apr. (KM).

#### Rose-breasted Grosbeak

EA: 20 Apr., Spfld (DB); 25 Apr. (2--1 male), Centerville (Piatt Co.) (RC); 1 May (3), JP (HR). MC: 12, Spfld, 4 May (DB); 9, LRSHNC, 9 May (PD). LD: 29 May, Johnson Co (TF); 25 May, JP (DA).

#### Blue Grosbeak

EA: 17 Apr., Johnson Co. (TF); 9 May, Moraine Hills S.P. (RGe); 9 May (male), w. Will Co. (JM). LD: 17 May (ad. male), Ryerson C.A. (\*LC, \*DJ).

#### Indigo Bunting

EA: 8 Apr. (at feeder), Harrisburg (JD); 16 Apr., Union Co. (TF); 21 Apr., MFWA (JS); 23 Apr., Sangamon Co. (DB); 4 May, JP (HR). MC: 37, Spfld, 15 May (DB); 37, Union Co., 30 Apr. (KM). LD: 28 May, JP (HR). Others: 19 Mar. (thru mid April), Spfld (Adams Sanctuary, at feeder) (DB, m.ob.).

#### Dickcissel

EA: 1 May, Sang.L (DB); 1 May (2), CONWR (KM); 2 May, Lodge Park (Piatt Co) (RC et al.); 12 May, Chi (RH). MC: 30, Champaign Co, 25 May (RC); 11, Spfld, 14 May (DB). LD: 1 June, Spfld (DB). Others: 21 Mar., Evanston (feeder) (RD).

#### Rufous-sided Towhee

EA: 23 Feb. (2), Lodge Park (Piatt Co) (RC); 3 Mar., Sang.L (DB); 7 Mar. (2), JP (JRa). MC: 15, CONWR, 11 Apr. (KM);



*Harris' Sparrow at Argonne National Laboratory (Du-Page Co.), 29 April 1992. Photo by Ivars Ambats.*

12, Spfld, 4 May (DB); 9, LRSHNC, 9 May (PD). LD: 20 May, JP (HR); 16 May (female), Chi (EW); 6 May, Spfld (DB). {Spotted Towhee}: 25 Apr., Spfld (Oak Ridge) (DB); 8 May, Chi (Montrose) (RH).

#### American Tree Sparrow

EA: 1 Mar. (4), Evanston (EW). MC: 50, DPCA, 16 Mar. (JM). LD: 29 Apr., CBG (RB, LB); 11 Apr. (2), Urbana (RC).

#### Chipping Sparrow

EA: 18 Mar., Johnson Co. (TF); 31 Mar. (2), Mt. Hope cemetery (Cook Co.) (VS); 5 Apr., Chi (JPu). MC: 100, Vermilion/Champaign Co., 19 Apr. (RC, RW); 40, CBG, 3 May (DJ). LD: 13 May, JP (KC). Others: 3 Mar., Harrisburg (at feeder) (JD); 5 Mar. (2), JP (KC).

#### Clay-colored Sparrow

EA: 27 Apr., Rockford (JDo); 29 Apr. (2), Chi (TS); 29 Apr., Urbana (RC). MC: 5, Chi, 2 May (RH, AW et al.); 5, Chi, 9 May (RB et al.). LD: 27 May, Greene Valley F.P. (RCo). Others: 9 May, Carl.L (KM). At least 17 reported from Chi.

#### Field Sparrow

EA: 6 Mar., O'Fallon (KM); 7 Mar., Clin.L (RC); 7 Mar. (2), s. of Spfld (DB); 15 Mar., Mt. Hope Cemetery (Cook Co.) (VS); 26 Mar. (+), n.e. IL (m.ob.). MC: 25, Urbana, 11 Apr. (RC); 25, Spfld, 4 May (DB); 21, LRSHNC, 9 May (PD). LD: 18 May, JP (HR).

#### Vesper Sparrow

EA: 28 Mar., Buffalo (Sangamon Co.) (DB); 29 Mar., Bismarck (Vermilion Co.) (RC); 5 Apr., JP (JO); 6 Apr., LCal (KS); 6 Apr. (2), Braidwood (JM). MC: 18, Mahomet (Champaign Co.), 9 May (RC et al.). LD: 25 Apr., Chi's Egger's Woods (WM). Others: 8 Mar., Jackson Co. (TF, JD).

#### Lark Sparrow

EA: 18 Apr. (2), Champaign Co. (RC); 24 Apr., Chi (DM); 24 Apr., Braidwood (JM). MC: 5, Spfld, 19 May (DB). Others: 2 May, Chi (JO, CP); 2 May, Winnebago Co. (DW).

**Savannah Sparrow**

EA: 28 Mar. (10 +), De Witt/Champaign Co.(RC); 6 Apr. (2), Evanston (EW); 6 Apr., LCal (KS). MC: 129, Pulaski Co, 18 Apr. (TF, DR). LD: 22 May (2), Evanston (EW); 18 May, SLSP (DB). Second movement noted again by m.ob. in n.e. IL during middle of May. Others: 29 Feb., Spfld (DB).

**Grasshopper Sparrow**

EA: 16 Apr., s. of Spfld (DB); 17 Apr. (2), Pulaski Co (TF); 18 Apr., Chi (DM); 19 Apr., MFWA (RC, SB). MC: 12, near Perks (Pulaski Co.), 20 Apr. (JD); 10, IBSP, 9 May (JSO). LD: 17 May, Ryerson C.A. (DJ); 16 May, Chi (EW). Others: 5, Chi, 2 May (JO, CP)

**Henslow's Sparrow**

EA: 18 Apr. (2), Union Co. (TF); 19 Apr. (2), Chi (WS, AS). MC: 3, e. Union Co, 9 May (SB). LD: 22 May, Chi (RH); 19 May, n.w. Spfld (DB); 10 May (2-3), Harrisburg (JD). Others: 10 May, Arcola (RC)

**Le Conte's Sparrow**

EA: 3 Mar. (2), Sang.L (DB); 7 Mar., Urbana (RC); 5 Apr., n.w. Winnebago Co. (LJo); 19 Apr. (2), Chi (WS, JO, CP). MC: 6, Spfld, 9 Apr. (DB); 2, Chi, 29 Apr. (DM, EL). LD: 11 May, Chi (RH); 3 May, Sang.L (DB). Others: 3 May, IBSP (JSO). Nine reports from Chi.

**Sharp-tailed Sparrow**

EA: 16 May (2), Chi (EW, m.ob.). MC: 2, as above; 2, Chi, 22 May (RH). LD: 3 June, Chi (RH).

**Fox Sparrow**

EA: 22 Feb. (8), Champaign Co. (RC); 24 Feb., Spfld (DB); 2 Mar., Fermi (RCO); 5 Mar. (4), JP (HR). MC: 100, Urbana, 1 Apr. (RC); 75 +, Chi/JP, 11 Apr. (WS). LD: 9 May, Cook Co. (fide EW).

**Song Sparrow**

EA: 22 Feb., Spfld (DB); 1 Mar., Evanston (EW). MC: 80, JP, 6 Apr. (JO); 38, Union Co., 1 Apr. (KM).

**Lincoln's Sparrow**

EA: 14 Apr., Spfld (DB); 24 Apr., s. Clinton Co. (KM); 26 Apr., Urbana (RC); 29 Apr., CBG (RB, LB). MC: 8, Spfld, 4 May (DB); 7, Chi, 2 May (EW). LD: 5 June, Spfld (DB); 31 May, JP (KC).

**Swamp Sparrow**

EA: 3 Mar. (5), Sang.L (DB); 5 Mar. (2), JP (KC); 15 Mar., Mt. Hope cemetery (Cook Co.) (VS). MC: 100 +, Chi, 19 Apr. (JO, CP); 42, Spfld, 17 Apr. (DB). LD: 20 May (2), JP (DA); 12 May (3), Sang.L (DB); 9 May (2), Carl.L (KM).

**White-throated Sparrow**

EA: 31 Mar. (12), Spfld (DB); 8 Apr., JP (DA). MC: 300 +, Chi, 29 Apr. (DM); 100 (one flock), Braidwood, 24 Apr. (JM); 73, Spfld, 25 Apr. (DB). LD: 28 May, JP (KC); 26 May (2), Spfld (DB).

**White-crowned Sparrow**

EA: 19 Apr., Chi (WS et al.). MC: 75, CBG, 3 May (DJ); 45, Chi, 8 May (EW); 42, Spfld, 4 May (DB). LD: 22 May, Evanston (EW); 21 May, Cook Co. (fide EW); 15 May (2), s.

of Spfld (DB); 9 May, Carl.L (KM). Others: 15 Mar., Mt. Hope Cemetery (Cook Co.) (VS).

**Harris' Sparrow**

EA: 28 Apr.-4 May, Argonne National Lab (Du Page Co.) (\*AKn, IA--photos); 2-4 May, CBG (m.ob.). LD: 5-7 May, Hanover Park (Du Page Co.) (BBx, AS, RCo--video).

**Dark-eyed Junco**

EA: 4 Mar. (4), JP (KC). MC: 200, Urbana, 11 Apr. (RC); 63, Spfld, 4 Apr. (DB). LD: 9 May (3), Cook/Du Page Co. (\*m.ob.); 29 Apr., Urbana (RC); 28 Apr., Harrisburg (feeder) (JD). (Oregon): 19 Apr., JP (HR).

**Lapland Longspur**

MC: 300, Spfld, 14 Mar. (DB). LD: 9 May (male in breeding plumage), Pulaski Co (near Cypress Creek) (\*BLi); 9 May (45 +), Winnebago Co (DW); 2 May, Chi (McCormick Place) (DM). Others: 6, Evanston, 8 Apr. (EW).

**Smith's Longspur**

EA: 7 Mar. (33), Clin.L (MD). MC: 35, Spfld, 14 Apr. (DB); 33, as above. LD: 21 Apr., Berry (DB); 8 Apr. (3), Pulaski Co (TF, JD); 8 Apr. (20), s.e. of Spfld (DB, VK).

**Snow Bunting**

LD: 4 Mar. (perched in tree), Evanston (EW); 26 Feb. (5), Rockford (JDo).

**Bobolink**

EA: 17 Apr., Pulaski Co (TF); 21 Apr. (male), Orland Hills (Cook Co) (WS); 23 Apr. (4--2 females), s. of Spfld (DB); 27 Apr., n. Kane Co. (JM). MC: 34, Spfld, 14 May (DB); 18, n. of Somonauk, 8 May (DSH). LD: 17 May, JP (KC); 8 May (4), Carl.L (KM).

**Red-winged Blackbird**

EA: 1 Feb., notable increase in e.c. IL (RC); 20 Feb. (100), Palos area (WS). MC: 15,000 (roost), Spfld, 16 Mar. (DB); 7500 (roost), LCal, 8 Mar. (WM). LD: numbers decreased notably in Spfld 7 May (DB).

**Eastern Meadowlark**

EA: 28 Feb. (8), e. Grundy Co. (JM). MC: 22, Spfld, 28 Mar. (DB); 16, Chi, 8 Mar. (DM). Others: 20 Jan., Spfld (DB).

**Western Meadowlark**

EA: 1 Mar., Evanston (EW). LD: 3 May, LCal (DM); 23 Apr., Decatur (MD). Others: 1 Feb., Spfld (DB); 24 Mar., s.w. Spfld (DB); 28 Mar., Clin.L (RC); 3 Apr., Buckhart (Sangamon Co.) (DB); 17 Apr., Spfld (DB) .

**Yellow-headed Blackbird**

EA: 29 Mar. (male), LCal (WM); 31 Mar. (pr.), e. of Harrisburg (JD)-stayed for two weeks; 19 Apr., MM (RCO). MC: 6, LCal, 9 May (WM). LD: 22 May (female), Evanston (EW). Others: 26 Apr., Sang.L (DB); 3 May, Penfield (Champaign Co.) (RC); 7 May, Spfld (DB). Low numbers.

**Rusty Blackbird**

EA: 2 Feb., Spfld (DB); 22 Feb., Evanston (JPO); 22 Feb. (6), Champaign Co (RC); 29 Feb. (12), Palatine (Cook Co) (DJ). MC: 75, Crest Hill (Will Co), 16 Mar. (JM). LD: 3 May (2),

IBSP (JSo); 18 Apr., w. of Spfld (DB).

**Brewer's Blackbird**

EA: 5 Mar. (male), Penfield (Champaign Co.) (RC); 15 Mar. (pr.), Clin.L (RC, MD et al.).{second wave} EA: 7 Apr. (3--1 female), Homer (Champaign Co.) (JS). MC: 20 (3 females), near Sang.L, 16 Apr. (DB); 12, Spfld, 12 Apr. (DB); 5, Rockford, 21 Apr. (JDo). Others: 21 Apr. (2), M.Arb (RCo, CPo).

**Common Grackle**

EA: 16 Feb. (10), Urbana (RC, EC); 22 Feb., JP (KC). MC: 10,000, Spfd, 2 & 24 Mar. (DB); 3750 (roost), LCal, 8 Mar (WM); 1100 (flying s.), Evanston, 7 Apr. (EW). LD: numbers decrease 7 April in Spfld (DB).

**Brown-headed Cowbird**

EA: 23 Feb. (50), Monticello (Piatt Co.) (RC); 2 Mar. (5), JP (KC). MC: 5000 (roost), Spfld, 24 Mar. (DB); 3500 (roost), LCal, 8 Mar. (WM); 260 (flying s.), Evanston, 7 Apr. (EW).

**Orchard Oriole**

EA: 14 Apr., Saline Co. (TF, JD); 18 Apr., s. of Spfld (DB); 24 Apr. (2), Wolf L (Cook Co.) (DM). MC: 7, M.Arb, 2 May (DDo); 7, Braidwood, 9 May (JM). LD: 31 May, JP (KC).

**Northern Oriole**

EA: 16 Apr., Union Co. (TF); 19 Apr., MFWA (SB, RC); 20 Apr., w. of Spfld (DB); 29 Apr. (2), JP (DM, KC). MC: 30, Skokie Lagoons, 9 May (EW); 26, LRSHNC, 9 May (PD); 25, Urbana, 10 May (RC et al.).

**Purple Finch**

EA: 12 Apr., Spfld (DB); 13 Apr. (5--4 females), Somonauk (DSh); 17 Apr., Homer (JS); 20 Apr., JP (JO). MC: 38, Homer, 27 Apr. (JS); 20, Centerville (Piatt Co.), 25 Apr. (RC et al.). LD: 13 May, Homer (JS); 4 May, JP (JO); 30 Apr., Jackson Co. (KM). Others: 1 Mar., McClaughry Springs F.P. (WS).

**House Finch**

EA: 2 Mar., McHenry Co. (DF). Numbers did not appear to rise, but still spreading in habitat--now being observed on woodland edges in Spfld (DB).

**Red Crossbill**

EA: 26 Feb. - LD: 3 Mar., Rockford (JDo).

**WHITE-WINGED CROSSBILL**

8 Mar., IBSP (RWa). A great record for a non-flight year.

**Common Redpoll**

EA: 23-24 Feb., Burr Ridge (Du Page Co.) (KRo). MC: 4 (3 females), CBG, 28 Mar. (DJ). LD: 13-19 Apr., LCal (WS, JO, m.ob.); 6 Apr., CBG (AS); 1 Apr., Allerton Park (Piatt Co.) (RC). Others: 22 Mar., Evanston (JPo); 8 Mar., Rockford (JDo).

**Pine Siskin**

MC: 22, Harrisburg (at feeder), 7 May (JD); 22, Spfld, 3 Mar. (DB). LD: 22 May, Chi (RH). Low numbers.

**American Goldfinch**

MC: 100, CONWR, 11 Apr. (KM); 91, Spfld, 25 Apr. (DB); 44, JP, 25 Apr. (HR). Movement recorded in Spfld from 16 Apr.-5 May (DB).

**Evening Grosbeak**

LD: 7 Mar., Rockford (JDo).

**Eurasian Tree Sparrow**

MC: 14, Spfld, 1 Mar. (DB). Others: 21 Mar. (2), Table Grove (KM).

**EXOTICS**

**Ringed Turtle-Dove**

2 Mar., Decatur (MD).

---

Finally, many thanks to all contributors who sent in field notes for this compilation. Contributors are requested to use the following schedule when submitting their notes to the appropriate Seasonal Editor:

---

SEASON	DATE REPORTS DUE TO SEASONAL EDITOR
--------	-------------------------------------

---

WINTER SEASON 1 Dec. - 29 Feb.	7 March
SPRING MIGRATION 1 March - 31 May	7 June
BREEDING SEASON 1 June - 31 July	7 August
FALL MIGRATION 1 Aug. - 30 Nov.	7 December

---

**SEASONAL EDITORS:**

WINTER SEASON -	Robert Danley 2201 Clay Street Murphysboro, IL 62966
SPRING MIGRATION -	Eric Walters 720 Reba Place Evanston, IL 60202
BREEDING SEASON -	Vernon Kleen Natural Heritage Division Department of Conservation 524 South 2nd Street Springfield, IL 62701
FALL MIGRATION -	Robert Chapel 306 1/2 West California Urbana, IL 61801

# INDEX - VOLUME 1

*Note: This index includes the names of all bird species mentioned in articles in Volume 1, with the exception of the Field Notes and Spring Bird Count articles. In these articles, bird species are listed in taxonomic order and can therefore be easily accessed by referring to the proper season.*

*Issue numbers (1-4) are listed in parentheses, followed by page numbers.*

- Avocet, American, (1) 17-19.
- Barg, S., Birds Across the Shore: An essay on fall migration along Lake Michigan, (2) 13.
- Baum, M.J., Statewide 1992 Spring Bird Count, (4) 125.
- Bittern, American, (2) 11.  
Least, (1) 6,8,10,13; (2) 11.
- Blackbird, Red-winged, (1) 16; (2) 14; (3) 100.  
Rusty, (3) 105.  
Yellow-headed, (1) 10,11,13; (2) 11; (3) 105.
- Bobolink, (4) 139.
- Bunting, Snow, (3) 118.
- Buckhardt, N., Autumn Melodies: Why Some Birds Sing in Fall, (2) 14.
- Bufflehead, (2) 13.
- Cardinal, Northern, (1) 15.
- Chapel, R., Bird Finding Guide: Saw-whet Owls in Allerton Park, (3) 96.
- Chapel, R., Field Notes: 1991 Fall Migration, (2) 23.
- Chickadee, Black-capped, (1) 15,16.
- Condor, California, (2) 13.
- Coot, American, (2) 13.
- Cowbird, Brown-headed, (3) 105.
- Crane, Sandhill, (1) 19; (2) 13.
- Creeper, Brown, (2) 11.
- Crossbill, Red (1) 7,24; (3) 98.  
White-winged, (3) 98.
- Curlew, Eskimo, (1) 17.  
Long-billed, (1) 17.
- Danley, R.F., Field Notes: 1991-92 Winter Season, (3) 106.
- De Neal, J., & Fink, T., Bird Finding Guide: Rend Lake - Shorebirds, Southern Style, (1) 17.
- De Neal, J., Owl Lore, (3) 91.
- De Vore, S., Owl Prowl, (3) 88.
- De Vore, S., State First: Red-breasted Merganser Breeds for the First Time In Illinois, (1) 13.
- De Vore, S., Winter Survival: How birds adapt to the coldest season, (3) 118.
- Dove, Mourning, (1) 16; (2) 17; (3) 99.
- Duck, American Black, (2) 13; (3) 93.  
Labrador, (2) 17.  
Ring-necked, (2) 13.
- Dunlin, (1) 18; (2) 20.
- Eagle, Bald, (1) 16, 19; (2) 5.  
Golden, (1) 19; (2) 4; (4) 138,139.
- Egret, Cattle, (1) 22.  
Great, (1) 11,22; (2) 11.
- Falcon, Peregrine, (1) 19; (2) 3-7,13; (4) 124.
- Finch, House, (1) 16; (2) 17; (3) 100; (4) 135.  
Purple, (3) 99.
- Fink, T., & De Neal, J., Bird Finding Guide: Rend Lake - Shorebirds, Southern Style, (1) 17.
- Flycatcher, Acadian, (4) 134.
- Friederici, P., Avian Atlas: Breeding Study Provides Insights, Valuable Data, (1) 4.
- Friederici, P., Bird Finding Guide, (2) 5.
- Friederici, P., Hawk Watch, (2) 2.
- Frischia, S., Feeder Station, (1) 15.
- Frischia, S., Feeder Station: Building Your Own Feeder Sound System, (2) 16.
- Frischia, S., Feeder Station: Diary of a Mini-Blind Peeper, (3) 99.
- Frischia, S., Feeder Station: How you can participate in the spring feeder count, (4) 135.
- Godwit, Hudsonian, (1) 17,19.  
Marbled, (1) 19.
- Goose, Canada, (3) 100; (4) 122.  
Greater White-fronted, (1) 19.  
Ross', (1) 19; (2) 20.  
Snow, (3) 102.
- Goshawk, Northern, (2) 4,5,7,17.
- Grackle, Common, (1) 16; (3) 105.
- Grebe, Pied-billed, (1) 11,13; (2) 11.
- Grosbeak, Blue, (1) 7; (4) 135.  
Evening, (3) 98.  
Rose-breasted, (1) 6,7; (4) 135.
- Gull, Bonaparte's, (2) 22.  
California, (3) 103.
- Franklin's, (2) 21; (3) 102; (4) 138.
- Glaucous, (3) 93,103.
- Great Black-backed, (3) 93, 102-104.
- Herring, (3) 102,103.
- Iceland, (3) 102,103.
- Ivory, (3) 92-96.
- Lesser Black-backed, (2) 21; (3) 102-104.
- Mew, (3) 103; (4) 138.
- Ring-billed, (2) 20,21; (3) 93,102,103; (4) 138.
- Sabine's, (2) 22.
- Slaty-backed, (3) 103.
- Thayer's, (2) 21; (3) 93, 103.
- Western, (3), 104.
- Harrier, Northern, (1) 7; (2) 6,11,13.
- Hawk, Broad-winged, (2) 2,3,5-7.  
Cooper's, (1) 5; (2) 4,7,11; (4) 134.  
Red-shouldered, (2) 7,13; (3) 98.  
Red-tailed, (1) 8; (2) 5-7,13; (3) 104; (4) 122,124.  
Rough-legged, (2) 7,13.  
Sharp-shinned, (2) 2,4-7,13.
- Hawk-Owl, Northern, (3) 85.
- Hawk Silhouettes, (2) 7.
- Heron, Great Blue, (1) 16,22.
- Hickman, Dr. S., The Des Plaines River Wetlands Demonstration Project: Improving Habitat for Nesting Birds, (1) 9.
- Hickman, Dr. S., The Des Plaines River Wetlands Demonstration Project: Improving Habitat Quality for Migrating Waterfowl, (2) 8.
- Hutchcraft, C., Bird Lady of Woodstock: Rehabilitator gives quality care to injured birds, (4) 122.
- Ibis, White-faced, (4) 137.
- Jaeger, Pomarine, (2) 20.
- Jay, Blue, (1) 16; (4) 124.
- Johnson, D.B., Field Identification: Recognizing Juvenile and Winter Chipping Sparrows, (1) 20.
- Johnson, D.B., Field Identification:

- Recognizing Juvenile and Winter Clay-colored Sparrows, (2) 18.  
 Johnson, D.B., Field Identification: Test Your Skills - Is it a Chipping or a Clay-colored Sparrow?, (3) 101.  
 Johnson, D.B., Snowy Owl Invasion: Illinois birders witness second largest flight in state's history, (3) 82.  
 Junco, Dark-eyed, (1) 20.
- Kestrel, American, (2) 5,7.  
 Kingbird, Eastern, (1) 8,24.  
 Kinglet, Golden-crowned, (1) 7.  
   Ruby-crowned, (4) 135.  
 Kite, Mississippi, (1) 16.  
 Kittiwake, Black-legged, (3) 102.  
 Kleen, V.M., Field Notes: 1991 Breeding Season, (1) 25.  
 Knot, Red, (1) 18,19.
- Longspur, Smith's, (4) 139,140.  
 Loon, Common, (2) 13,20; (4) 136.  
   Pacific, (2) 20.
- Maggie, Black-billed, (4) 138,139.  
 Mallard, (1) 23; (2) 10,13; (4) 124.  
 Martin, Purple, (2), 15.  
 Meadowlark, Eastern, (1) 7,24.  
   Western, (1) 7, 24.  
 Merganser, Red-breasted, (1) 13,14; (4) 136.  
 Merlin, (2) 2, 5-7, 13; (3) 102.
- Night-Heron, Black-crowned, (1) 11,13,22; (2) 11.  
 Nuthatch, White-breasted, (4) 124.
- Oldsquaw, (3) 102.  
 Oriole, Northern, (2) 14.  
 Osprey, (1) 19; (2) 2,6,13.  
 Owl, Barred, (3) 89,90,91,98; (4) 134.  
   Burrowing, (4) 140.  
   Eagle, (3) 92.  
   Great Gray, (3) 85.  
   Great Horned, (1) 5,22; (3) 89,90,98.  
   Long-eared, (3) 89,90,91.  
   Northern Saw-whet, (3) 96-98.  
   Short-eared, (3) 89,90.  
   Snowy, (3) 82-87,89,93.
- Palmer, R., Lister's Corner, (3) 119.  
 Pelican, American White, (1) 19; (4) 127.  
 Phalarope, Red, (1) 19.  
   Red-necked, (1) 17-19.  
   Wilson's, (1) 16.  
 Phoebe, Eastern, (4) 134.  
 Pintail, Northern, (2) 13.  
 Pipit, American, (4) 139,140.  
   Sprague's, (4) 139,140.
- Plover, Lesser Golden, (1) 18.  
   Piping, (1) 17-19; (4) 137.  
   Snowy, (1) 17.  
   Wilson's, (1) 17.
- Rail, King, (1) 10; (4) 125.  
   Virginia, (1) 10.  
   Yellow, (1) 10; (4) 137,140.  
 Redhead, (1) 23.  
 Robin, American, (1) 16; (3) 104.  
 Ruff, (1) 17.
- Sanderling, (1) 18,19.  
 Sandpiper, Baird's, (1) 19; (4) 138.  
   Buff-breasted, (1) 17-19.  
   Curlew, (1) 17.  
   Least, (1) 18.  
   Pectoral, (1) 18,19.  
   Purple, (1) 17,18.  
   Sharp-tailed, (1) 17.  
   Solitary, (1) 18.  
   Spotted, (1) 18.  
   Upland, (1) 7; (4) 139,140.  
   Western, (1) 19; (2) 20.  
 Sapsucker, Yellow-bellied, (4) 124.  
 Scoter, Black, (3) 102.  
   Surf, (3) 102.  
   White-winged, (3) 102.  
 Screech-Owl, Eastern, (3) 88-90, 97.  
 Seasonal Highlights, (1) 22.  
 Seasonal Highlights, (2) 20.  
 Seasonal Highlights, (3) 102.  
 Seasonal Highlights, (4) 136.  
 Shoveler, Northern, (1) 23.  
 Siskin, Pine, (3) 98.  
 Sora, (1) 10.  
 Sparrow, American Tree, (3) 105.  
   Bachman's, (4) 140.  
   Brewer's, (1) 20.  
   Cassin's, (4) 140.  
   Chipping, (1) 20,21; (2) 18; (3) 101,104,105,120.  
   Clay-colored, (1) 20,21; (2) 18,19; (3) 101,120.  
   Field, (2) 18; (3) 105.  
   Fox, (2) 14; (3) 100.  
   Grasshopper, (1) 7.  
   Henslow's, (1) 5,8.  
   House, (1) 16; (3) 100.  
   Pine Woods, (4) 140.  
   Savannah, (1) 7; (4) 139.  
   Song, (2) 14.  
   White-crowned, (2) 18; (3) 100.  
   White-throated, (2) 18; (3) 105,118.
- Spoonbill, Roseate, (2) 17.  
 Starling, European, (3) 100.  
 Stilt, Black-necked, (1) 17; (4) 136,138.  
 Stokie, A., Christmas Day Surprise, (3) 93.  
 Swallow, Bank, (2) 15.  
   Barn, (2) 15.
- Cliff, (2) 15.  
 Northern Rough-winged, (2) 15.  
 Tree, (1) 16; (2) 15.  
 Violet-green, (2) 15.  
 Swan, Tundra, (2) 20.
- Tanager, Scarlet, (4) 134,135.  
   Summer, (4) 134,135.  
   Western, (4) 140.  
 Teal, Blue-winged, (2) 10,13.  
   Green-winged, (2) 10.  
 Tern, Black, (1) 24; (2) 11.  
   Caspian, (4) 140.  
   Forster's, (1) 23,24; (2) 11.  
 Thrush, Varied, (3) 104.  
   Wood, (2) 14.  
 Towhee, Green-tailed, (4) 140.  
 Turnstone, Ruddy, (1) 18,19.  
 Turtle-Dove, Ringed, (2) 17.
- Veery, (2) 11.  
 Vireo, Red-eyed, (2) 22; (4) 134.  
   Warbling, (1) 6,8.  
   Yellow-throated, (4) 134.  
 Vulture, Turkey, (2) 5,13; (4) 138,139.
- Walters, E., A Violet-green Swallow Visits Northeastern Illinois, (2) 15.  
 Walters, E., Avian Annals, (1) 16.  
 Walters, E., Avian Annals, (2) 17.  
 Walters, E., Avian Annals, (3) 100.  
 Walters, E., Avian Annals, (4) 140.  
 Walters, E., Field Notes: 1992 Spring Migration, (4) 141.  
 Walters, E., Winter Ivory Gull: Third State Record, (3) 95.  
 Warbler, Bay-breasted, (4) 124.  
   Cerulean, (4) 134.  
   Kentucky, (4) 134.  
   Tennessee, (2) 22.  
   Worm-eating, (1) 20.  
   Yellow-rumped, (4) 135.  
   Yellow-throated, (4) 132-134.  
 Waxwing, Bohemian, (2) 17,22.  
   Cedar, (2) 22.  
 Whimbrel, (1) 19.  
 Whip-poor-will, (4) 134.  
 Whistling-Duck, Fulvous, (1) 19.  
 Willet, (1) 17.  
 Williams, D., Bird Finding Guide: Yellow-throated Warbler Nests in Winnebago County, (4) 132.  
 Woodpecker, Lewis', (4) 140.  
   Pileated, (3) 98; (4) 134.  
   Red-bellied, (4) 135.  
   White-headed, (2) 17.  
 Wood-Pewee, Eastern, (2) 14.  
 Wren, House, (2) 14.
- Yellowlegs, Greater, (1) 18.  
 Lesser, (1) 18.  
 Yellowthroat, Common, (1) 6.



## SUBMISSION INFORMATION

\* We welcome manuscripts, photographs, and illustrations for possible publication in *Meadowlark*.

\* Article topics include unusual bird sightings and nesting accounts, technical papers on bird research, and other articles such as bird finding guides and field identification tips. Joy of birding articles will also be considered.

\* Manuscripts should be typewritten or computer-generated, double spaced and on only one side of numbered pages. Two copies of your manuscript would be appreciated.

\* If you are able, submit a computer disc formatted for ascii or word perfect 5.1.

\* Include name, address, and day and night time phone numbers. Other pertinent information about your qualifications, background is also helpful.

\* For photographs, we prefer clear black and white or color prints. Color slides may also be acceptable.

\* We reserve the right to review and edit articles according to style, grammar, accuracy, and readability.

\* Send articles, photographs, and inquiries to: Sheryl De Vore, Chief Editor, 967 Braeburn Road, Mundelein, IL 60060.

\* Pen and ink drawings are also accepted. Contact Walter Marcisz at (708) 385-8967.

## SUBSCRIPTION INFORMATION

*Members of the Illinois Ornithological Society receive Meadowlark, the quarterly journal, plus Wings Over The Prairie, the IOS newsletter. Members are also invited to special field trips, the annual meeting, and other IOS functions.*

*To join or send a gift subscription, send your name or that of the gift recipient, address, and telephone number along with fee to: IOS, PO Box 1971, Evanston, IL 60204-1971.*

*Fees: Full-time student \$10; Individual \$20; Family \$30; Contributor \$50; Supporter \$100; Sponsor \$500; Library/Institution \$30.*

---

## **Waiting for Yellow-heads**

**Guttural, raucous**

**Short short long buzzy on end**

**The red-winged blackbird sings atop ice-tinged cattails.**

**A song**

**Almost**

**It is not time -**

**Yet for a moment he sounds like a yellow-head**

**Like the voice of a loved one who has died.**

**- Sheryl De Vore**

---